

Indochinese Culture 5 cents Postal Card

A single postal card was issued in 1931 as part of the Indochinese Culture series. The card differed from previous issues in that the lettering was executed in black yielding a more modern appearance.



Indochinese Culture Use of 5 cents Postal Card

An additional 10 cents worth of postage affixed to this postal card paid the surface rate to the United States shortly before the attack on Pearl Harbor.



POSTAL MARKINGS
HUE ANNAM 25-10 41

Indochinese Culture 5 cents Envelope

Two envelopes imprinted with the Angkor Thom ruins design were issued in 1932. The 5-cent envelope met the need for letters internal to Indochina.



Indochinese Culture
Preprinted 5 cents Envelope

The printed information suggests that this envelope was prepared for use in returning ballots for the 1936 election at the Saigon Sports Club.



Indochinese Culture Use of 5 cents Envelope

The 5-cent envelope was issued to meet the needs for internal mailings. Here the envelope went from sender to addressee, both in the city of Cantho.



POSTAL MARKINGS
CAN-THO COCHINCHINE 5-8 33

Indochinese Culture
Use of 5 cents Envelope

Sent to Tokyo, this 5-cent envelope bears the rural postmark of the town where it originated. With an additional 10 cents postage affixed on the reverse, the mailing escaped being cited for postage due.



POSTAL MARKINGS

PHONG-Y PROVINCE DE THANH HOA
THANH HOA ANNAM 31-1 35

REVERSE

PHONG-Y PROVINCE DE THANH HOA
SAIGON-CENTRAL COCHINCHINE 5 FEV 35
VICTORIA HONG KONG 14 FE 35

Indochinese Culture
Use of 5 cents Envelope

A 1-cent stamp was added to this envelope to make the 6 cents postage required for letters to France.



POSTAL MARKINGS
TOURANE ANNAM 6-133

Indochinese Culture
Use of 5 cents Envelope

Besides France proper, the 6-cent French Community rate applied to all French possessions. Here a 1-cent Monoplane Airmail was added to a 5-cent Indochinese Culture envelope to pay the surface rate to New Caledonia.



POSTAL MARKINGS

NINH-BINH TONKIN 22-11 37

REVERSE

HAI-PHONG TONKIN 22-11 37

NOUMEA NOUVELLE-CALEDONIE 27-17 38

Indochinese Culture
Use of 5 cents Envelope

Effective 1 April 1938, the foreign rate letter had risen to 18 cents. Apparently, a 1-cent stamp had fallen off this envelope to the United States. Initially marked as postage due, the due indication was subsequently crossed out no doubt because the effort to collect the underpayment would have not been worth the postage due amount.



POSTAL MARKINGS

HUE ANNAM 3-5 38

T in triangle marked out with blue crayon

REVERSE

HAI-PHONG TONKIN 5-93 8

Indochinese Culture Use of 5-cent Envelope

With an additional 1-cent stamp on the reverse, the postage for a registered letter to New Caledonia in 1935 was calculated as follows:

French colony letter rate	6 cents
<u>registration fee</u>	<u>15 cents</u>
total	21 cents



POSTAL MARKINGS

GIA HOA POSTE RURALE PROVINCE DE SONTAY
SON-TAY TONKIN 8-1 35
registration label

REVERSE

SON-TAY TONKIN 8-1 35
HANOI R.P. TONKIN 8-1 35
NOUMEA NELLE CALEDONIE 12 FEVR 35

Indochinese Culture Attempted Use of 5 cents Envelope

To prevent reuse, postal regulations strictly prohibited attaching the indicium of postal stationery on mail. Here the sender affixed the carefully trimmed indicium from a 5-cent envelope on an internal mailing. After spotting the attempted use of the indicium, an alert postal clerk highlighted it with red crayon. The letter was cited for 10 cents postage due – twice the internal letter rate.



POSTAL MARKINGS
HONGAY TONKIN 26-3 34
plain "T"
CAMPHA-MINE TONKIN 27-3 34
REVERSE
CAMPHA-MINE TONKIN 26-3 34

Indochinese Culture

Postmarks on 5-cent Envelope Cut-Outs



BENTHUY
ANNAM



BAI-THUONG
ANNAM



CUA-TUNG
ANNAM



KOMPONGCHAM
CAMBODGE



NHATRANG
ANNAM



TOURANE
ANNAM



SLOGAN



PHONG-Y
PROVINCE DE THANH HOA

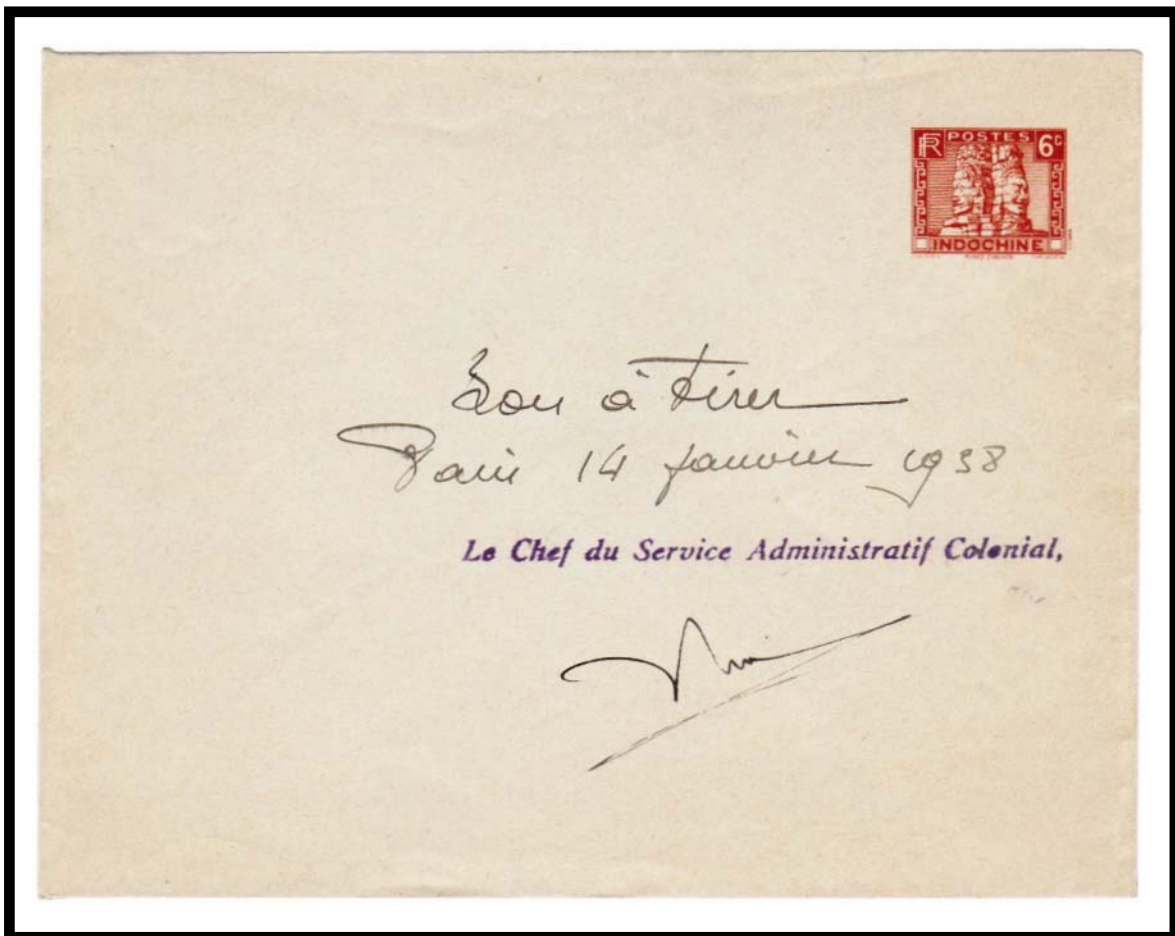
Indochinese Culture
6 cents Envelope
First Printing

The 6-cent envelope was the second value of the 1932 issue. In both cases, the indicium used the same colors as the postage stamps.



Indochinese Culture
6 cents Envelope Second Printing Proof

This envelope, originally prepared as a proof printing, was returned to the printer with authorization to proceed with the production of the stationery. The impression of the indicium is smaller than earlier printings. With this version the width is 20 millimeters as compared to 22 millimeters for the earlier printing.



Indochinese Culture
Use of 6 cents Envelope
First Printing

This envelope entered the postal system through a rural post office at Phong-Y, a small village in Thanh-Hoa Province. The 6-cents value of the envelope paid the letter rate to France in 1936.



POSTAL MARKINGS
PHONG-Y POSTE RURALE PROVINCE DE THANH-HOA
THANH-HOA ANNAM 17-3 36

REVERSE
SAIGON-CENTRAL COCHINCHINE 24 MARS 36
MULHOUSE 1 HAUT-RHIN 18.IV.36

Indochinese Culture
Use of 6 cents Envelope
First Printing

Additional contemporary stamps were affixed to this 6-cent envelope for postage and registration fees from Hanoi to Stasbourg, France.



POSTAL MARKINGS
HANOI R.P. TONKIN 3-5 37
registration label
REVERSE
STRASBOURG-PRINCIPAL BAS-RHIN

Indochinese Culture
Use of 6 cents Envelope
Second Printing

The 6-cent rate for France and colonies applied from 1925 until 1937. The internal letter rate was 6 cents from 1937 until 1942. After 1942, the 6-cent envelopes had outlived their usefulness.

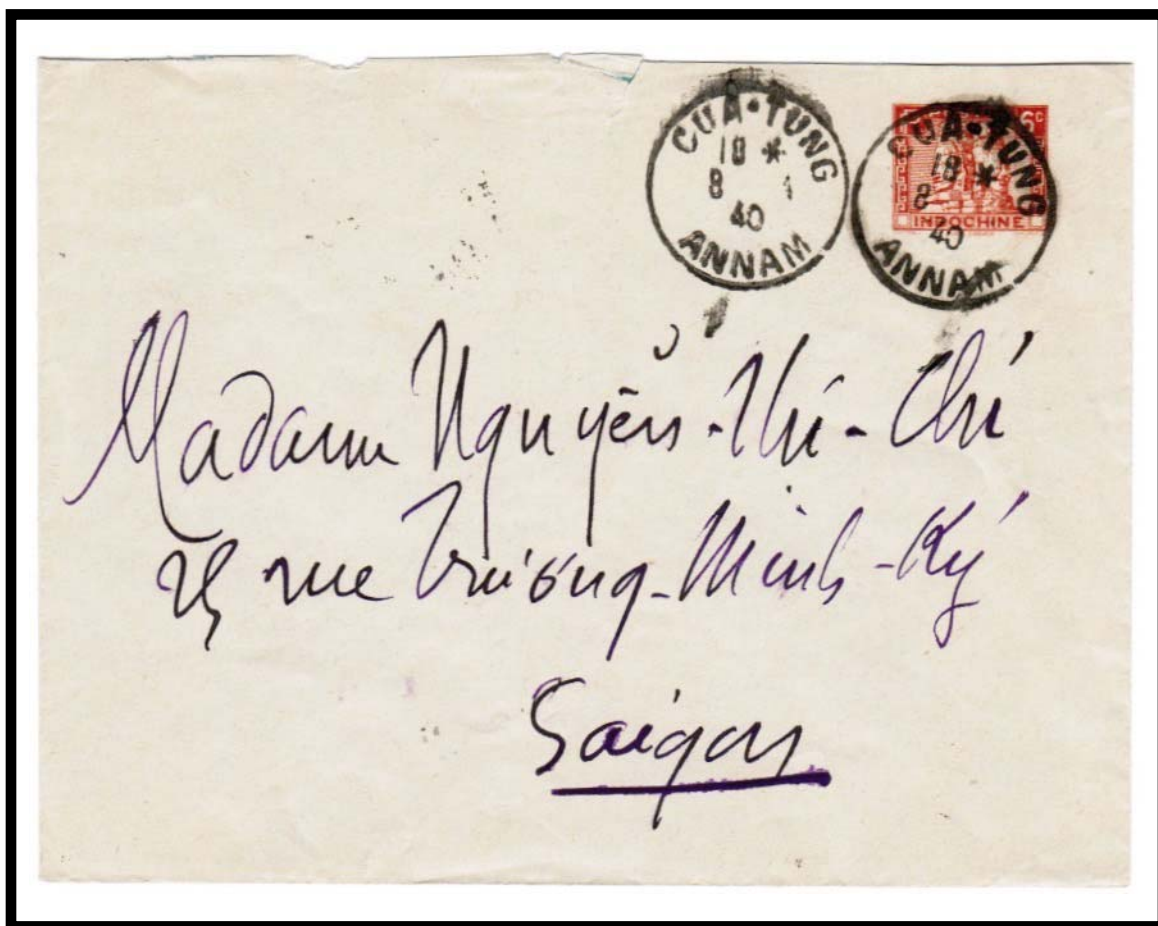
Here the envelope was addressed to a missionary in Annam.



POSTAL MARKINGS
HUE ANNAM 17-4 42
slogan handstamp
REVERSE
QUANG-TRI ANNAM 18-4 42

Indochinese Culture
Use of 6 cents Envelope
Second Printing

In 1937, the internal postage rate rose to 6 cents giving the 6-cent envelope a new purpose within the rate structure.



POSTAL MARKINGS
CUA-TUNG ANNAM 8-4 40
REVERSE
SAIGON-CENTRAL COCHINCHINE 12-4 40

Indochinese Culture
Use of 6 cents Envelope
Second Printing

Here the second printing of the 6-cent Indochinese Culture envelope was updated with the complete set of Golden Gate Exposition commemorative stamps for a registered airmail letter to France in 1939.



POSTAL MARKINGS

SAIGON-CENTRAL COCHINCHINE 18-8 39
airmail and registration labels
handstamped "Franked by Sender"

REVERSE

PERIGUEUX DORDOGNE 26-8 39
BERGERAC DORDOGNE 27-8 39

Indochinese Culture 7-cent Envelope

Effective 1 April 1938, the letter rate to France increased from 6 cents to 7 cents. A 7-cent envelope was prepared but, because of wartime conditions, the new denomination was not distributed until 1944,



Indochinese Culture Use of 7 cents Envelope

Although the 7-cent envelope was prepared to satisfy the letter rate to France, its first reported use is in 1944. Additional postage was added to make up the 40-cent registered letter rate on this local mailing.



POSTAL MARKINGS

CANTHO COCHINCHINE 28-3 44
registration label

REVERSE

SAIGON-PRINCIPAL COCHINCHINE 29-3 44
CANTHO COCHINCHINE 30-3 44

Indochinese Culture Use of 7 cents Envelope

A 7-cent envelope was cut down in size and turned sideways for sending a message from Soctrang to Saigon.



POSTAL MARKINGS
SOCTRANG COCHINCHINE 10-2 47

Indochinese Culture
Use of 7 cents Envelope

The sender added a 3-cent stamp to this 7-cent envelope for the wartime local letter rate.



POSTAL MARKINGS

DALAT ANNAM 6 -9 45
slogan handstamp

REVERSE

HUE ANNAM 8-9 45