

LAOS

French influence in Laos did not materialize until the 1890's. Thus, any correspondence from this province during the Group Type's use is extremely difficult to find, even material from the capitol at Vientiane, as Group Type letters represent the first material to emanate from this philatelically popular area.

Vientiane



Single and double weight overseas commercial letters from Vientiane in 1901 to Switzerland, both via Saigon with Basel receivers.

LAOS – Small Village Use

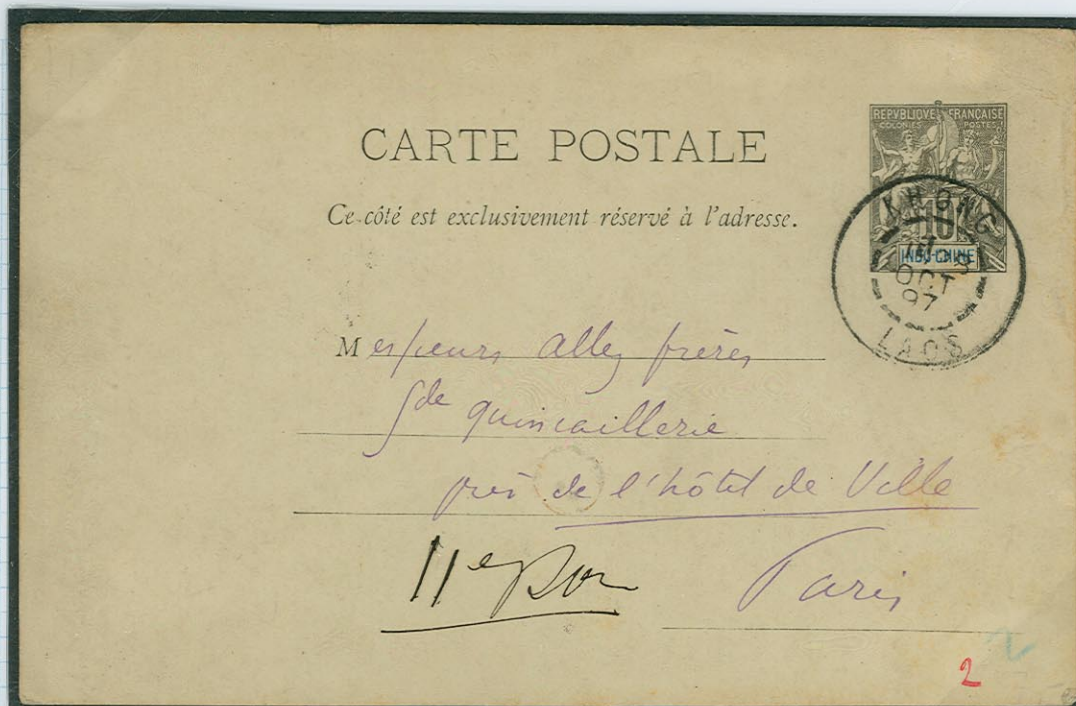
Attopeu
Ban-Nam-Bac
Bassac



French community rate letters from Attopeu to Naves in 1903 and Ban-Nam-Bac to Paris in 1900 with an unusual routing for the latter via Dien-bien-phu, Tonkin (April 7th), Van-bu, Tonkin (April 12th) and Hanoi (April 20th) reflecting its origins in the remote area of Haut Laos. Below a short message post card from the village of Bassac to Bordeaux via Saigon.

LAOS – Small Village Use

Khong
Khone



Postal card from Khong in 1897 to Paris via Saigon, and a remarkable triple weight registered letter (3 x 15c postage on a weight of 30 – 45g plus 25c registration) from Khone in 1901 under the Laos administration – see Cambodia section for material from Khone under Cambodia. This letter traveled via Saigon to Marseille.

LAOS – Small Village Use

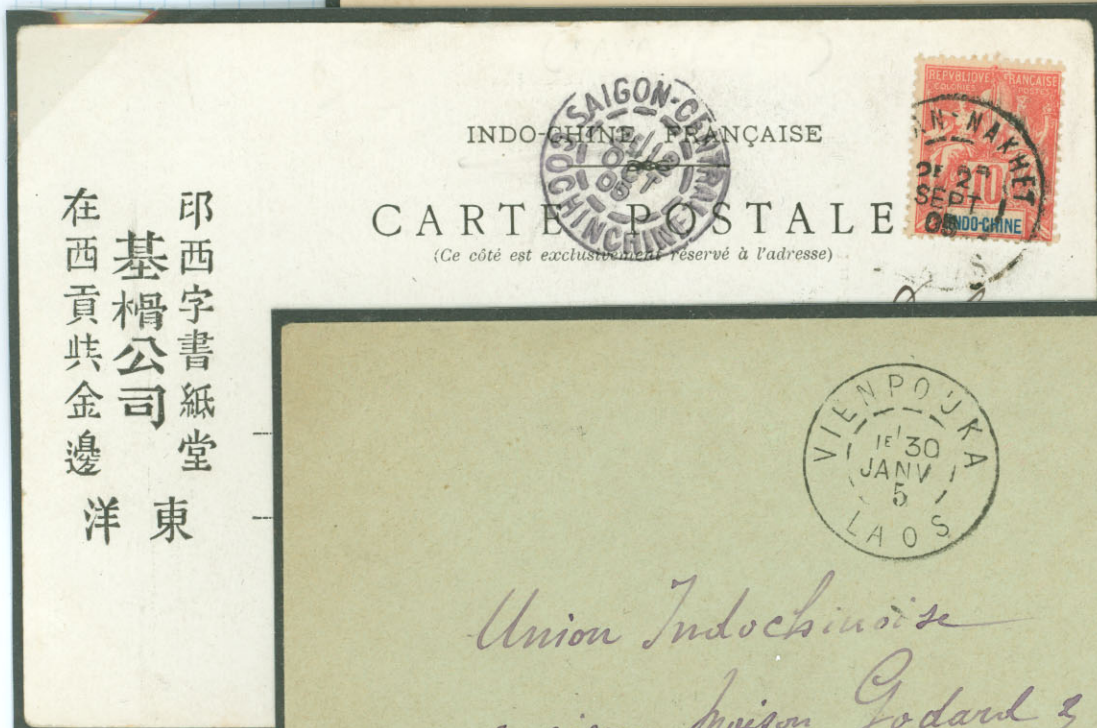
Houeisai
Luang-Prabang



Postal stationery items from Houeisai, a small village in northwestern Laos, and Luang-Prabang in the center of the territory. The 5c printed matter rate from Houeisai on May 30, 1905 is remarkable in that it was posted to Chieng Mai in northern Siam, and the most direct route is via the impassable mountains to the west. However, this envelope traveled south via Luang-Prabang (June 10th) and Vientiane (June 20th) to Bangkok (May 13th) and then north through Siam arriving in Chieng Mai on August 10th. Based on the manuscript endorsement on the front, this unsealed envelope had lost its contents enroute.

LAOS – Small Village Use

Muong-Ngoi
Savan-Nakhet
Vienpouka
Pak-Se-Don



印西字書紙堂
基槽公司
在西貢共金邊
洋東



印西字書紙堂
基槽公司
在西貢共金邊
洋東

LAOS – Military Mail
Earliest Recorded Military Letter

Moung-Sen



Possibly the first recorded example of military mail from the province of Laos, this letter was written by an officer of the troops fighting in Moung-Sen, Laos in early 1895. Such can be established by the manuscript endorsement: *Troupes du Mékong* at the top, and the manuscript endorsement at the bottom left: *Le capitaine comm. & le poste de Moung-Sen – Brosset-Heckel*. As an officer, Brosset-Heckel was not entitled to a reduced rate, so this registered letter to his wife bears the full 50c postage (25c postage for <15g and 25c registration). It originated in the military post office at Moung-Sen and was brought to the nearest established post office – that of Khong, Cambodia which was close-by for entry into the regular mails. The letter was postmarked at Khong on January 9, 1895, transited via Saigon on January 17th, and traveled via the Modane - Paris rail line enroute to Lyon where it was received on February 16th. This letter has been listed on the Tricot French Colonial Military mail web site since 2003 as the earliest recorded example of military mail from Laos, and not been challenged by an earlier example.