

## Chargeurs Réunis

La Compagnie des Chargeurs Réunis was a shipping firm that plied the Marseille-Haiphong route with about 14 or 15 round trips a year from 1926 through 1939.



PICTURE POSTCARD DEPICTS THE PIERS AT SAIGON BELONGING TO CHARGEURS RÉUNIS.

Chargeurs Réunis  
Haiphong Office

In 1904, a sender used printed stationery for the Haiphong Office of Chargeurs Réunis to transmit a mailing to an employee of the company located in Bordeaux.



POSTAL MARKINGS  
HAIPHONG TONKIN 1 DEC 04  
REVERSE  
BORDEAUX GIRONDE 4-1 05

# Chageurs Réunis Stationery

Company stationery posted from Haiphong in 1950 carries the corner imprint  
"Compagnie Maritime des CHARGEURS RÉUNIS".



POSTAL MARKINGS  
HAIPHONG TONKIN 28-9 1950



Chargeurs Réunis  
Saigon Office

The corner imprint for Chargeurs Réunis's Saigon office stationery did not even specify a street address. Presumably, the company was so well known that its location was general knowledge.



POSTAL MARKINGS

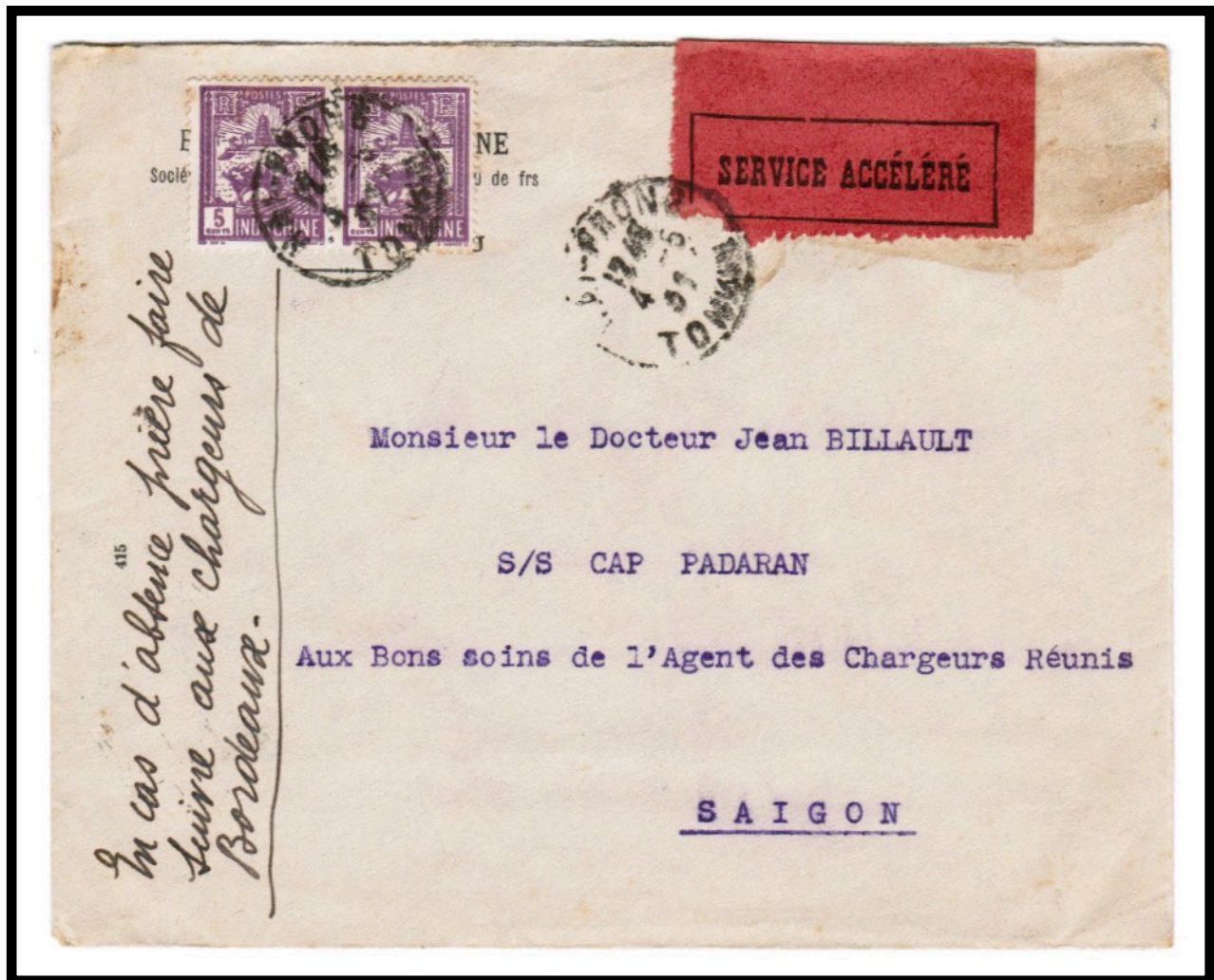
SAIGON-CENTRAL COCHINCHINE 20-5 33 (blue)  
rate certification handstamp

REVERSE

MARSEILLE-GARE-AVION BCHES DU RHONE 28 • V 1933  
REIMS PRINCIPAL MARNE 30 • V 1933

Chargeurs Réunis  
Mail to Onboard Passenger

A letter was sent from Haiphong via the expedited rail service in order to catch a passenger aboard the S. S. *Cap Padran* before the ship departed Saigon. The sender added a notation to left side of his envelope that said, "in case of (his) absence, please forward to Chargeurs at Bordeaux."



POSTAL MARKINGS

HAI-PHONG TONKIN 4-5 31  
expedited service label

REVERSE

SAIGON-CENTRAL COCHINCHINE 7-5 31



## Chargeurs Réunis Stationery

The reverse side of Chargeurs Réunis stationery shows the company's nautical logo imprinted on the flap of the envelope.



### POSTAL MARKINGS

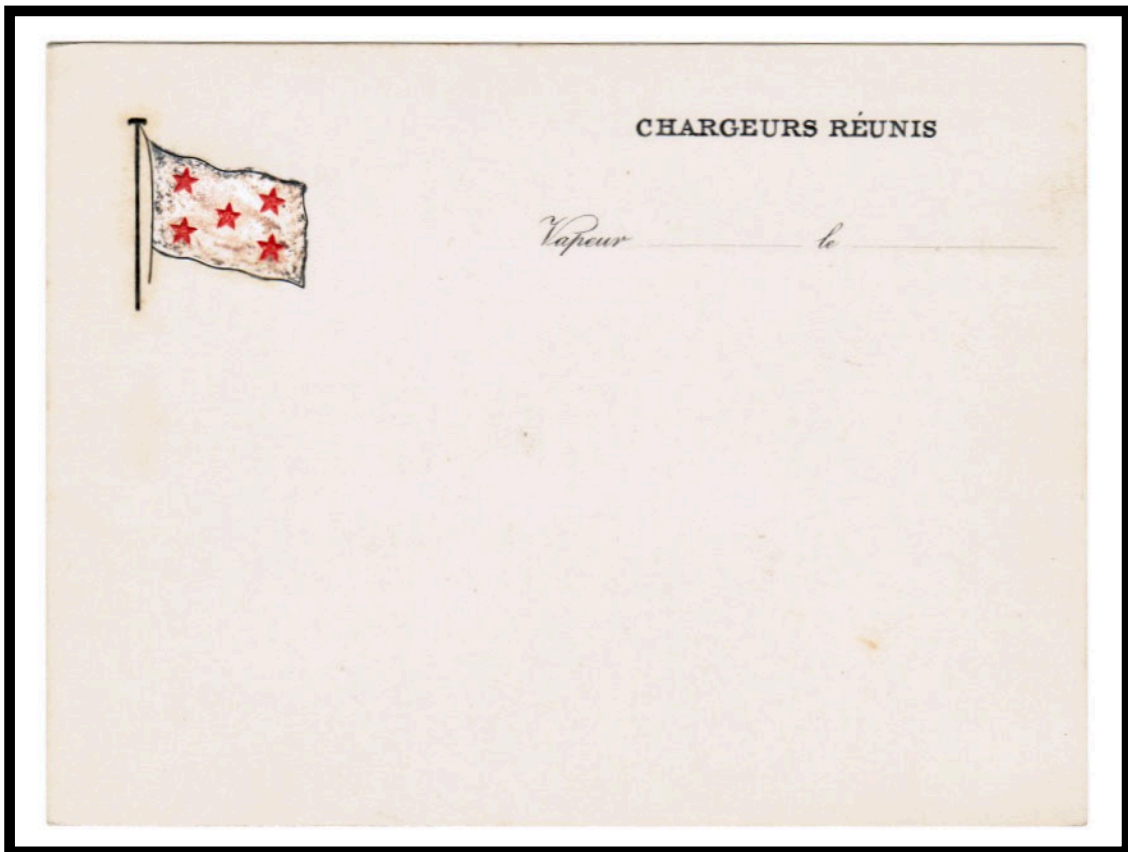
SAIGON-CENTRAL COCHINCHINE 4-5 32  
ROUVRAY COTE D'OR 17-5 32

### REVERSE

SAIGON-CENTRAL COCHINCHINE 4-5 32  
framed Saigon-Marseille routing handstamp

## Chargeurs Réunis Stationery

The upper right of a Chargeurs Réunis note card provided a place to enter the ship's name as well as the date. The line's flag is embossed at the upper



## Chargeurs Réunis Advertising Meter

In 1949, a meter of the Chargeurs Réunis office in Paris shows that the geographical focus of the ship line was West Africa, South America, Indochina and South Africa.



POSTAL MARKINGS  
PARIS - 123 14 IX 49

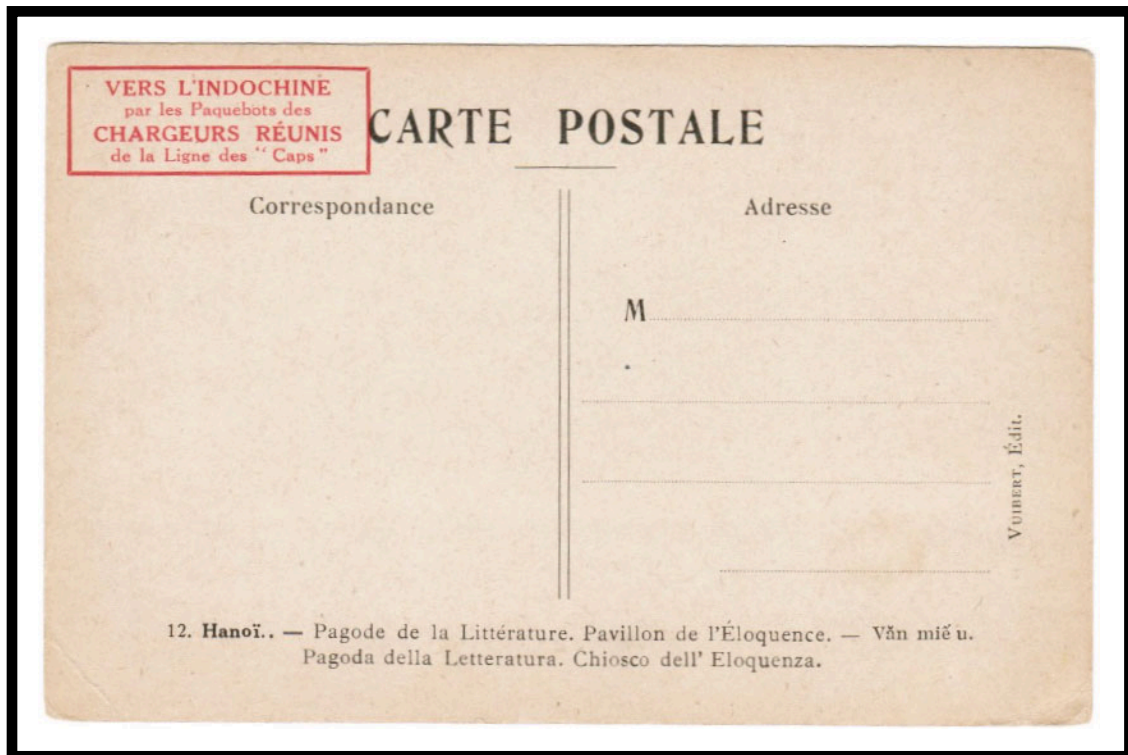


# Chargeurs Réunis Promotional Marking

Printed at the upper left of this picture postcard is a message that translates as:

To Indochina  
By the packet steamers of  
Chargeurs Réunis  
The Line of the "Caps"

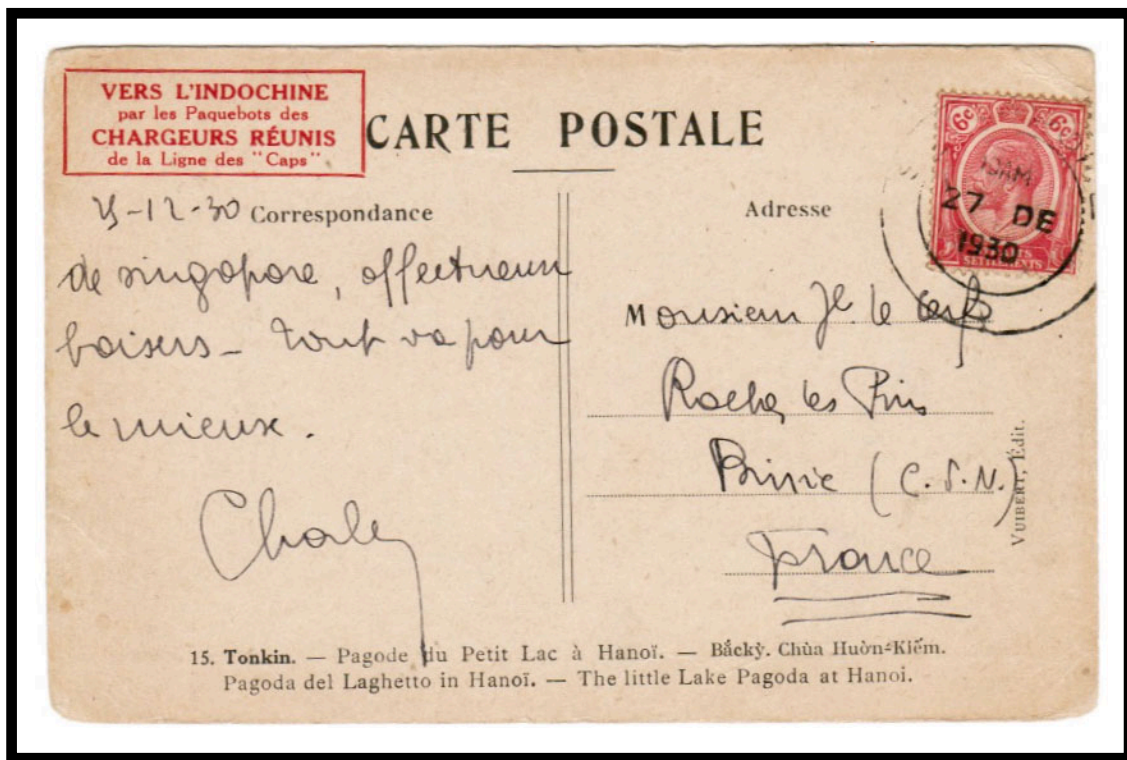
**VERS L'INDOCHINE**  
par les Paquebots des  
**CHARGEURS RÉUNIS**  
de la Ligne des "Caps"



# Chargeurs Réunis Promotional Marking

Here a postcard posted from Singapore to France bears the Chargeurs Réunis advertisement printed in red.

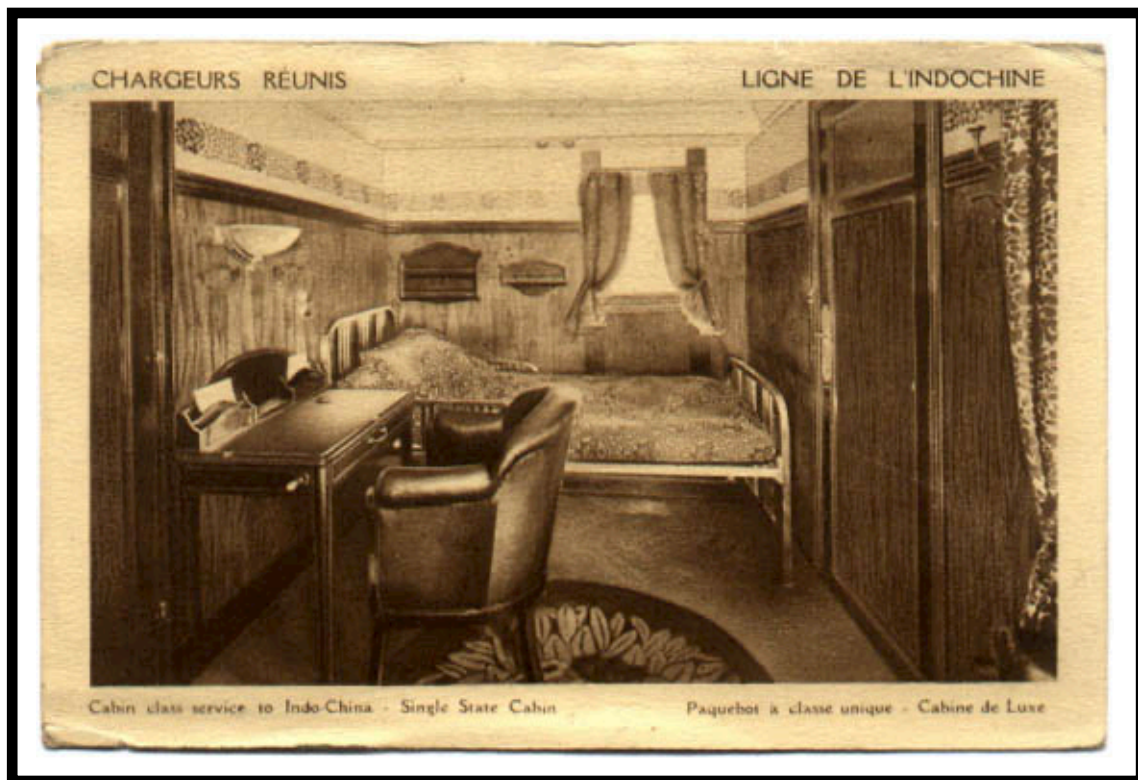
VERS L'INDOCHINE  
par les Paquebots des  
**CHARGEURS RÉUNIS**  
de la Ligne des "Caps"



POSTAL MARKINGS  
SINGAPORE 27 DE 1930

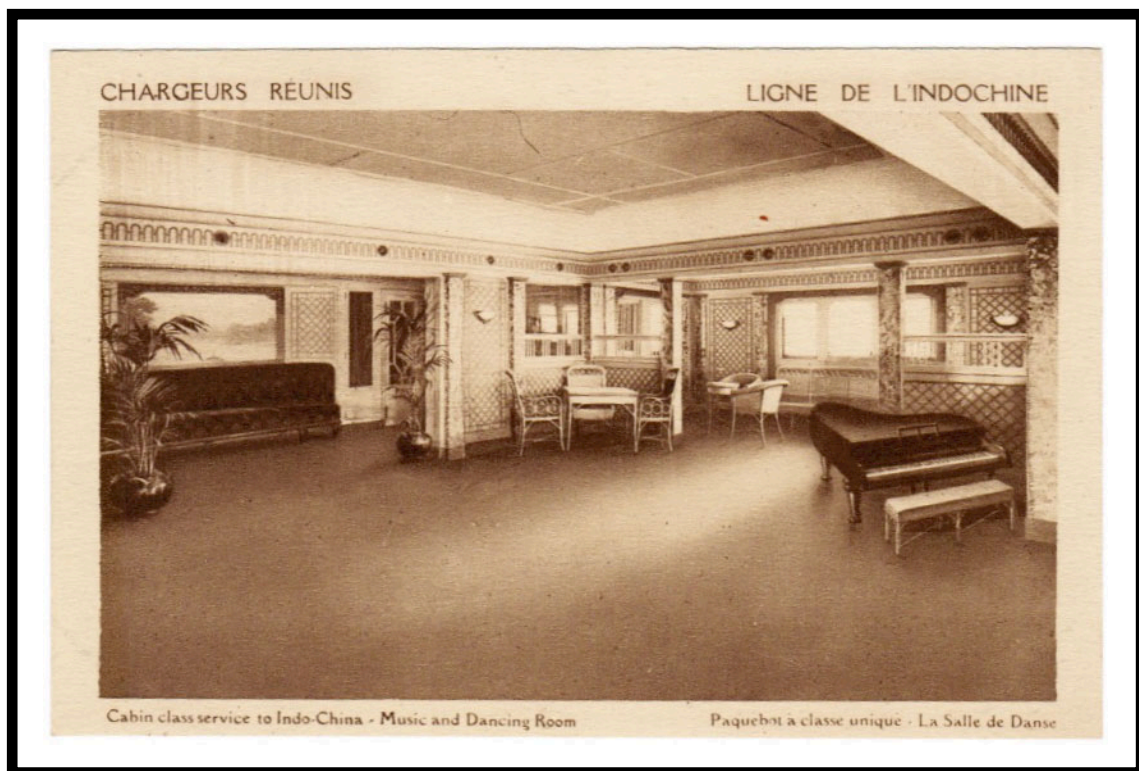
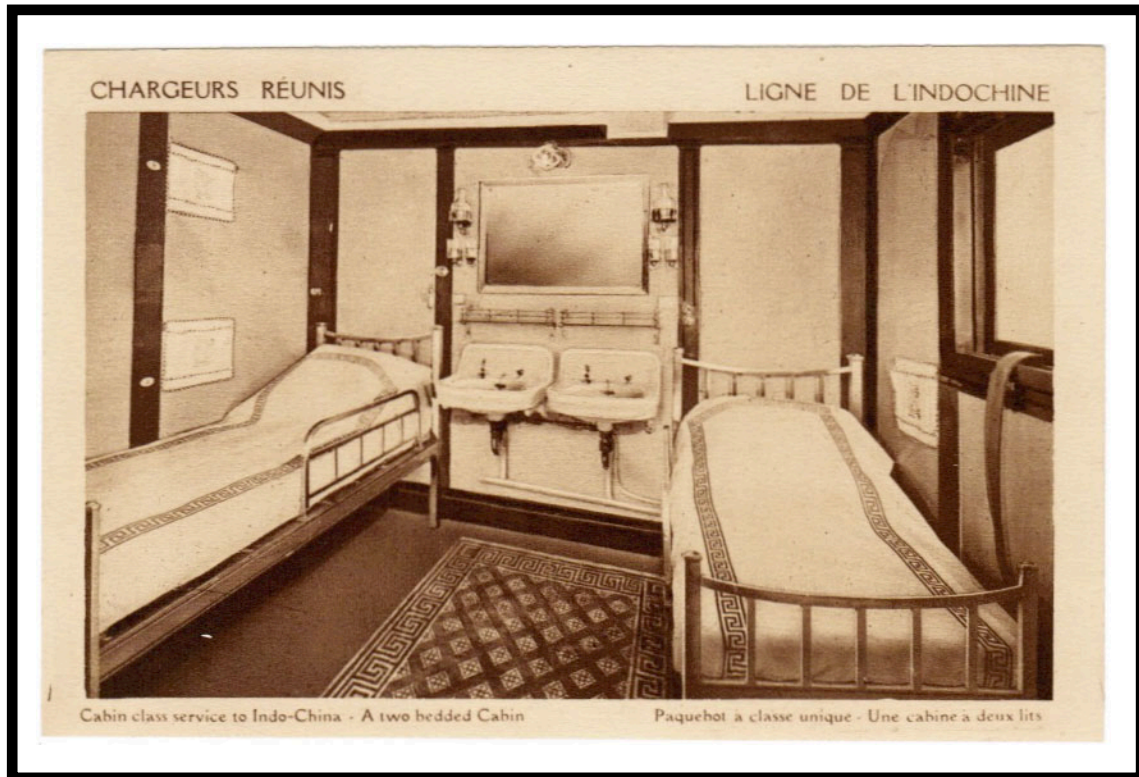
## Chargeurs Réunis Ship's Accommodations

Ship's accommodations varied considerably. This postcard image of a "single state cabin" shows fine furnishings within an open space.





# Chargeurs Réunis Ship's Accommodations





# Chargeurs Réunis Ship's Accommodations

