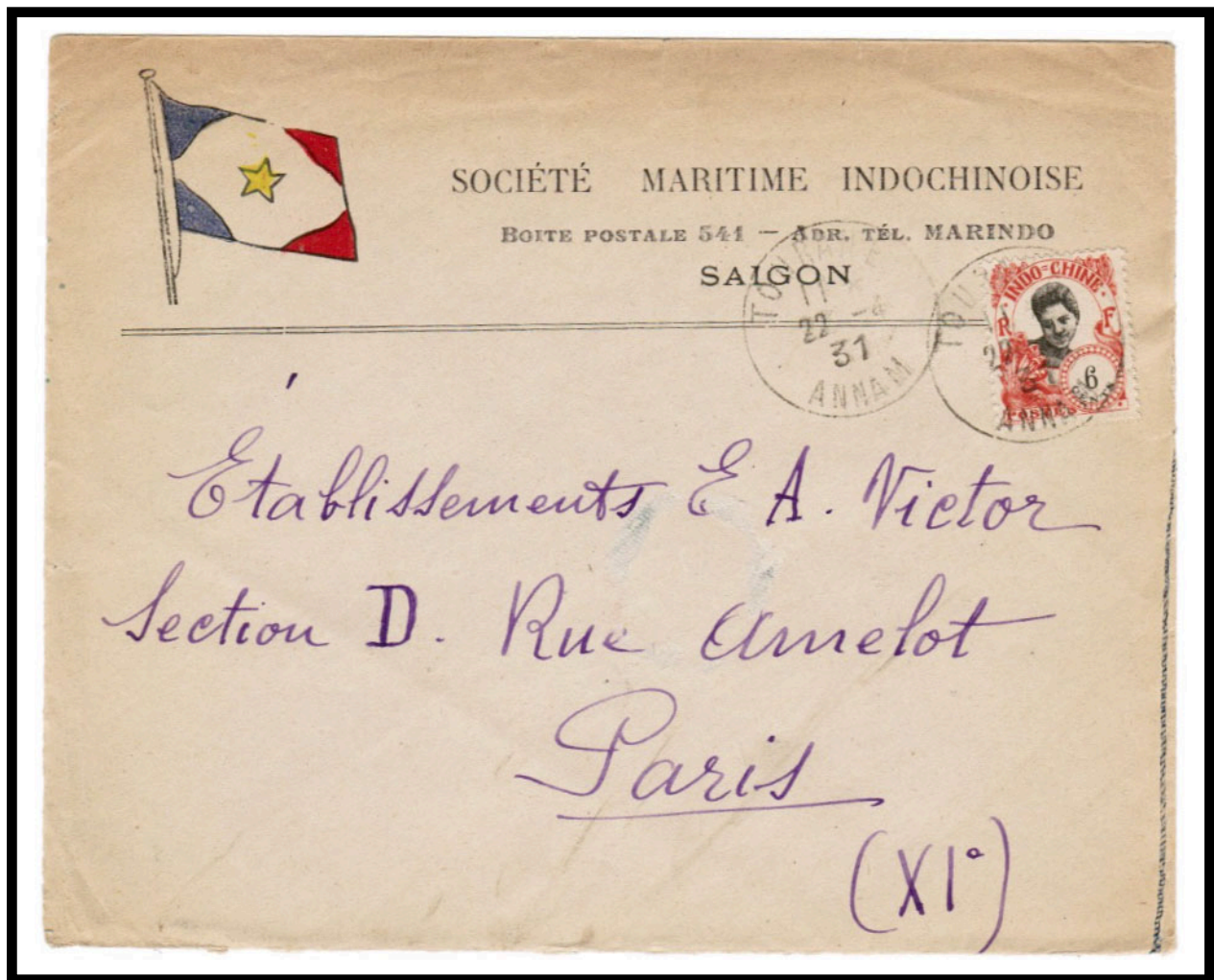


## Maritime Society of Indochina

The Maritime Society of Indochina was very likely an association of companies interested in the export and import shipping business. Although the society's address is identified as being in Saigon, this letter to Paris was posted from Tourane in 1931.



POSTAL MARKINGS

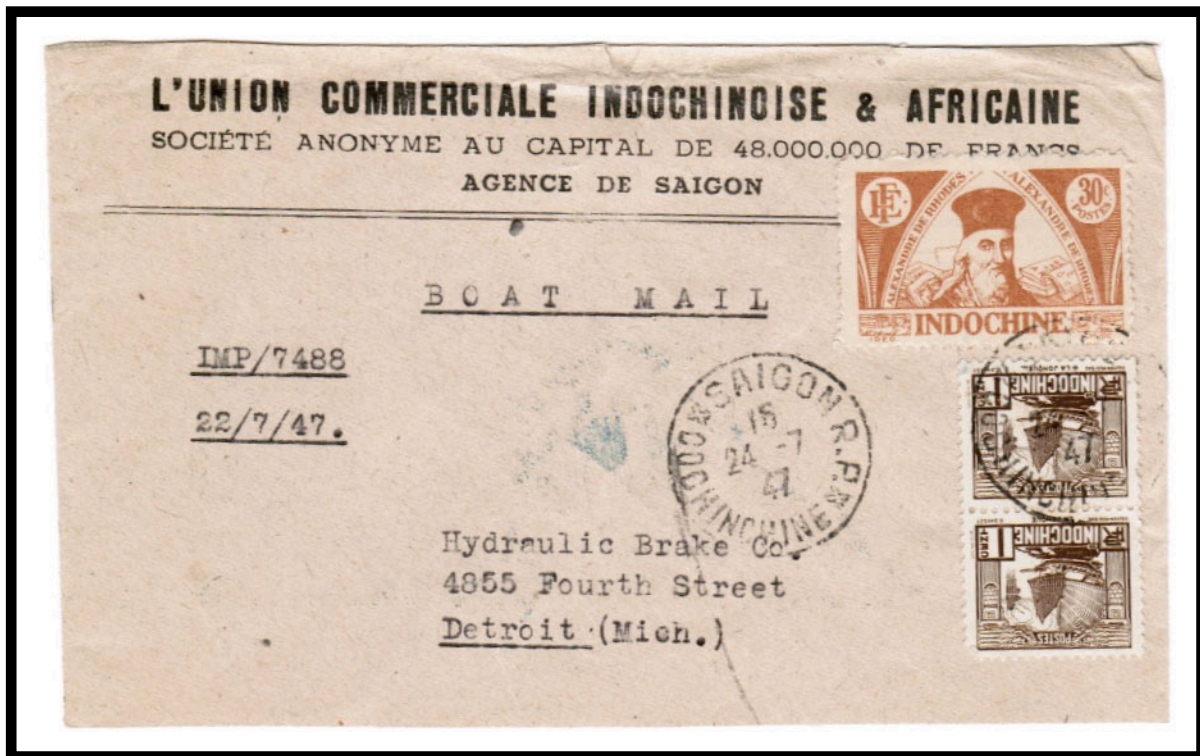
TOURANE ANNAM 22-4 31

REVERSE

SAIGON-CENTRAL COCHINCHINE 25-4 31

## Boat Mail

After World War II, airmail; had garnered much of the mail traffic from Indochina to Europe and North America. This 1947 letter to the United States carried the typed instruction "BOAT MAIL." Formerly, when airmail had been the exception, it was common practice to prominently indicate airmail routing instructions on the fronts of covers. This mailing demonstrates a reversal of the practice.



### POSTAL MARKINGS

SAIGON R.P. COCHINCHINE 24-7 47

REVERSE

SAIGON R.P. COCHINCHINE 24-7 47

## Coastal Services

A steam-powered launch owned by Barthélémy and Pourtalés Maritime Transport Company cruises a lagoon in Camranh Bay.



POSTAL MARKINGS  
TOURANE ANNAM 11 AOUT 07  
REVERSE  
TOURANE ANNAM 11 AOUT 07



## La Thérèse Hanoi

Based in Hanoi, La Thérèse was a boat that carried passengers and freight along the Red River.



## Clear River Paddle Boat

An early postcard shows an unidentified stern-wheel paddleboat at the pier in Viet-Tri. The Clear River (Song Lo) is one of the two main tributaries of the Red River.



## Service Subventionné des Correspondances Fluviales

Two stern-wheel paddle boats, the *Emeraude* and the *Perle*, of the Service Subventionné des Correspondances Fluviales are tied up at the pier.

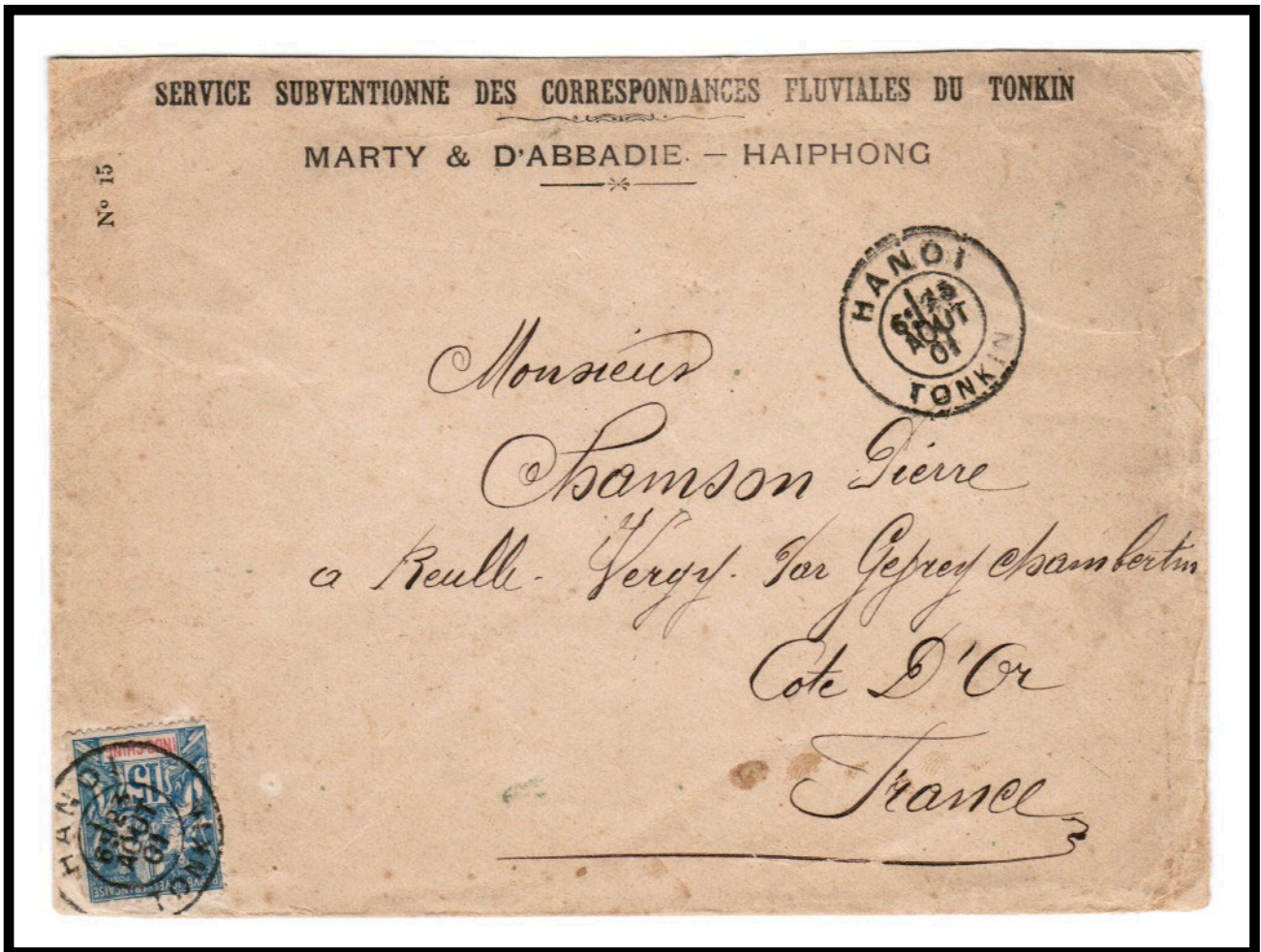


POSTAL MARKINGS  
HAIPHONG TOKIN 27 JUL 12



Marty & d'Abbadie  
Haiphong

Marty & d'Abbadie was a company that built ships and operated local shipping lines along rivers and in the Gulf of Tonkin.



POSTAL MARKINGS

HANO TONKIN 25 AOUT 01

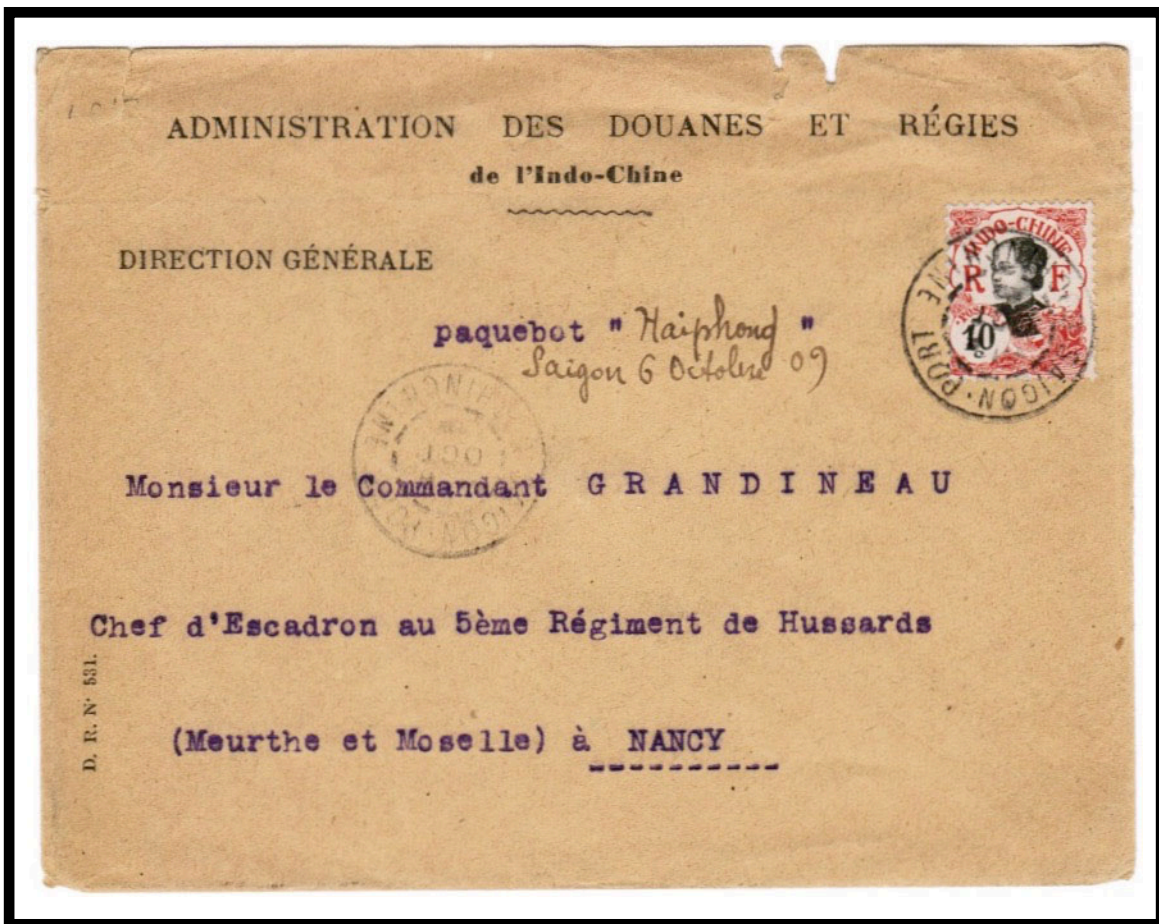
REVERSE

LYON-GARE RHONE 4 OCT 01

GEVREY-CHAMBERTIN COTE D'OR 5 OCT 01

Coastal Mail Service  
S.S. Haiphong

This official mail from the Customs and Regulations Office was addressed to the squadron leader of the 5th Hussars Regiment in Nancy, France. Interestingly, the address also specifies transport on the S.S. *Haiphong*, one of the coastal service ships that served Saigon. Operating until 1914, the S.S. *Haiphong* was one of the last coastal ships that carried mail to ports in Southeast Asia.



POSTAL MARKINGS

SAIGON-PORT COCHINCHINE 6 OCT 09

REVERSE

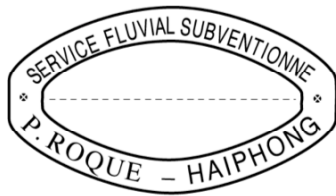
SAIGON-CENTRAL COCHINCHINE 6 OCT 09

NANCY M<sup>TRE</sup> ET M<sup>SLE</sup> 2-11 09



## P. Roque's River Service

Handed over at a boat stop along the Cam Le River, this envelope received the cachet of P. Roquet's subsidized river service. Upon arrival at Tourane, the stamp was canceled by Tourane's postmark and the framed "PAQUEBOT" was applied to the envelope.



PAQUEBOT



POSTAL MARKINGS

TOURANE ANNAM 13 AOUT 11  
framed PAQUEBOT

REVERSE

WATTNYL 12.1X.11

## P. Roque's River Service

Imprinted stationery of the period identified P. Roque as a boat owner ("Armateur") at Haiphong. Curiously, the letter had been marked for service by the Transsiberian Railway.



### POSTAL MARKINGS

HAIPHONG TONKIN 30 AVRIL 14  
framed R with manuscript registration number

### REVERSE

ST GALLEN BRF. EXP. 25. V. 14

Jules Gauthier River Transport  
Thainguyen

A 1923 mailing from Thainguyen is handstamped with the purple marking for “Jules Gauthier River Transport Thai-Nguyen.” Thainguyen’s river is the Cong River.



POSTAL MARKINGS  
THAINGUYEN TONKIN 7 NOV 23  
REVERSE  
HANOI TONKIN 7-11 23



# Messageries Fluviales Cochinchina

The corner imprint on this envelope identifies the company as Messageries Fluviales de Cochinchine (“River Freight of Cochinchina”). Location of the company’s offices is not indicated, but the mailing was posted from Saigon, the economic center of Indochina.



POSTAL MARKINGS  
SAIGON-CENTRAL COCHINCHINE 11 JUN 10  
REVERSE  
LYON RHONE 5-710

MESSAGERIES FLUVIALES  
AGENCE de MYTHO

Shipping companies operating on Indochina's rivers maintained offices where it did business. This postcard bears an example of the cachet from Mytho Office of Messageries Fluviales.



POSTAL MARKINGS

MYTHO COCHINCHINE 28 JUIL 08  
SAIGON-CENTRAL COCHINCHINE 29 JUIL 08

## Pier at Vinh-Long

Located in the Mekong Delta region, Vinh-Long is a river port town on the right bank of the Tien River town. A postcard scene shows a riverboat tied at the pier at Vinh-long.





## Messageries Fluviales

A picture postcard depicts a steamer at the docks of “M.F.” in Pnompenh. Presumably, “M.F.” stood for “Messageries Fluviales” (“River Messengers”).



Jules Rueff  
Mekong River Service



## Massi Mekong River Service

The most remote part of commercial transport service on the Mekong River was in Upper Laos. This postcard depicts the Massi on an open stretch of the river.

