

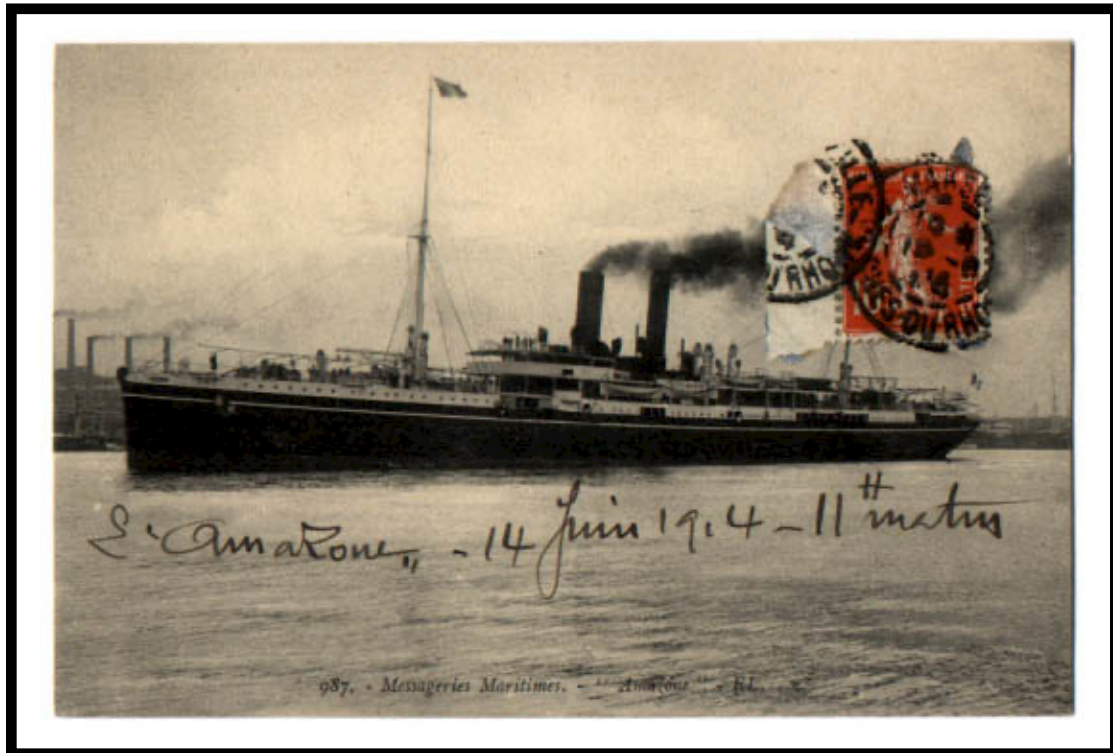
Amiral Kersaint

The *Amiral Kersaint* was renamed *Cap Varella* and started her first Far East voyages for Chargeurs Réunis on 18 February 1927.



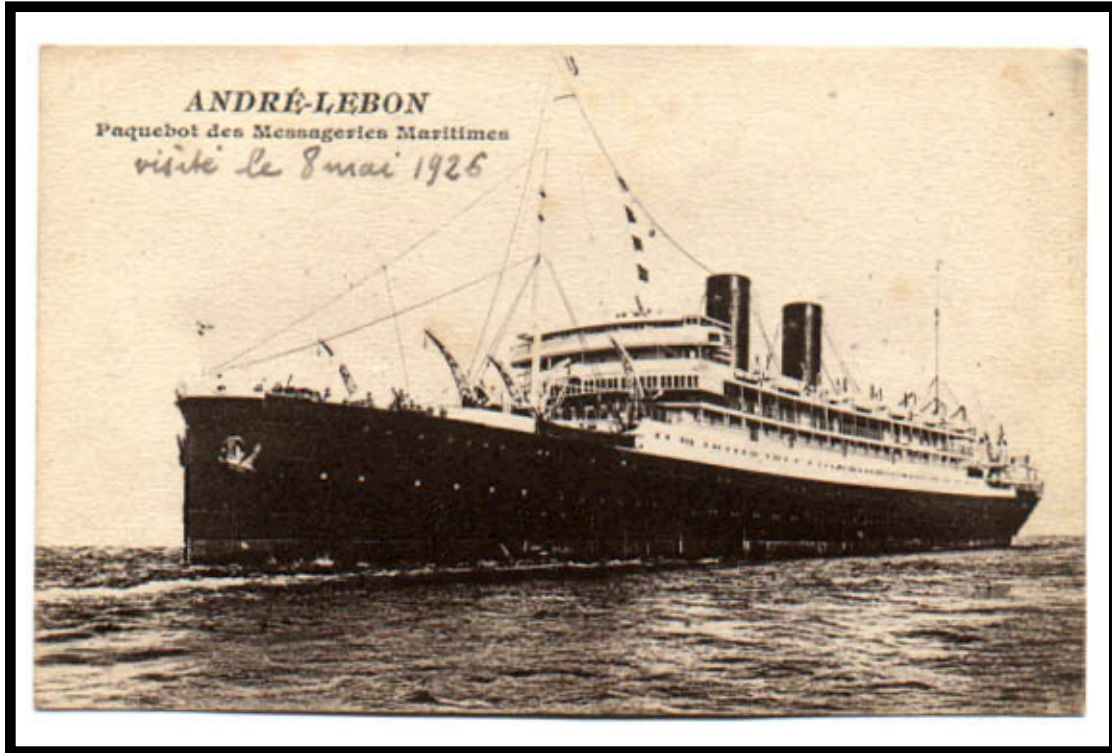
Amazone

Launched in 1896 under the name *Laos*, the *Amazone* was renamed in 1903 and made 29 Far East voyages during 1912-27.



André Lebon

Built in 1913, the *André Lebon* served Messageries Maritimes's Far East Line. During World War I, she was converted to a hospital ship. In 1923, she was in port in Yokohama when an earthquake struck. She was credited with saving 1,500 lives.



SS André Lebon

The printed inscription on this picture postcard reads "SOUVENIR DE VOYAGE S/S ANDRE LEBON Cie des Messageries Maritimes." The André Lebon made 509 voyages to the Far East over the period 1915-41.



POSTAL MARKINGS

SAIGON-CENTRAL COCHINCHINE 30-7 37

REVERSE

SAIGON-CENTRAL COCHINCHINE 30-7 37

André Lebon Olive Oil Advertising

An olive oil merchant in Marseille used an image of the *André Lebon* to promote his line of products, noting that the ship was a mail carrier on the route to Indochina. On the reverse, the various products are listed along with spaces for a range of sizes. Prices were handwritten along with a end date for their validity (21 March 1925).



Angers

Launched in 1907 under the name *Cap Arcona*, the *Angers* made 27 Far East trips during 1921-31 as part of the Messageries Maritimes Line.



Angers

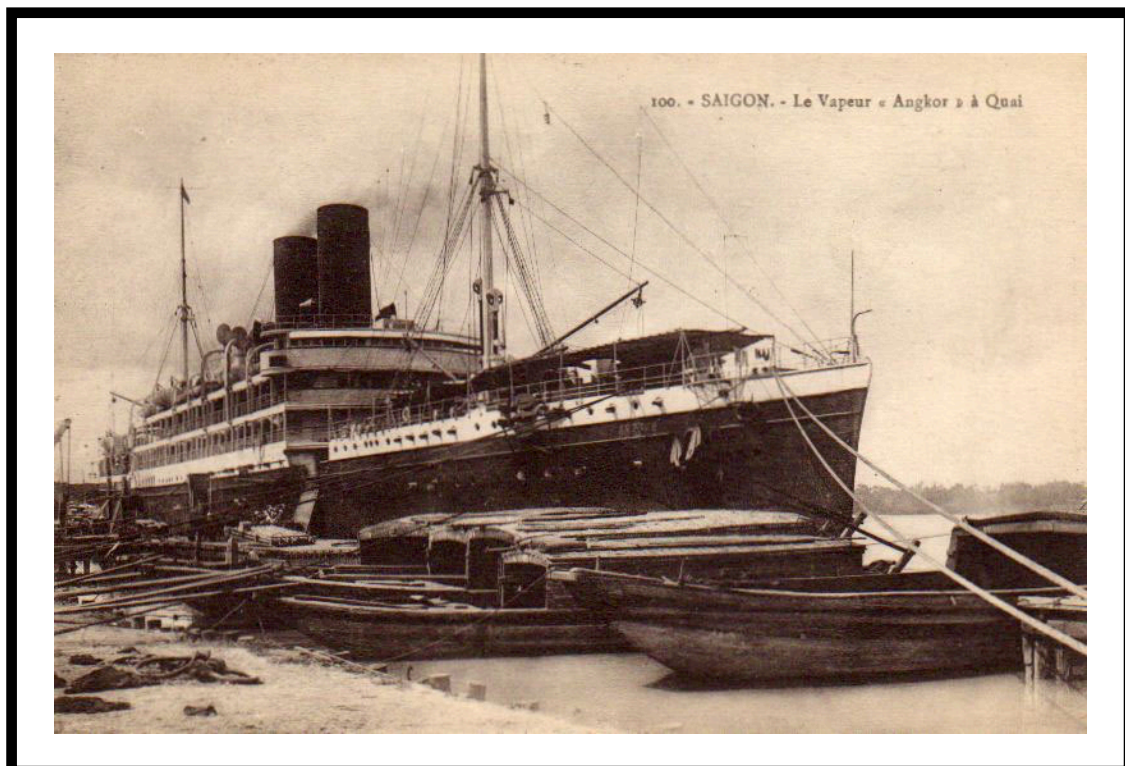
An irregularly shaped postcard, postmarked at Haiphong in 1923, conveys the message that the *Angers* was formerly named *Cap Arcona*.



POSTAL MARKINGS
HAIPHONG TONKIN 21-4 23

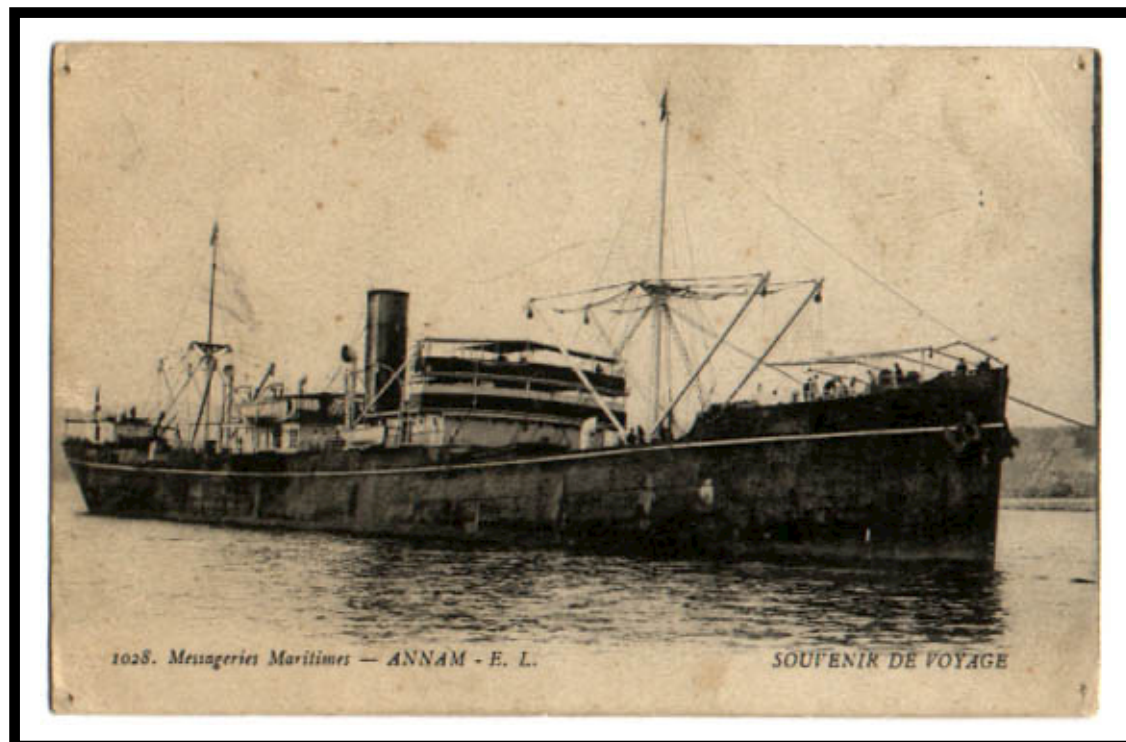
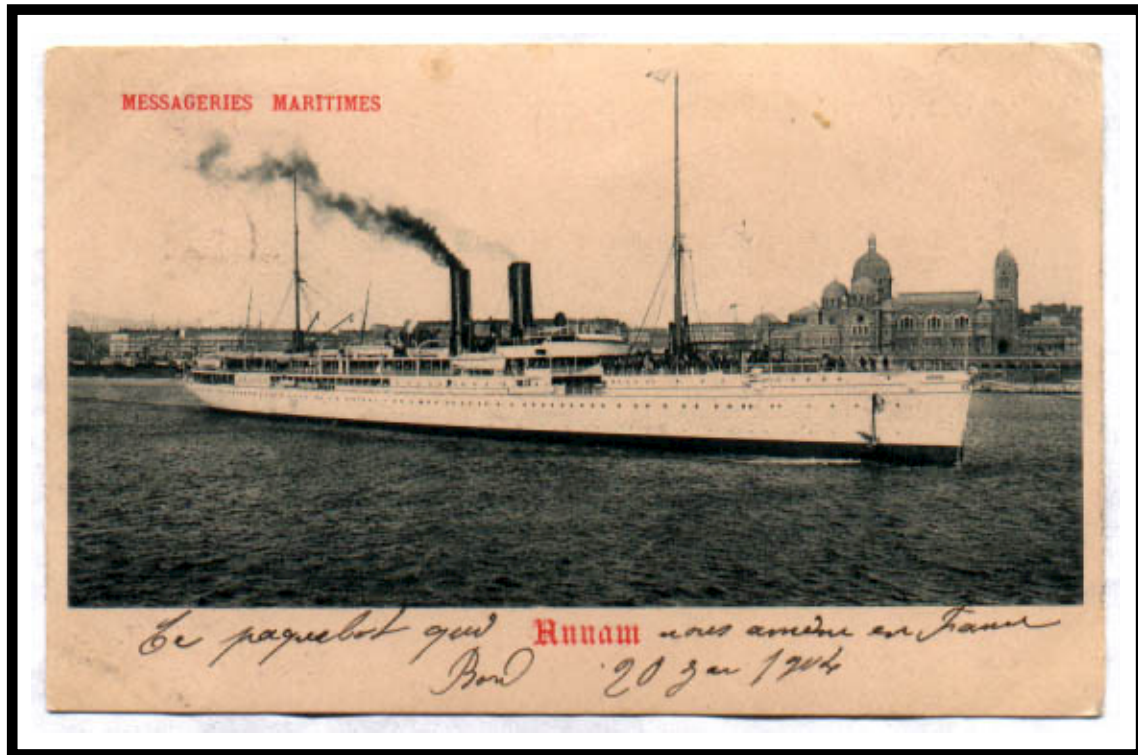
Angkor

Originally built as the *Atlantique*, which made 15 Far East voyages during 1911-17, the ship was reconstructed following World War I. Delivered in 1921, the *Angkor* made 18 Far East voyages in 1921-32.



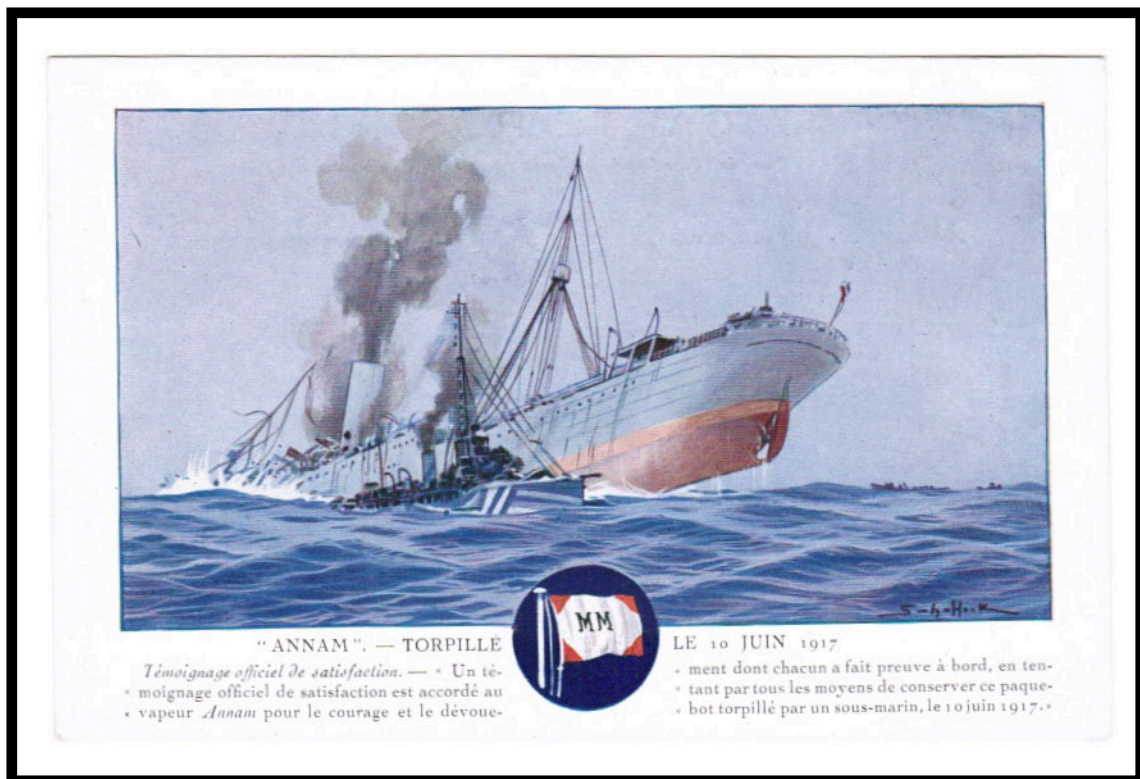
Annam

The *Annam* made 14 voyages to the Far East in 1899-1904. The ship was renamed *Tourane* and made 21 more trips from June 1904 to 1910.



Annam

The second ship named *Annam* was acquired by Messageries Maritimes when it took over Cie. Française de l'Est Asiatique. Messageries Maritimes issued a picture postcard that commemorated the sinking of the *Annam*, a maritime casualty of World War I. While in the Mediterranean Sea, a German submarine torpedoed the *Annam* on 17 June 1917.



Aramis

Launched on 30 June 1931, the *Aramis* made 23 Far East voyages during the period 1932-1940. In 1940, she was taken over by Japan and renamed *Teia Maru*. In 1944, the ship was torpedoed and sunk by US submarine.



Aramis

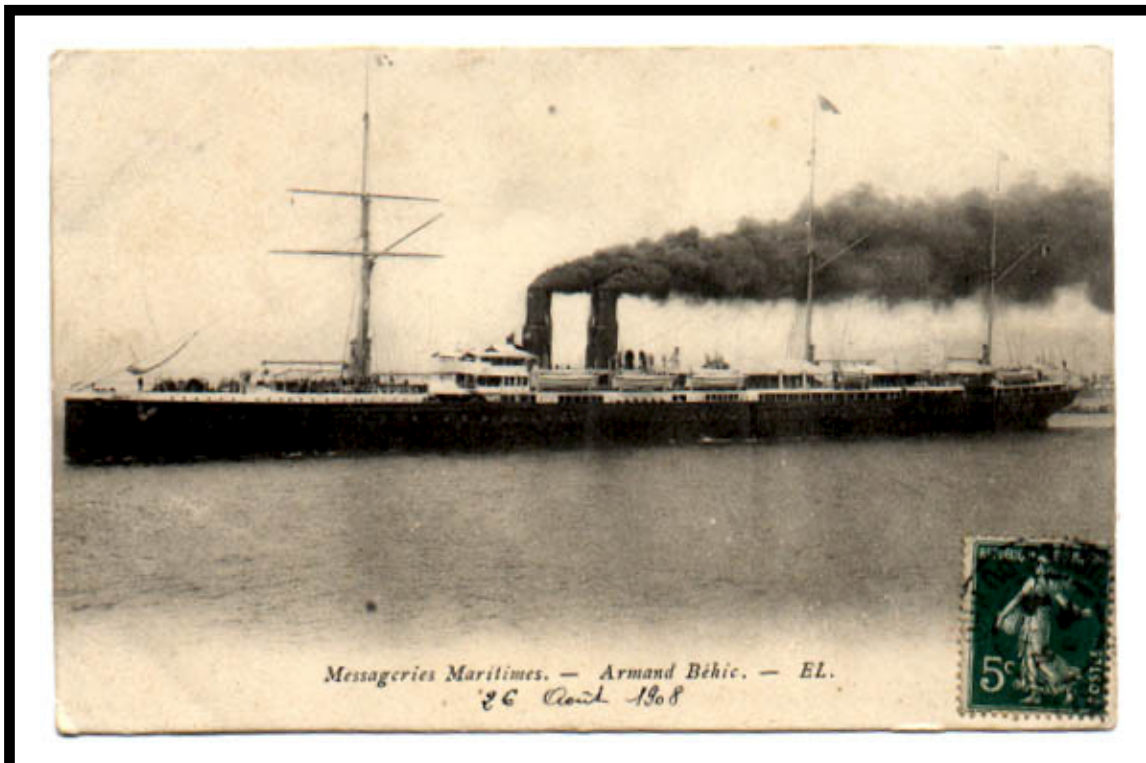
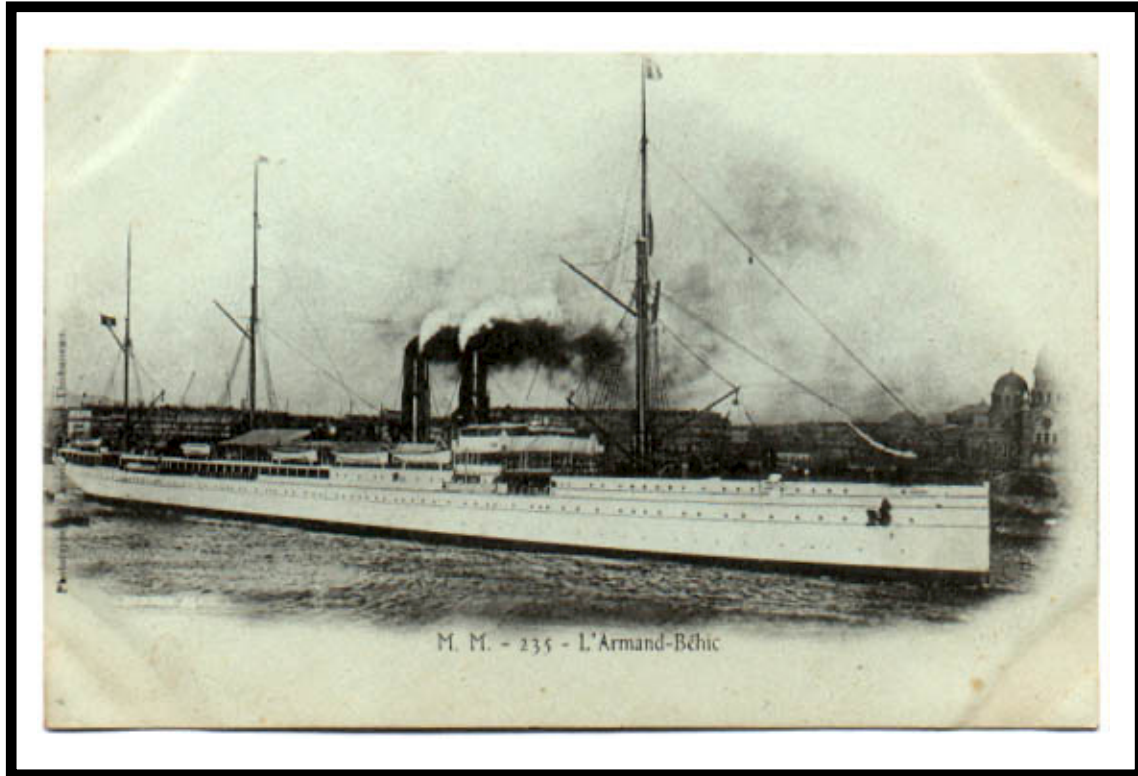
In December 1937, the surface letter rate to France rose to 7 cents. The manuscript notation at the upper left on this cover directs the mailing to go via sea mail ("voie maritime") aboard the SS *Aramis*, which departed Saigon on the following day, 14 June.



POSTAL MARKINGS
SAIGON COMMERCE COCHINCHINE 13-6 38
REVERSE
PARIS XI DISTRIBUTION 7-VII 1938

Armand Behic

The *Armand Behic* departed on her first Far East voyage on 18 October 1903. She made a total of 31 trips there through 1923. She was scrapped in 1924.



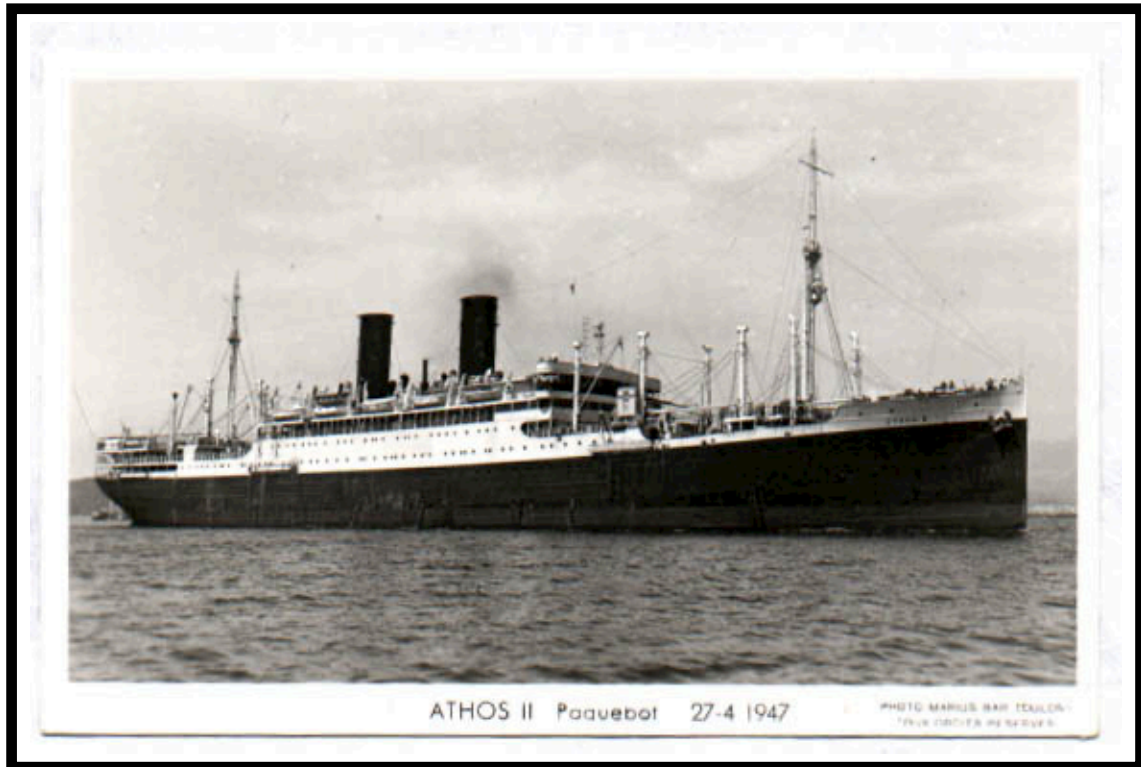
Athos

The *Athos* made only 4 Far East voyages during 1915 to 1916. On 17 February 1917, she was attacked and sunk near Malta by a German submarine with a loss of 754 lives.



Athos II

The original *Athos* was torpedoed in the Mediterranean Sea on 17 February 1917. The *Athos II* was launched 12 November 1926. She was assigned to Messageries Maritimes Far East service and made 37 voyages during 1927-41.



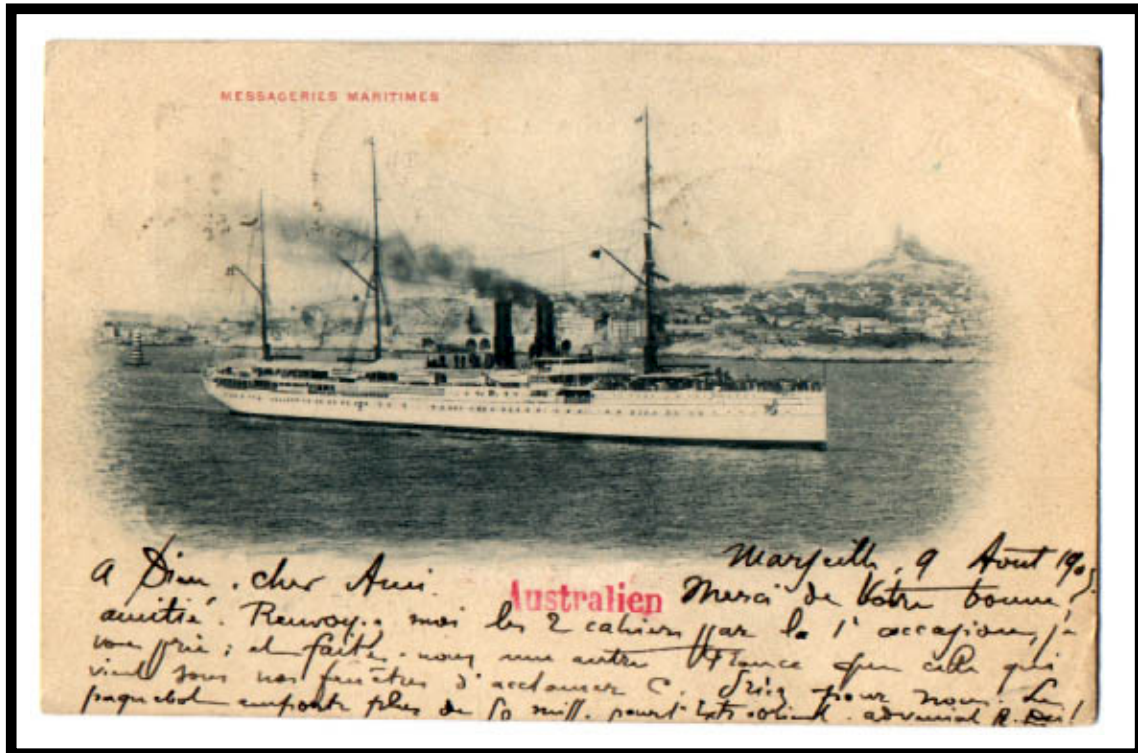
Atlantique

Launched on 5 November 1899, the *Atlantique* originally served in the South Atlantic. Later, she made 15 voyages to the Far East during 1911-17. She was torpedoed on 16 September 1918. Ultimately, she was reconstructed and returned to service in 1921 under the name *Angkor*.



Australien

The *Australien* departed on her first Far East voyage on 9 August 1903. She made 24 trips there before being torpedoed on 19 July 1918 with the loss of 19 lives.



Azay le Rideau

Launched on 23 July 1910 as the *General*, she served in the German West Africa Line. As part of war reparations, she was transferred to Messageries Maritimes and renamed *Azay le Rideau*. She made 26 voyages to Far East during the period 1925-1936.



Bernardin de St. Pierre

The *Bernardin de St. Pierre* made nine Far East voyages during the 1927-1938 period.

This picture postcard, addressed to Saigon, was posted on the outbound leg of a packet ship, but not from the *Bernardin de St. Pierre*, which returned to Marseille on 5 December 1932



POSTAL MARKINGS
COLOMBO 16 NOV. 32
SAIGON-CENTRAL COCHINCHINE 30-11 32

Caledonien

The 4,200-ton *Caledonien* departed for her maiden voyage to the Far East on 20 October 1888. She made 50 trips. On 30 June 1917, she struck a mine and was destroyed with the loss of 51 lives.



Cambodge

As one of the earliest ships that provided regular service to Indochina, the *Cambodge* made Far East 13 trips during the period 1866-72.



POSTAL MARKINGS ON REVERSE
AMIENS-GARE SOMME 13-2 08

Chargeurs Réunis “Cap” Mail Boats

Five 8,000-ton cargo ships were converted into mail boats for Chargeurs Réunis and were given names beginning with “Cap”:

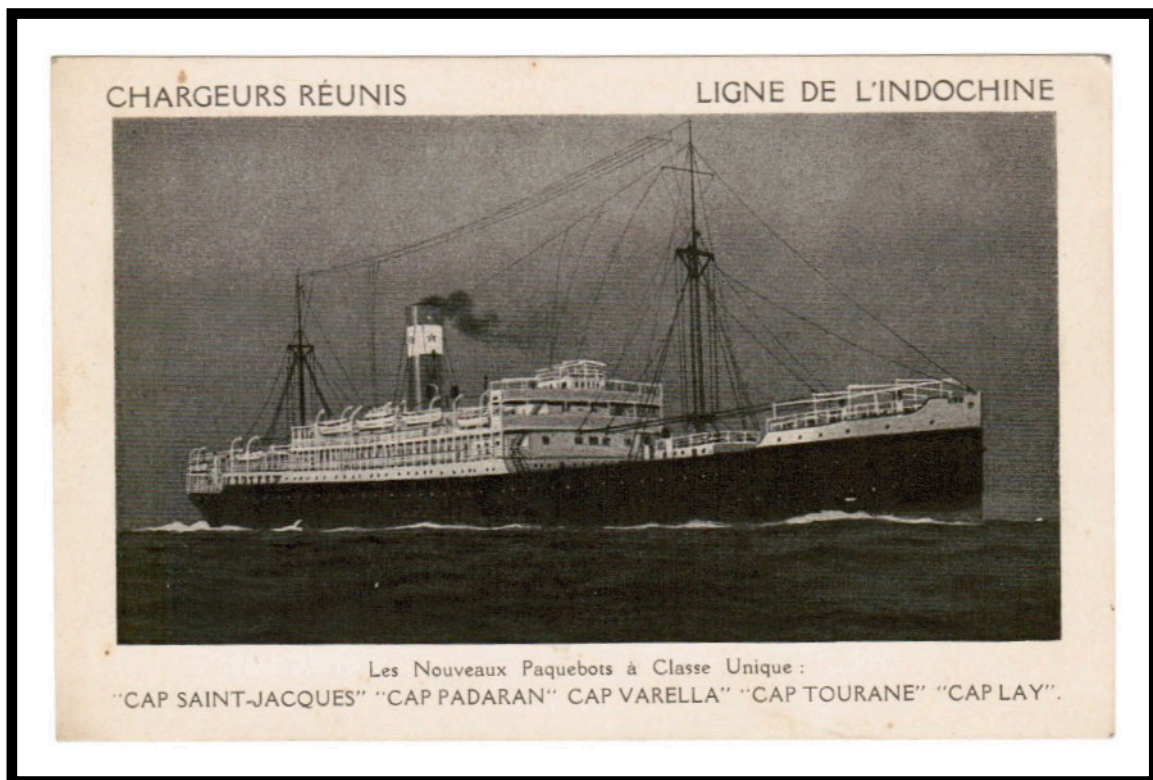
<u>former name</u>	<u>became</u>
<i>Guichen</i>	<i>Cap Saint Jacques</i>
<i>d’Iberville</i>	<i>Cap Padran</i>
<i>Jouffroy d’Abbans</i>	<i>Cap Tourane</i>
<i>Kersaint</i>	<i>Cap Varella</i>
<i>Halgan</i>	<i>Cap Lay</i>



Chargeurs Réunis "Cap" Mail Boats

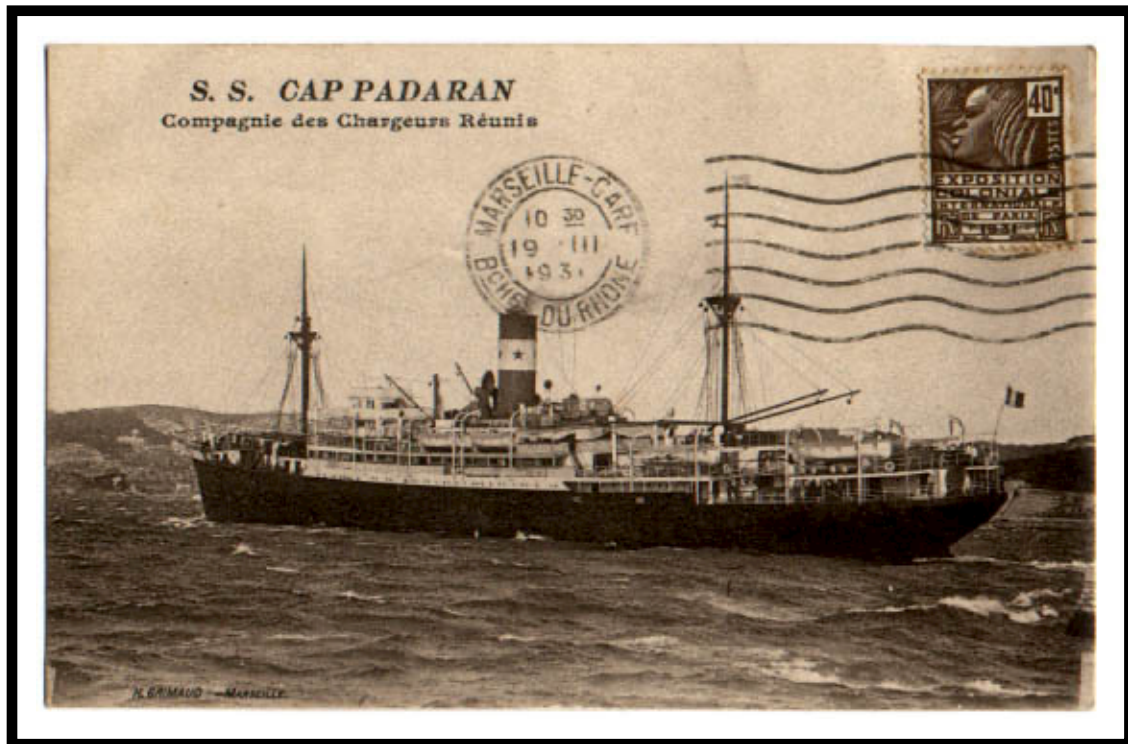
Chargeurs Réunis put the "Cap" ships into service over a period of two years:

<u>Ship</u>	<u>first voyage on</u>
<i>Cap Saint Jacques</i>	13 May 1926
<i>Cap Padran</i>	10 June 1926
<i>Cap Tourane</i>	29 October 1926
<i>Cap Varella</i>	18 February 1927
<i>Cap Lay</i>	15 April 1927



Cap Padaran

The Cap Padaran was the second of the "Cap ships" to enter service with Chargeurs Réunis on 10 June 1926. She made 37 trips to the Far East from 1926 to 1939.

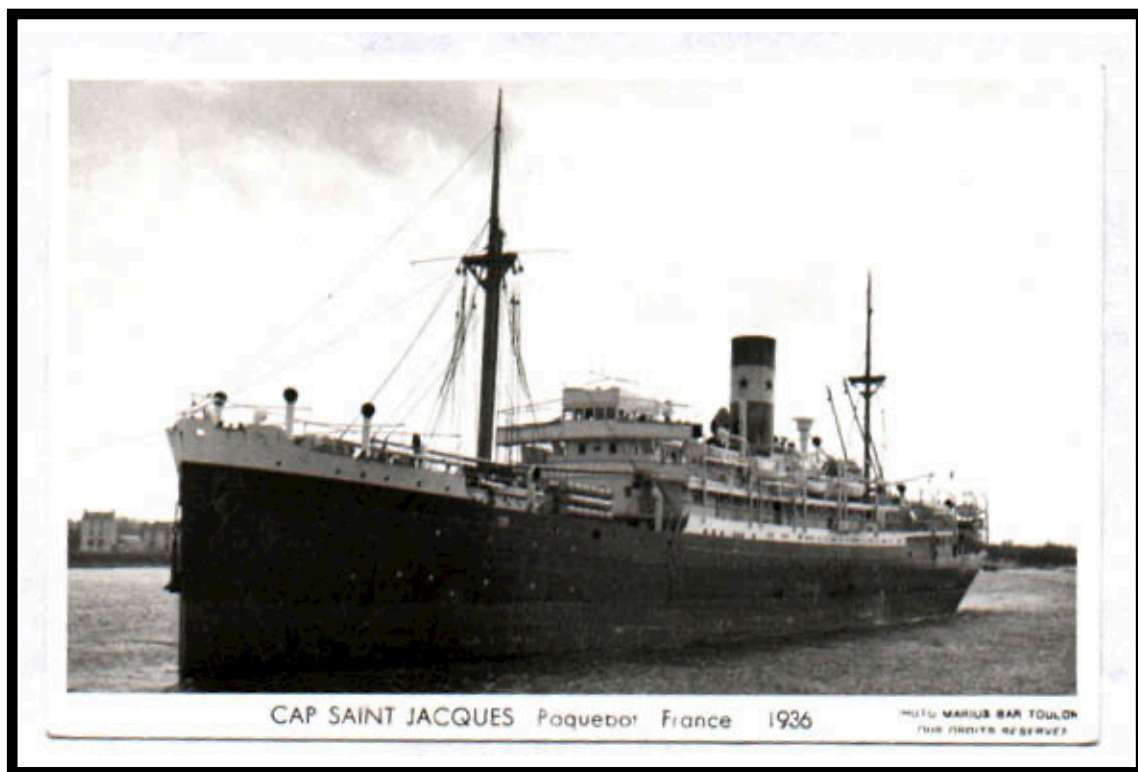


POSTAL MARKINGS

MARSEILLE-GARE BCHES DU RHONE 19 • III 1931

Cap Saint Jacques

The Cap Saint Jacques was the first of five cargo ships put into service as mail boats by Chargeurs Réunis. She made 36 trips to the Far East in 1928-39.



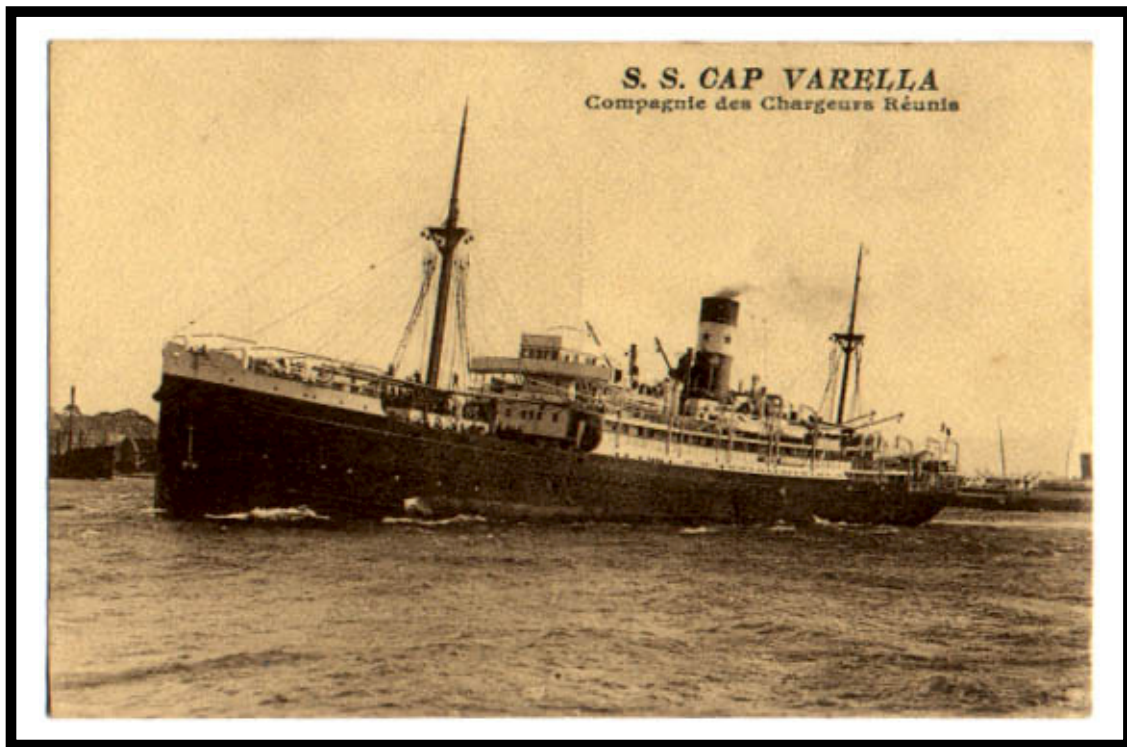
Cap Tourane

The *Cap Tourane* was Chargeurs Réunis's third "Cap ship." Similar to her sister ships, she made 37 Far East voyages in the period 1926-1935.



Cap Varella

Chargeur Réunis's fourth Cap ship was the *Cap Varella*. She sailed to the Far East 36 times from 1927 to 1939.



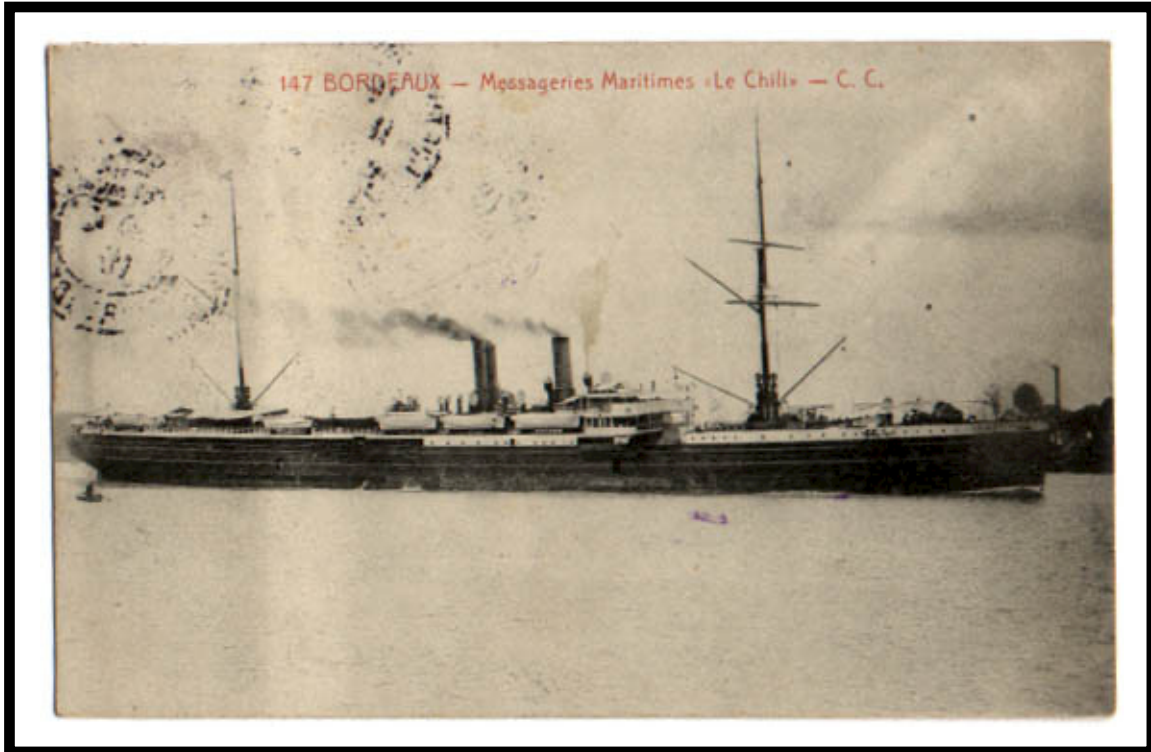
Chantilly

Originally named *Kerguelen*, the French government purchased the ship and transferred her to Messageries Maritimes in 1923. As part of the Indochinese Postal Line, the *Chantilly* made 27 voyages to the Far East during 1924-39. The Allies captured her in 1941 and returned her to Messageries Maritimes in 1945.



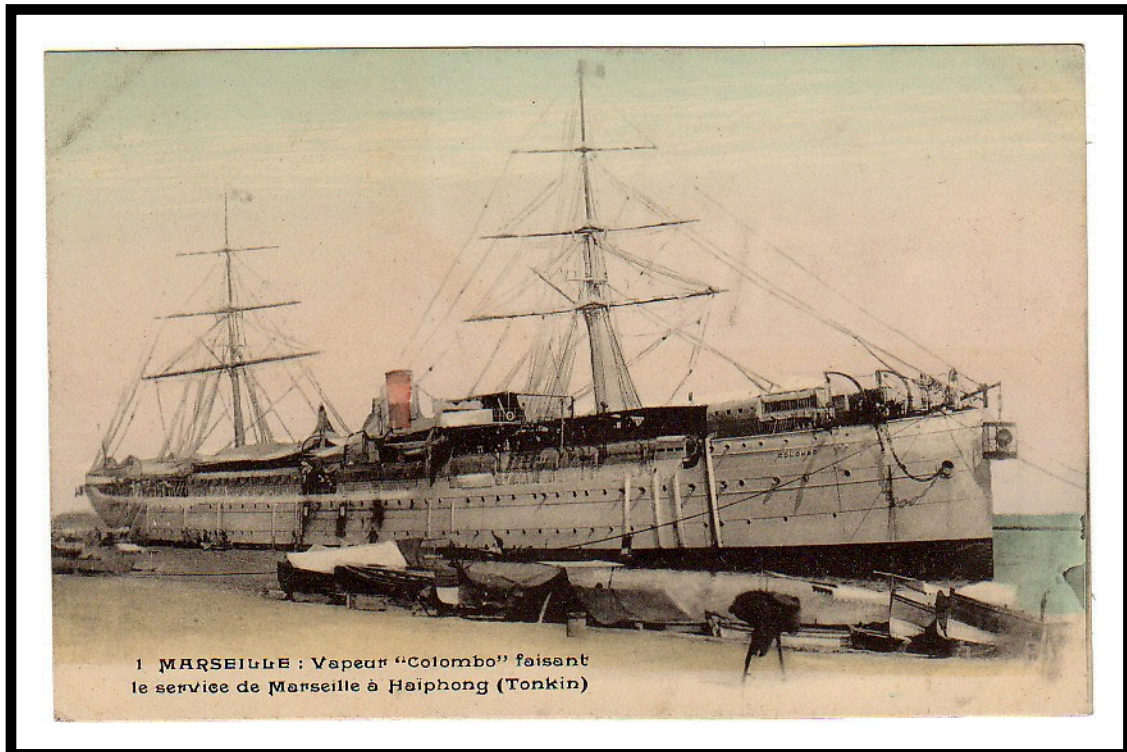
Chili

The *Chili* made 11 Far East voyages during 1913-24. She continued Far East service with Chargeurs Réunis during 1924-5. On 26 April 1927, she was sold for scrap.



Colombo

The *Colombo* was acquired in 1904 when Messageries Maritimes took over Compagnie Nationale de Navigation de Marseille. In 1910, she was disabled by a typhoon. After, she was towed to Tourane, condemned and scrapped



Cordillère

The *Cordillère* was launched on 12 October 1895. Her commercial service was in the South Atlantic and in the Far East. She was sold for scrap in 1925.



Cordillère

With the wartime suspension of Messageries Maritimes's South Atlantic service, the *Cordillère* was assigned to the Far East Line. She made 19 voyages during 1913-23.



D'Artagnan

The *d'Artagnan* was one of the Messageries Maritimes's first new vessels constructed after World War I. During 1925-1941, she made 42 voyages to the Far East.



Désirade

After the wreck of the *Cap Lay* in 1928, several large ships of the South Atlantic Line were redirected for Far East service. The *Désirade* made 16 voyages for Chargeurs Réunis to the Far East from 1929 to 1939.



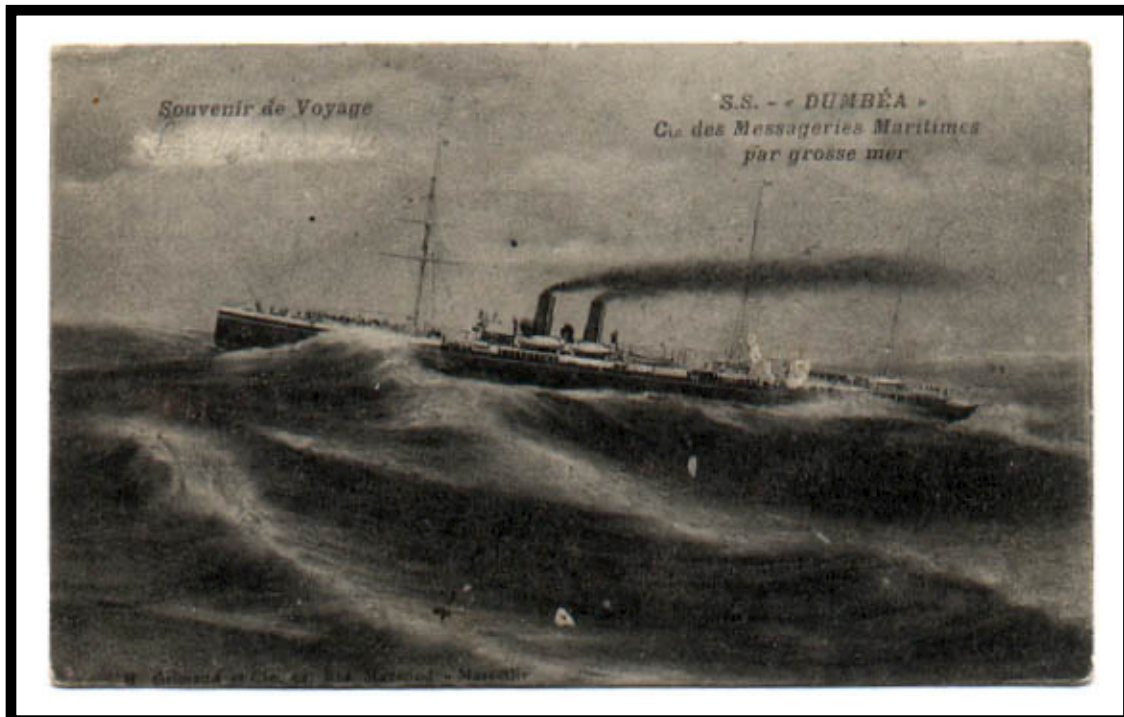
Djemnah

The *Djemnah* was the third of five identical ships constructed at the same time. The group included the *Iraouaddy*, *Anadyr*, *Yang Tse* and *Oxus*. She made 48 trips to the Far East between 1875 and 1891. During World War I, she was torpedoed by a U-boat near Crete and sank with the loss of 548 lives.



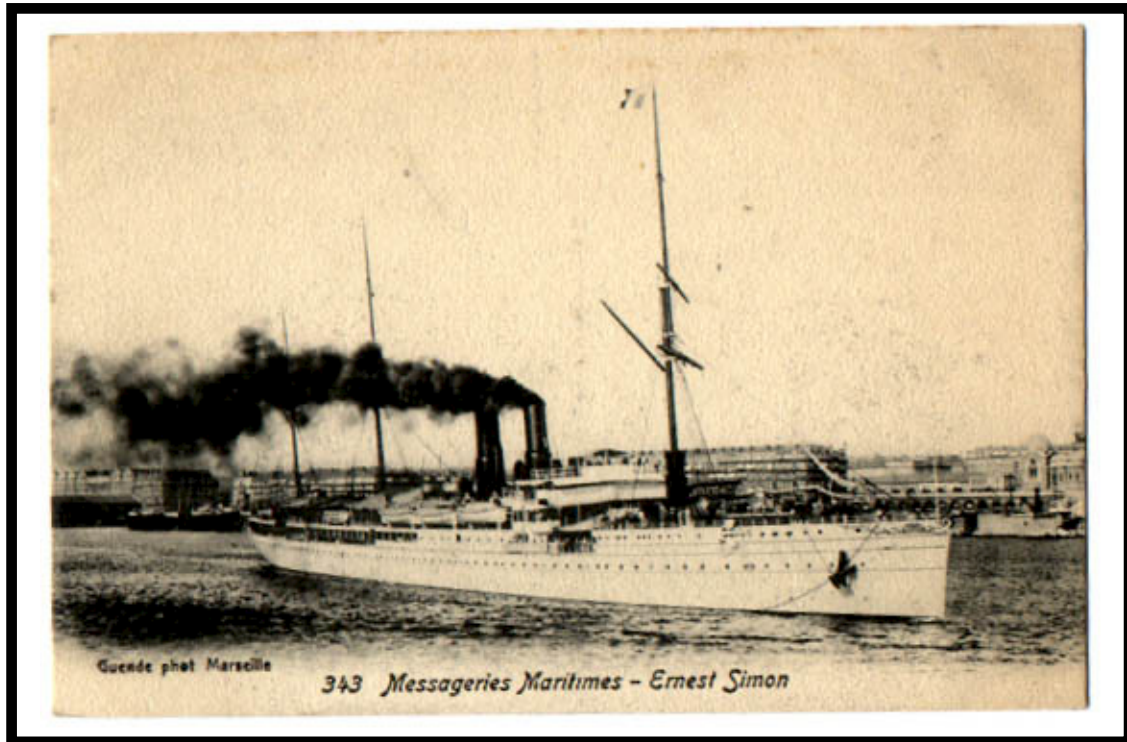
Dumbea

The *Dumbea* started her first voyage to the Far East on 13 November 1904. She made only 12 trips there during 1904-18, an average of one trip per year.



Ernest Simons

Launched on 24 September 1893, the *Ernest Simons* was named after one of the founders of Messageries Maritimes. She made 70 voyages to the Far East.



Ernest Simons

A Messageries Maritimes picture postcard shows "all of Saigon" turning out to greet the *Ernest Simons* when she arrived with the Governor-General.



Explorateur Grandidier

As part of the "Indochina Postal Line," the *Explorateur Grandidier* made 9 Far East trips in 1930-37.



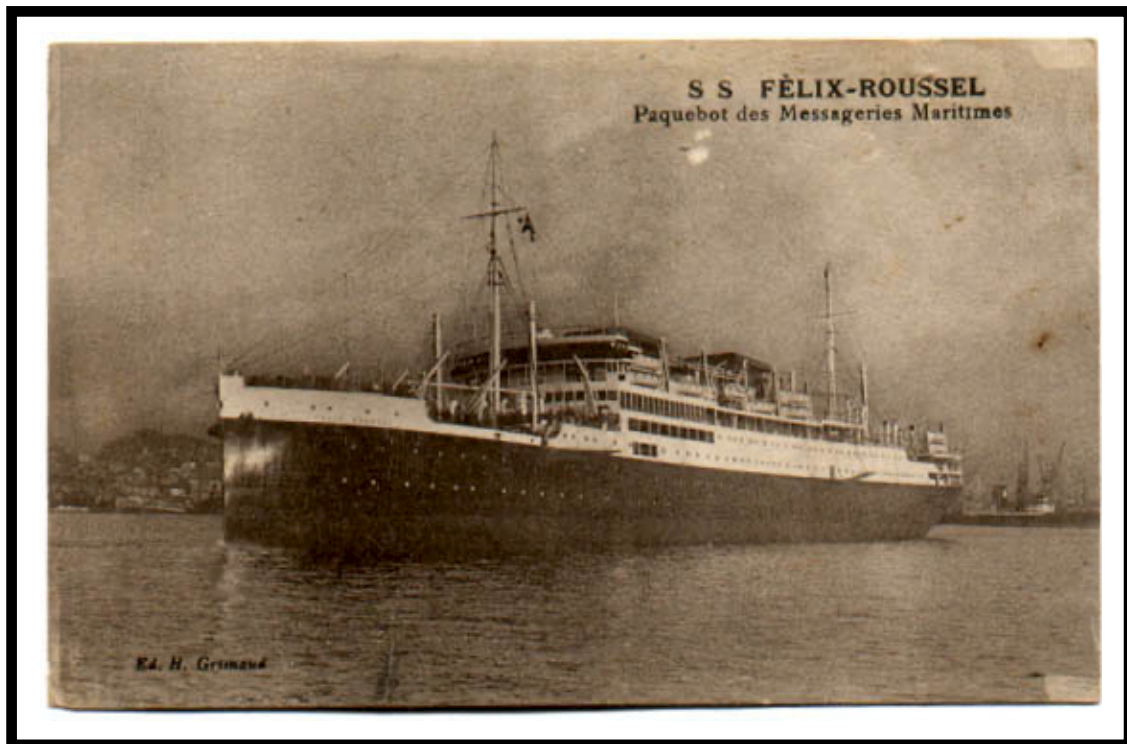
Fai Tsi Long

Based on her overall size, the *Fai Tsi Long* appeared to be a coastal passenger vessel based in Haiphong.



Félix Roussel

The *Félix Roussel* was launched on 17 December 1929. She made 28 Far East voyages during 1931-41.



Fontainebleau

The *Fontainebleau* (formerly the *Islande* operating with Chargeurs Réunis) made only four voyages to the Far East during 1924-6 as part of the “Ligne Postale d’Indo-Chine.”



General Metzinger

The former *Cap Vilano* was awarded to Messageries Maritimes as part of war reparations and was renamed *General Metzinger*. As part of the Messageries Maritimes Line during 1921-31, she made 21 voyages to the Far East. She was bombed and sunk in 1940.



Georges Philippar

Georges Philippar was an ocean liner of the French Messageries Maritimes Line that was built in 1930. On her maiden voyage in 1932 she caught fire and sank in the Gulf of Aden with the loss of 54 lives.

Named after French shipbuilder Georges Philippar, she was built to replace Paul Lacat, which had been destroyed by fire in December 1928. Completed in 1932, she made her first trip to the Far East going as far as Yokohama, Japan. She started her homeward voyage, calling at Shanghai, China and Colombo, Ceylon. *Georges Philippar* left Colombo with 347 crew and 518 passengers aboard. On her return, she experienced two fire alarms, but no fire was found.

On 16 May while the *Georges Philippar* was 145 nautical miles (269 km) off Cape Guardafui, Italian Somaliland, a fire broke out in one of her cabins. There was a delay in reporting the fire, which had spread by the time the captain was made aware of it. He decided to try and beach the ship on the coast of Aden and increased the ship's speed, which only made the fire burn more fiercely. On 19 May, *Georges Philippar* sank in the Gulf of Aden.



Gironde

Serving first in South America, then Madagascar, the *Gironde* became a Saigon-based coastal freighter. The *Gironde* served the ports of Quinhone, Tourane and Haiphong from 1902 to 1908.



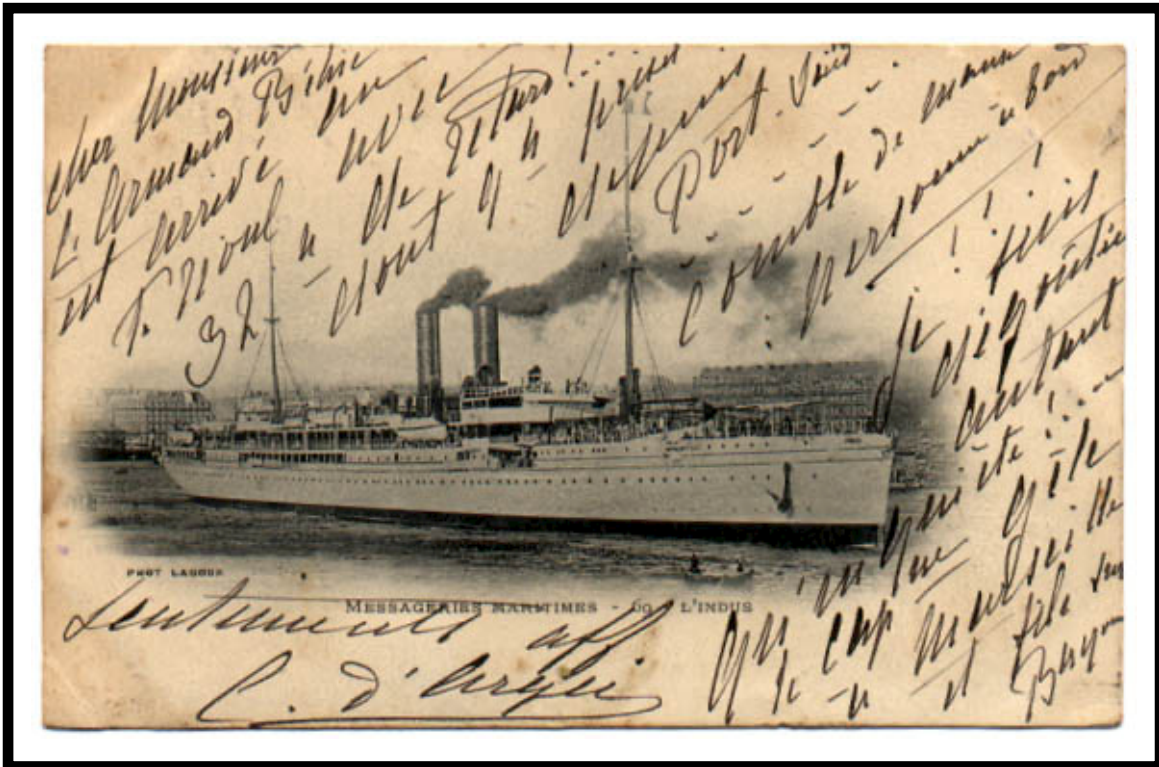
Hong Kong

The *Hong Kong* was a coastal freighter that served with the Haiphong-Hong Kong Line.



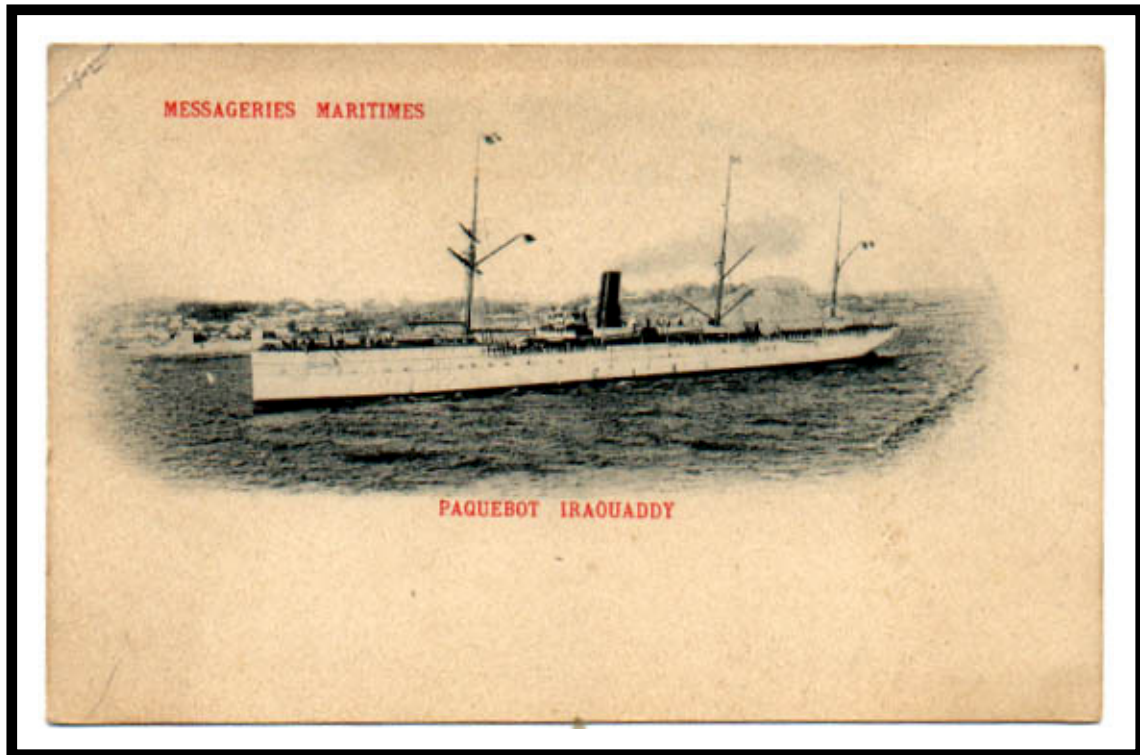
Indus

The *Indus* departed for her first Far East voyage on 13 March 1898. She made 14 trips from 1898-1902. The *Indus* was renamed *Magellan* and moved to the J Line.



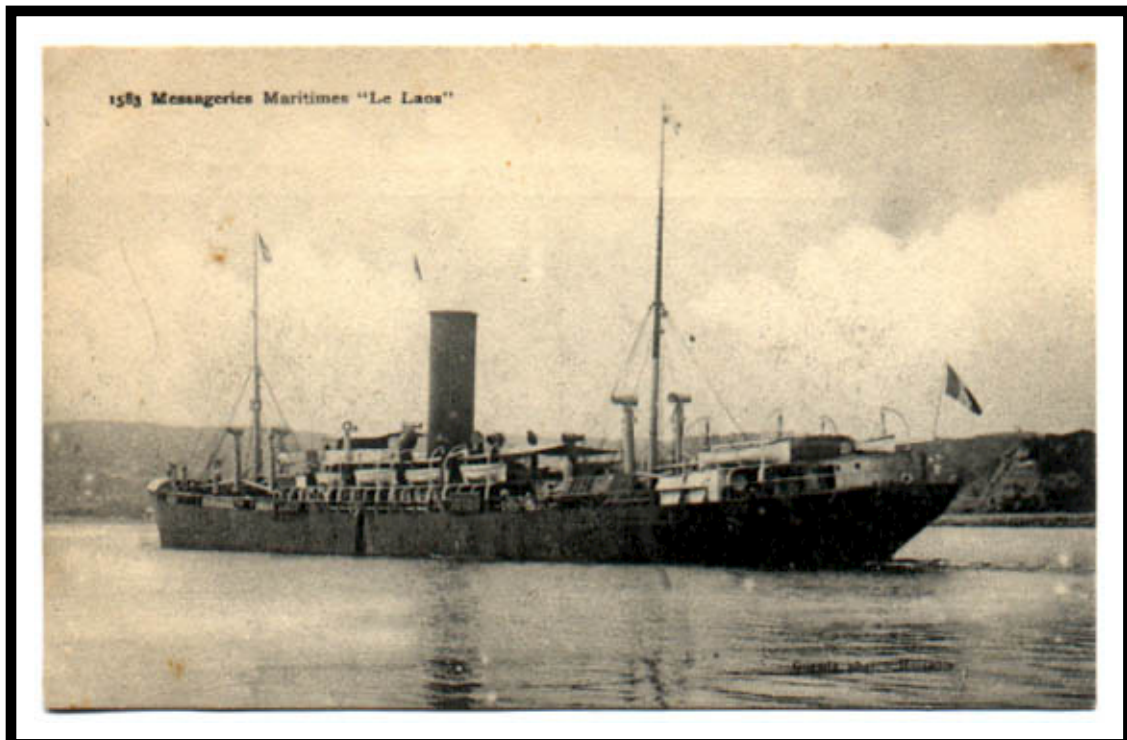
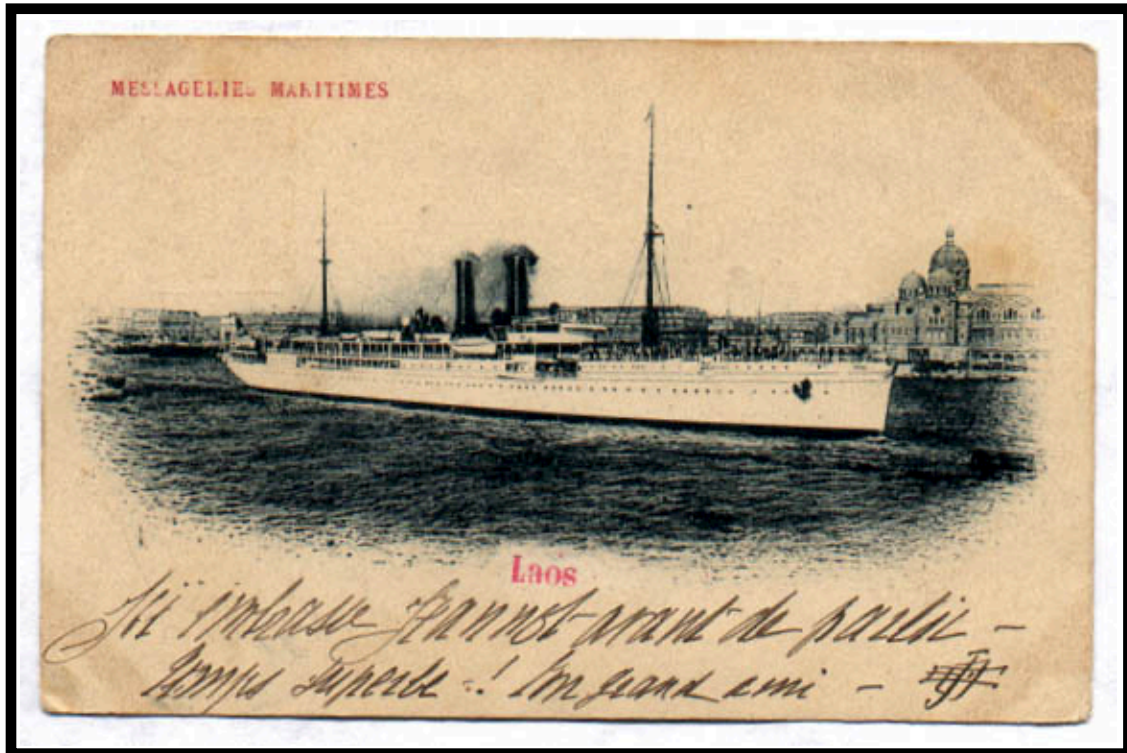
Irraquaddy

Designed to negotiate the Suez Canal, the *Irraquaddy* made her first trip to the Far East on 30 March 1873. She made 51 trips between 1873 and 1890. In 1906, she was converted to an immigrant ship for South America service and renamed *Esmeralda*.



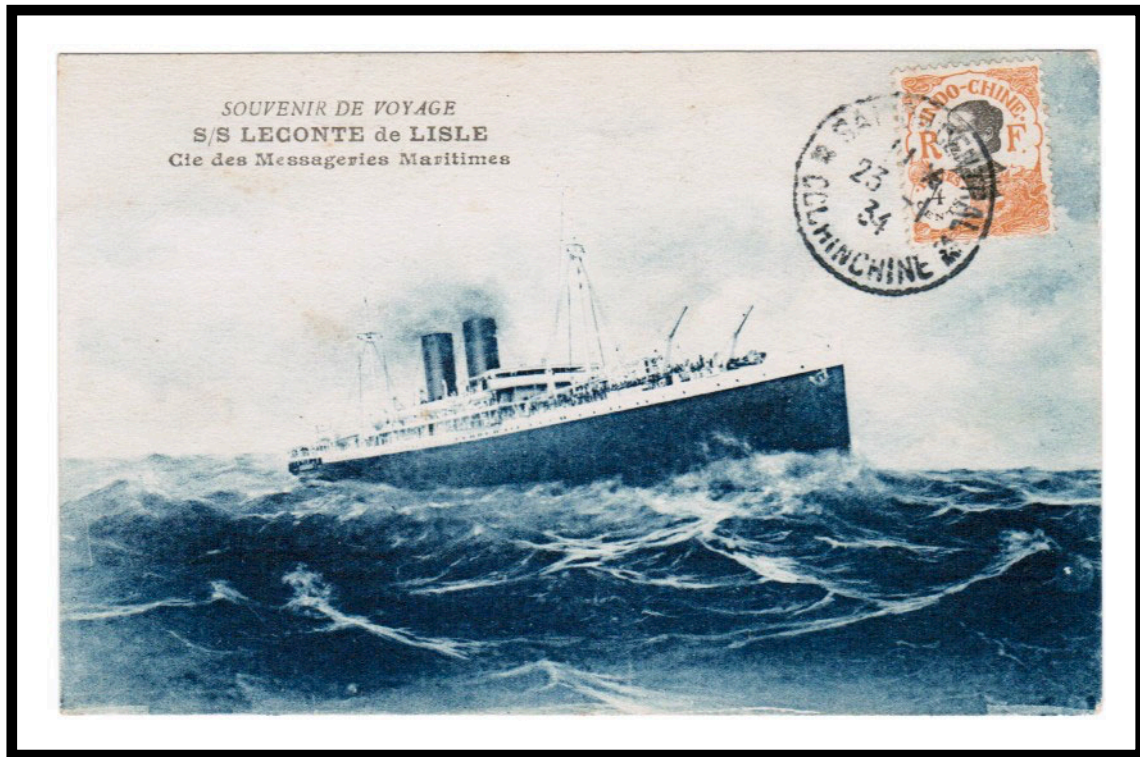
Laos

The *Laos* started her first voyage on 17 July 1897. After completing twelve trips to the Far East from 1897 to 1902, she was moved to the J Line serving South America and renamed "*Amazone*."



Leconte de Lisle

Built in 1922, the *Leconte de Lisle* made nine Far East voyages between 1932 and 1939. The Japanese seized her at Saigon in 1942. In 1944, she sunk after hitting a Japanese mine. Raised in 1948, she returned to France in 1950.



POSTAL MARKINGS

SAIGON-CENTRAL COCHINCHINE 23-1 34

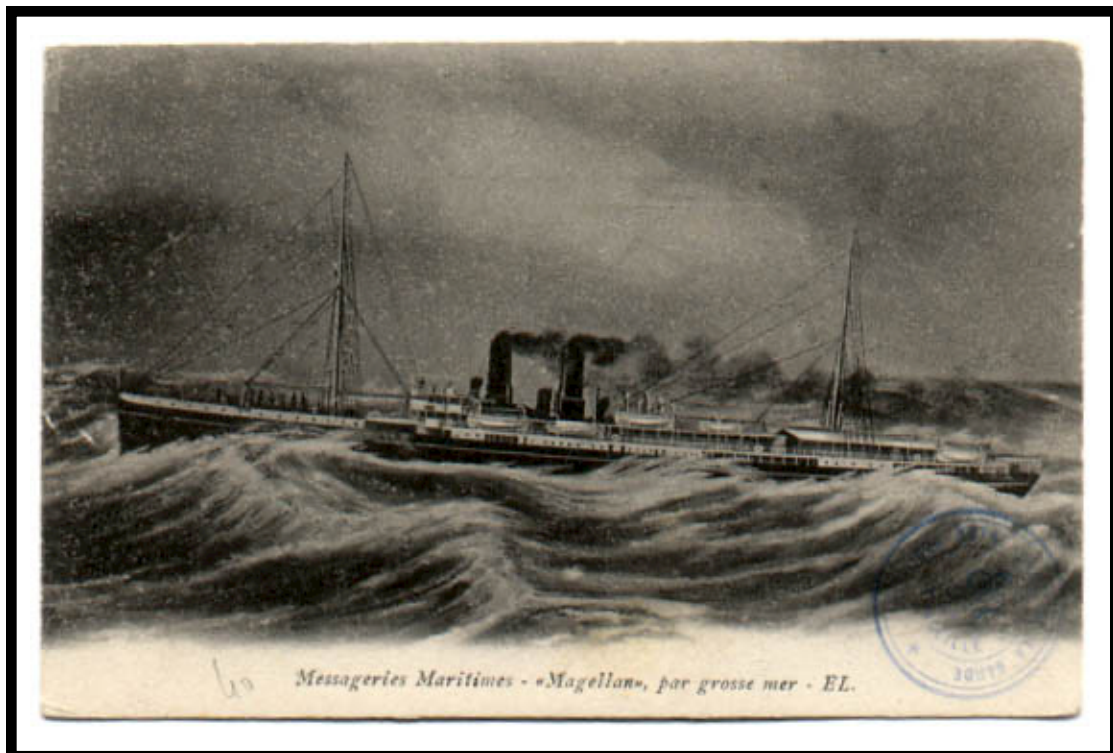
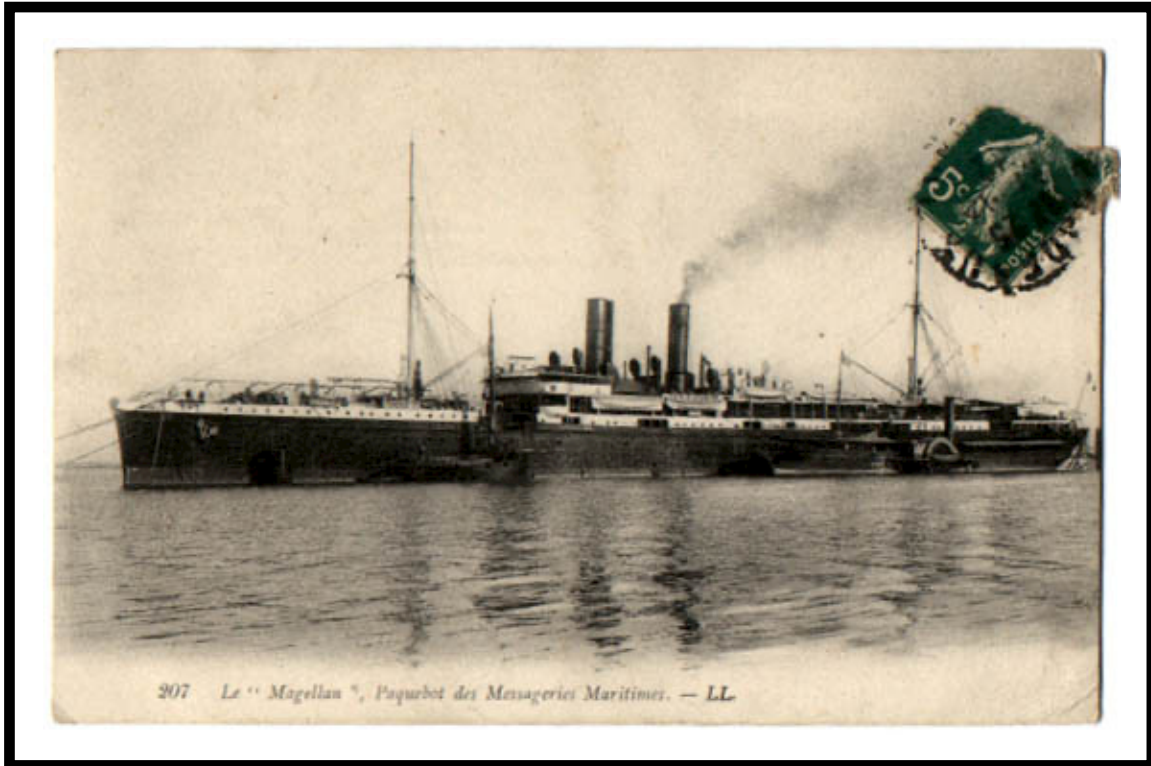
Lotus

Built in 1898 and originally named *Tonkin*, she was reconstructed in 1912 and renamed the *Lotus*. She made 7 Far East trips in 1912-17.



Magellan

The *Magellan* (which had formerly performed Far East service under the name *Indus*) made 11 trips during 1912-16. She was torpedoed on 11 December 1916 with the loss of 36 lives.



Manche

Manche was a cargo ship converted for service in Tonkin, where she served from 1895 through 1914. The *Manche* was scrapped in 1923.



Maréchal Joffre

Built in 1931, the *Maréchal Joffre* made 13 voyages to the Far East during the period 1935-41.



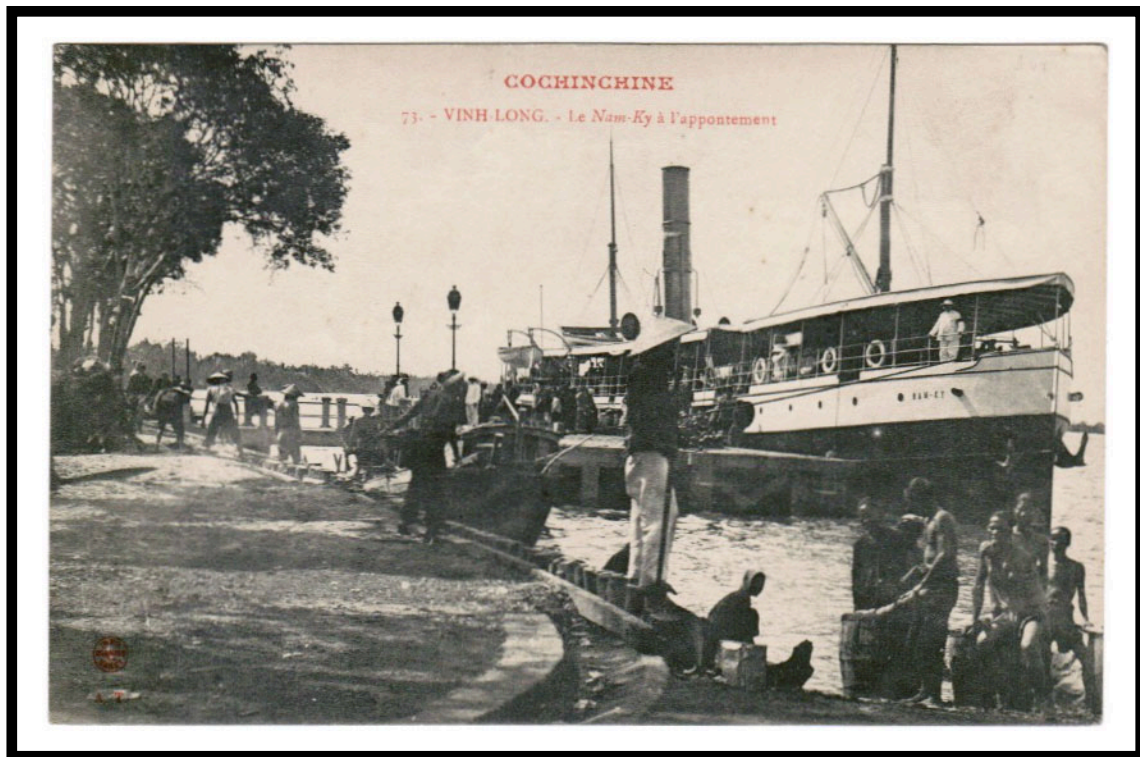
Melbourne

The *Melbourne* left for her first trip to the Far East on 1 February 1888. During the period 1885-1898, she completed 40 voyages to the Far East.



Nam-Ky

The *Nam-Ky*, a smaller ship shown here at the pier in Vinh-Long, sailed local routes along the Mekong River as opposed to transoceanic service.



Natal

On 23 November 1882, the *Natal* was the first French ship to open service on the Marseille-Australia Line. After 3 trips, she was assigned to Far East service and made a total of 42 trips through 1901.



Natal

The *Natal* was first of a class of 126-meter vessels. She made 42 Far East voyages from 1882 to 1901. In 1917, as part of a convoy, the *Natal* collided with the French ship *Malgache* and sank.



POSTAL MARKINGS
MARSEILLE DEPART 24-5 95

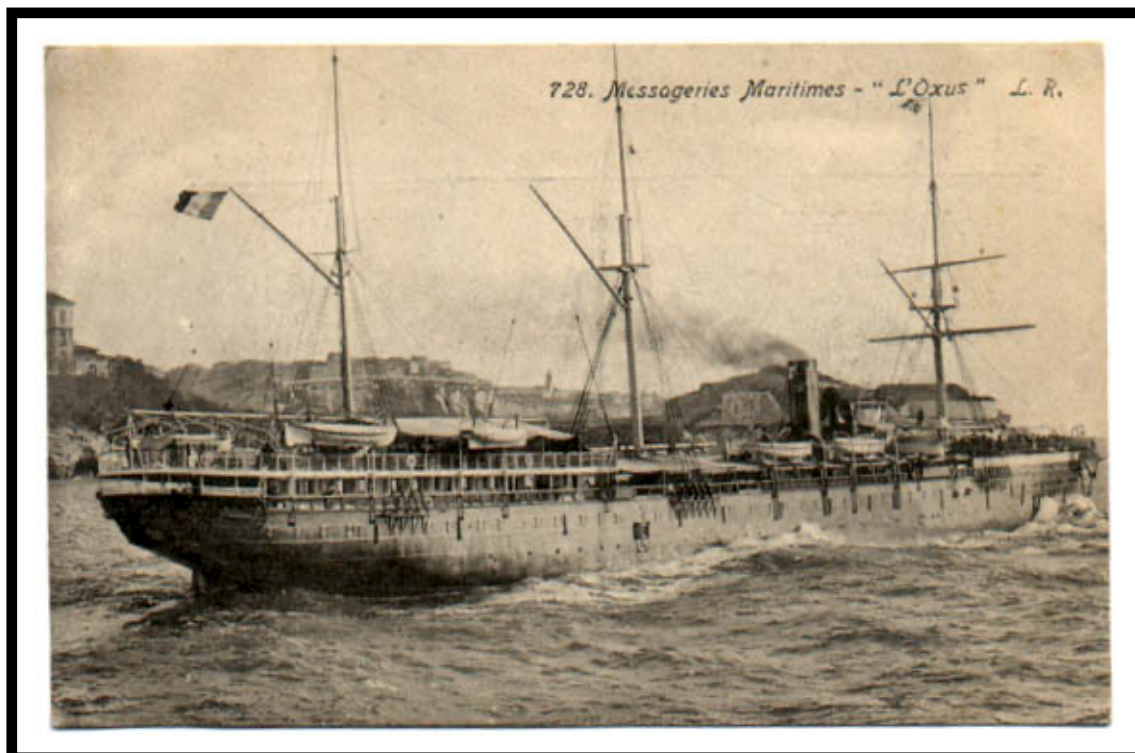
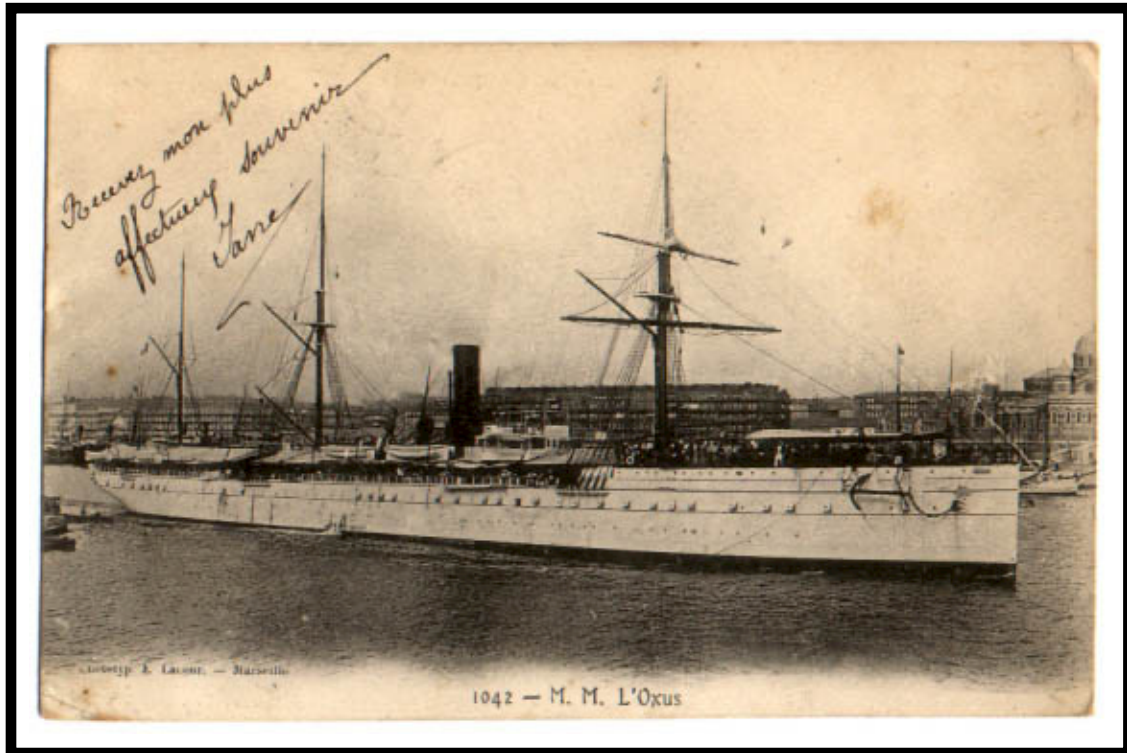
Nera

Launched on 18 June 1888 under the name *La Plata*, the ship was part of the South America Line. In 1903, she was renamed *Nera*. The *Nera* only made three Far East voyages between 1907 and 1909.



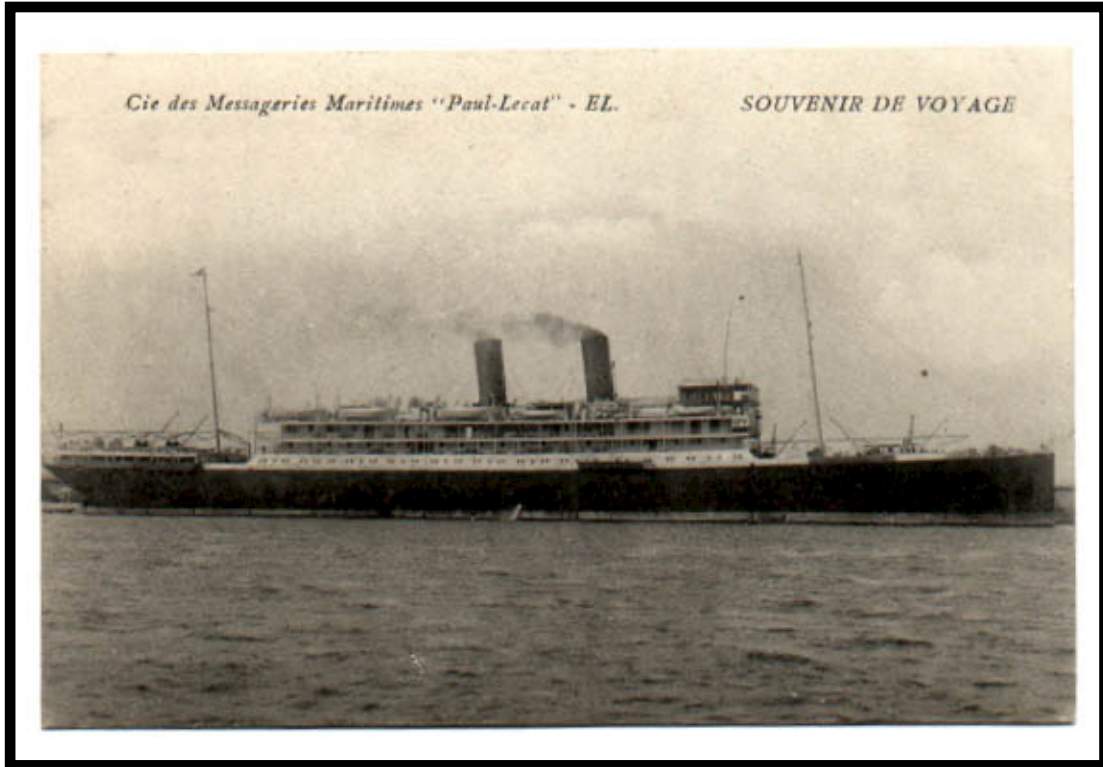
Oxus

The *Oxus* was one of the early packet boats expressly built for the Suez Canal. At 115 meters, she was at the maximum length for the canal's locks. Put into Far East service on 19 October 1879, she completed 46 trips to the Far East from 1879 to 1895.



Paul Lecat

Originally named *Buenos Ayres*, the *Paul Lecat* completed 38 voyages to the Far East from 1912 to 1928. She was destroyed by fire at Marseilles on 23 December 1928.



Paul Lecat

A period postcard shows a view of a Messageries Maritimes cargo ship from the *Paul Lecat* (ex *Buenos Aires*). The *Paul Lecat* made 38 voyages to the Far East between 1912 and 1928. The ship burned at Marseilles on 30 December 1928.



POSTAL MARKINGS on REVERSE
SAIGON-CENTRAL COCHINCHINE 19-7 19

Polynésien

The *Polynésien* served on the T Line between France and Australia as well as on the N Line. She made 40 T Line voyages between 1892 and 1913 and 46 N Line voyages between 1902 and 1917.



POSTAL MARKINGS
THANH-HOA ANNAM 15 JUIN 08

Polynésien

The *Polynésien* made 46 N Line voyages in 1911-17 before she was torpedoed.



Porthos

The *Porthos* made five round trip voyages from France to the Far East in 1936-37.



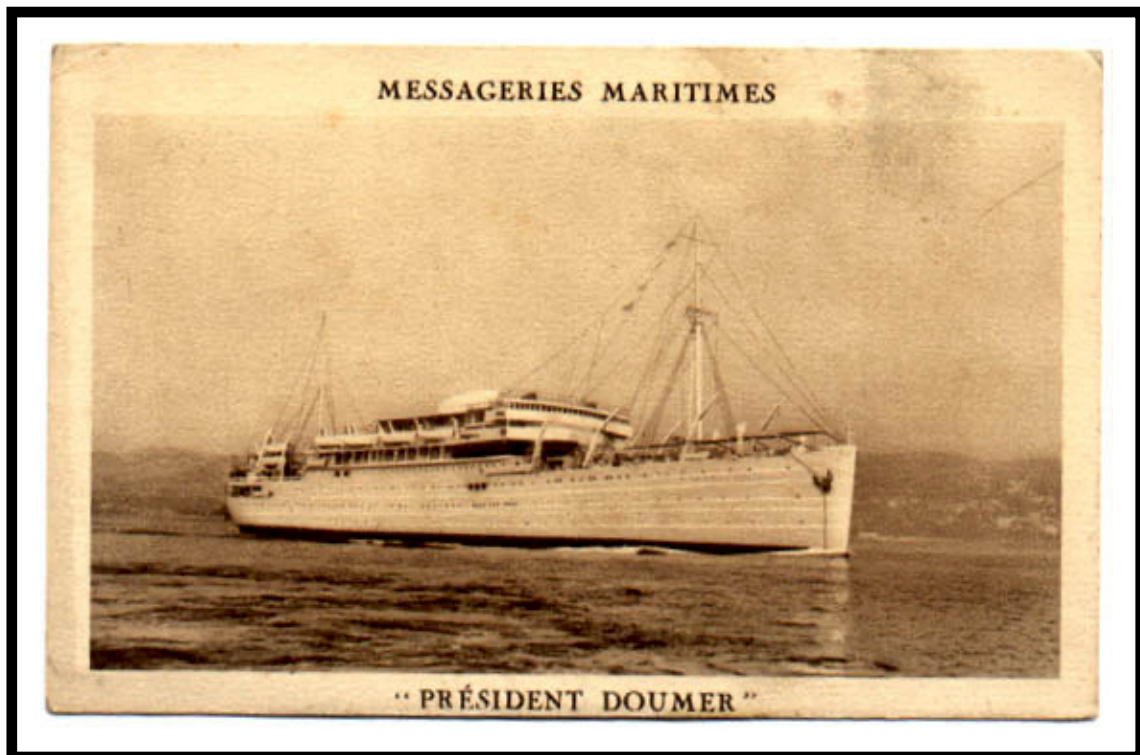
Porthos

At Saigon, a crowd of dignitaries awaits the return of the Empress of Annam from a cruise abroad on the SS *Porthos*.



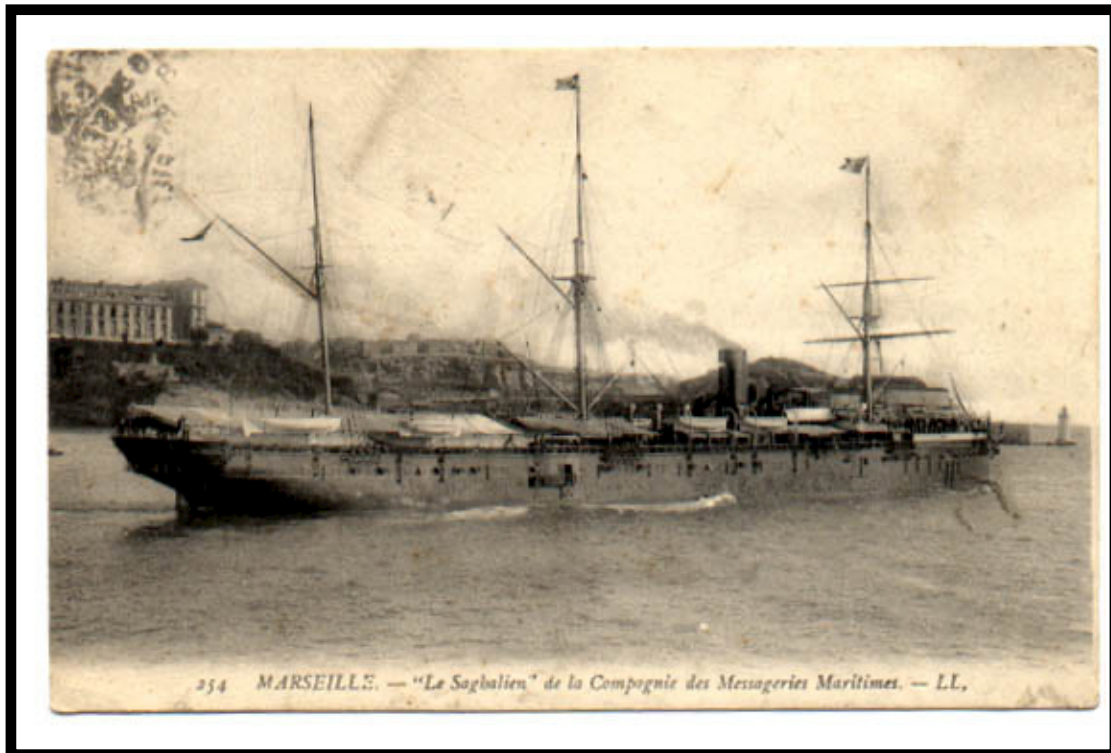
President Doumer

Launched in 1933, the *President Doumer* made 15 Far East voyages between 1935 and 1941. In 1940, she was taken over by the Allies. In 1942, off the coast of Madera, a German submarine torpedoed her and sank her with a loss of 260 lives.



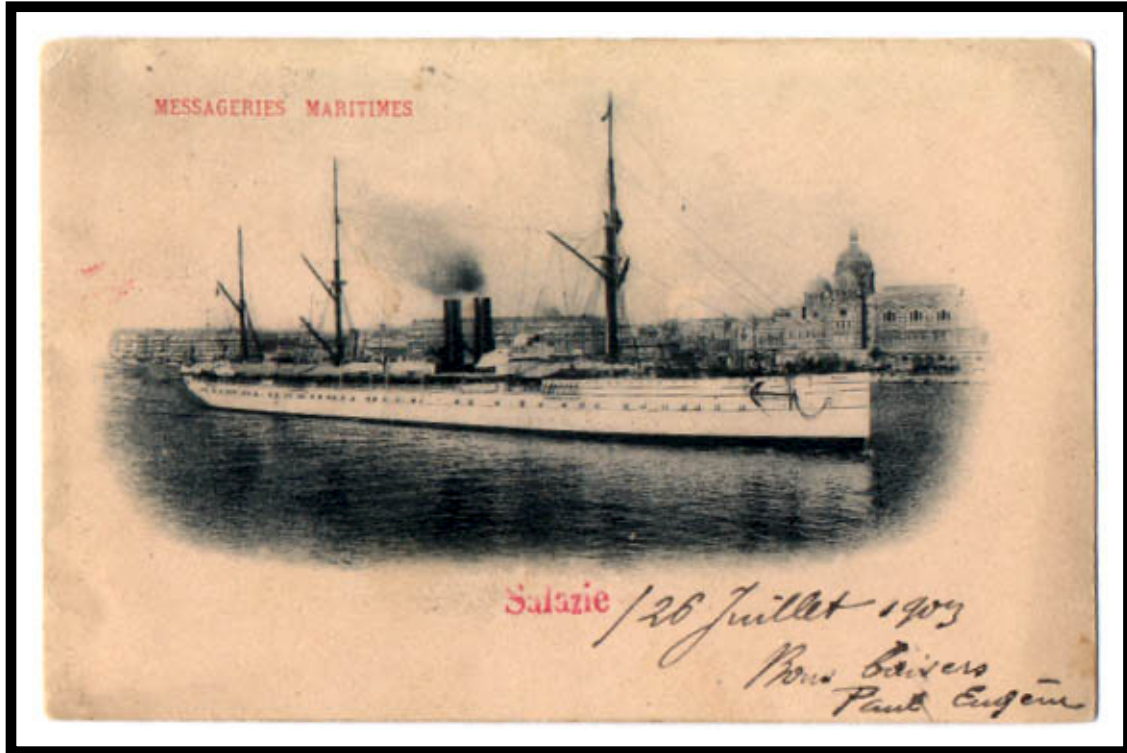
Saghalien

The *Saghalien* was the last of the 115-meter steamers built especially to navigate the Suez Canal. Her first Far East voyage began 23 January 1881. She made 44 trips during the period 1881-1897.



Salazie

The *Salazie* made 50 Far East trips from 1891 to 1910. On 24 November 1912, she wrecked off the coast of Madagascar during a cyclone.



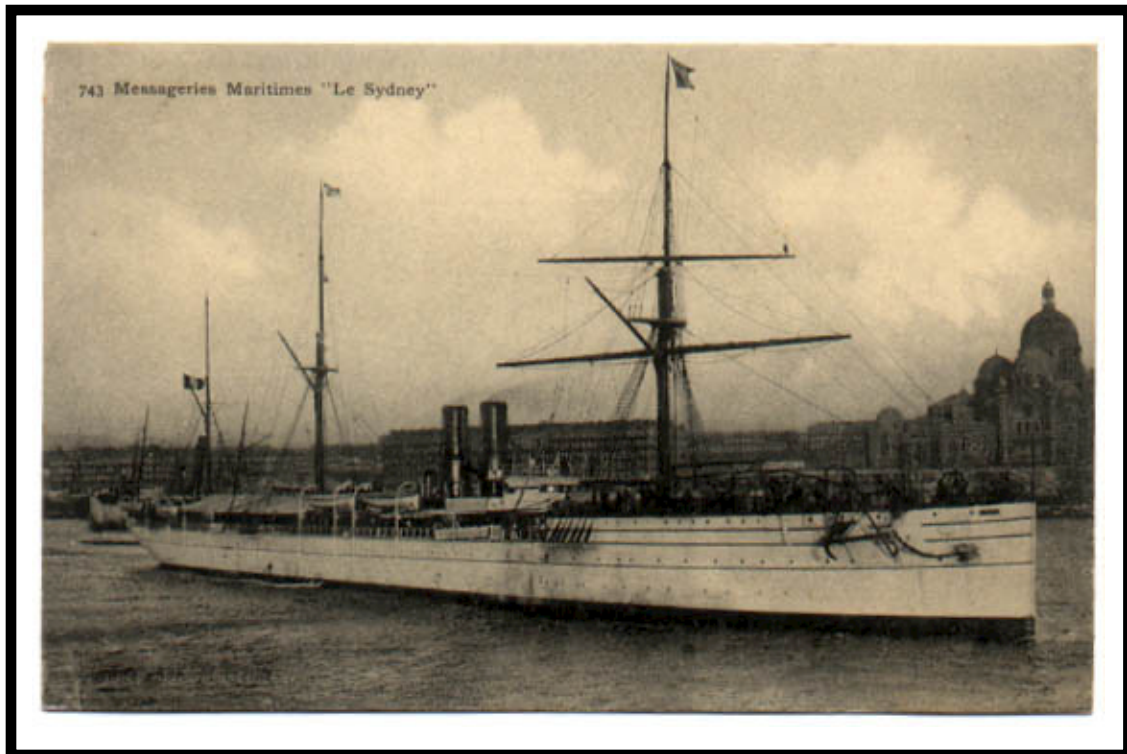
Sphinx

The *Sphinx* was constructed in 1915 and served as a hospital ship during World War I. From 1915-1945, she made 41 Far East voyages for Messageries Maritimes.



Sydney

One of a group of seven 126-meter ships constructed for Messageries Maritimes, the *Sydney* started her service on 13 July 1890. During 1892-1910, she completed 44 voyages to the Far East.



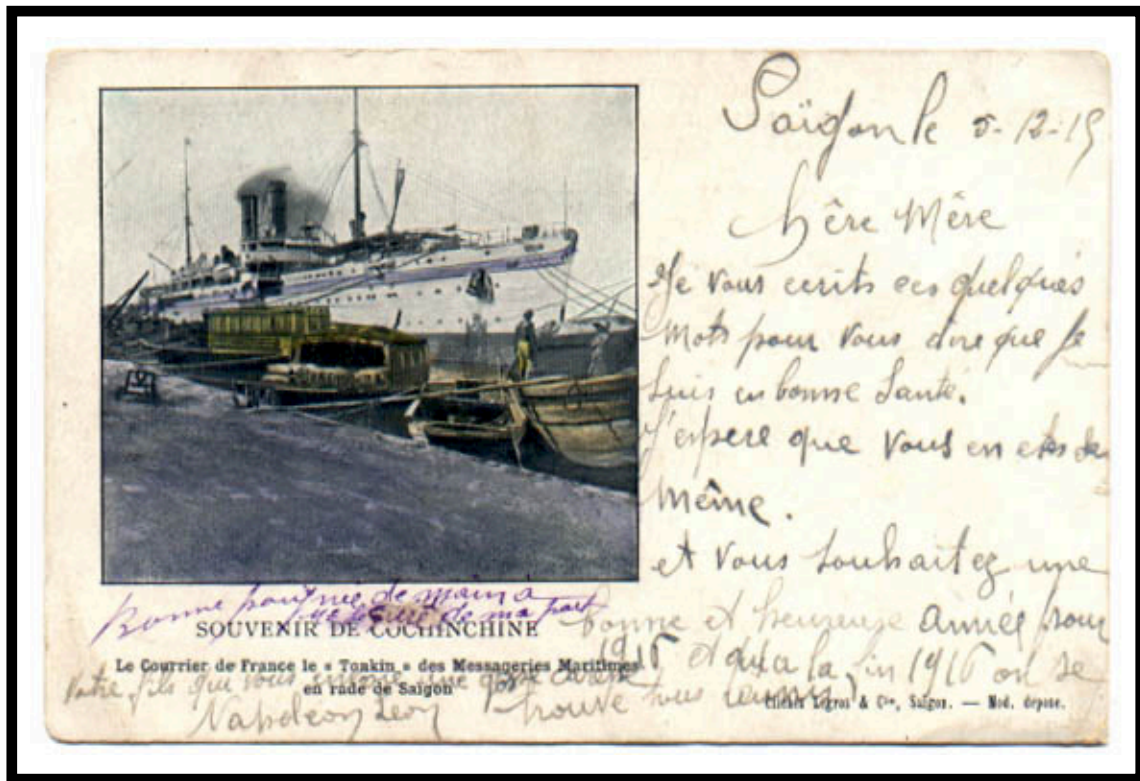
Tiger

A riverboat named "Tigre" is depicted on period postcards. Based on the postcard captions she was associated with "Messageries Fluviales."



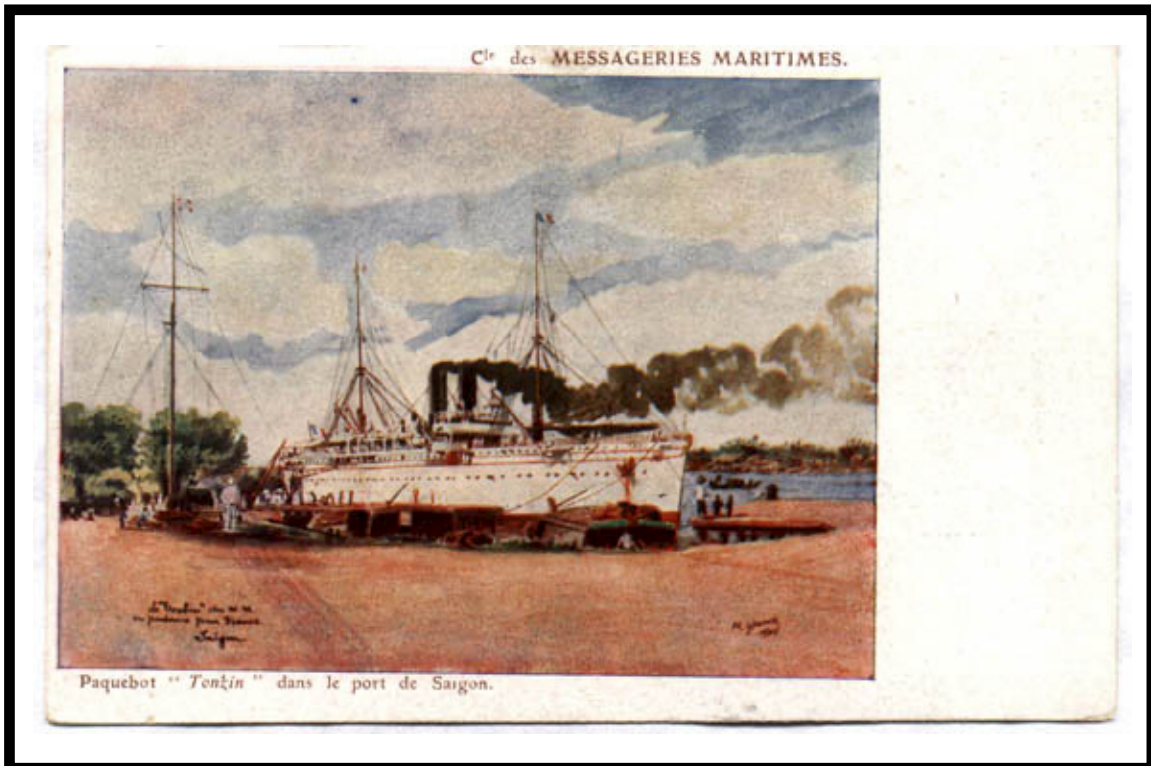
Tonkin

A postcard depicting Messageries Maritimes's *Tonkin* at the pier is datelined at Saigon on 5 December 1919. The *Tonkin* served the Far East Line from 1898 to 1917 and had been out of service for two years when the note was penned on the postcard.



Tonkin

The SS *Tonkin* was in service from 1898 to 1917. Her first voyage began on 18 December 1898 and the ship made 38 trips to the Far East.



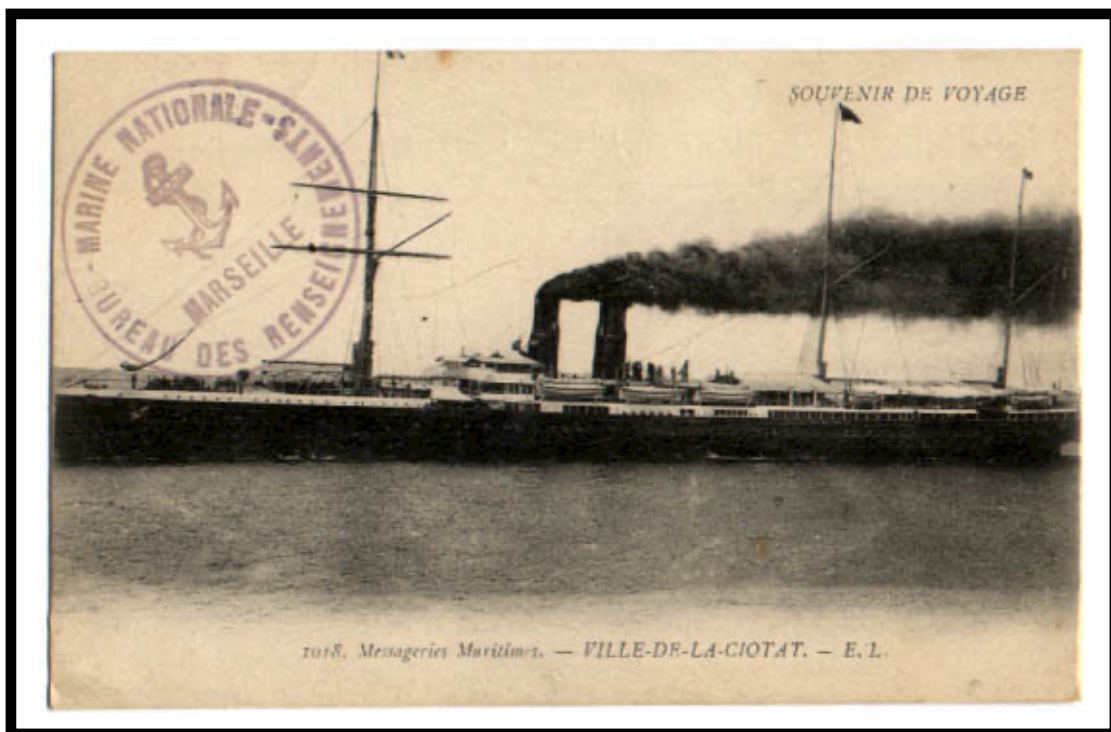
Tourane

Named *Annam*, this ship made 14 Far East trips during 1899-1904. Renamed *Tourane*, she made another 25 voyages during 1904-12. Modernized in 1912, she took the name *Karnak*. On 27 November 1916, a German submarine torpedoed her. Seventeen lives were lost.



Ville de la Ciotat

Launched 10 April 1882, the *Ville de la Ciotat* was the sister ship to the *Armand Behic*. She made only 4 Far East voyages from 1907 to 1910. On 24 December 1915, a German U-boat torpedoed her near Crete.



Yarra

The *Yarra* was launched on 12 August 1883. She served the Far East Line as well as the Australian Line from 1895 to 1905. On 29 May 1917, the *Yarra* was torpedoed and sunk near Crete.

