

Far East Lines 1911-41

Starting in January 1911, the structure of French maritime transport changed to a new system. Lines were no longer referred to by a letter designation, but rather by a general geographic reference. The Cie des Messageries Maritimes remained in control of the Far East Line. Operations were carried out in accordance with:

Convention of 11 July 1911 (Law of 30 December 1911)

Convention of 29 December 1920 (Law of 28 July 1921).

The essential mandate for operations was to have regular departures from Marseilles every 14 days.

New postmarks were introduced that reflected the termini of the line. They were called, along with their periods of operation:

Marseille – Yokohama Line	1911-32
Marseille – Shanghai Line	November 1932 - December 1933
Marseille – Kobe Line	December 1933 – end of 1939
Marseille – Madagascar Line	1940-41

Each ship had a postal agent on board who used numbered handstamps to mark the mail. Instead of the 10 numbered postmarks that had existed on the N Line, the new arrangement began with only 8 devices. This number of devices was sufficient until disruptions and losses in World War I necessitated an increase to 10 numbered devices.



MARSEILLE A YOKOHAMA N° 1

In 1911, there was a wholesale replacement of the existing postmarks. Both circular and octagonal formats with wording that indicated the direction of the voyage were employed.

This mailing, which used Messageries Maritimes company stationery, was posted aboard the *Paul Lecat* on her outbound voyage. She had departed Marseilles on 21 October 1927.



POSTMARK TYPE: 2.021/1
PERIOD OF USE: 1911-32



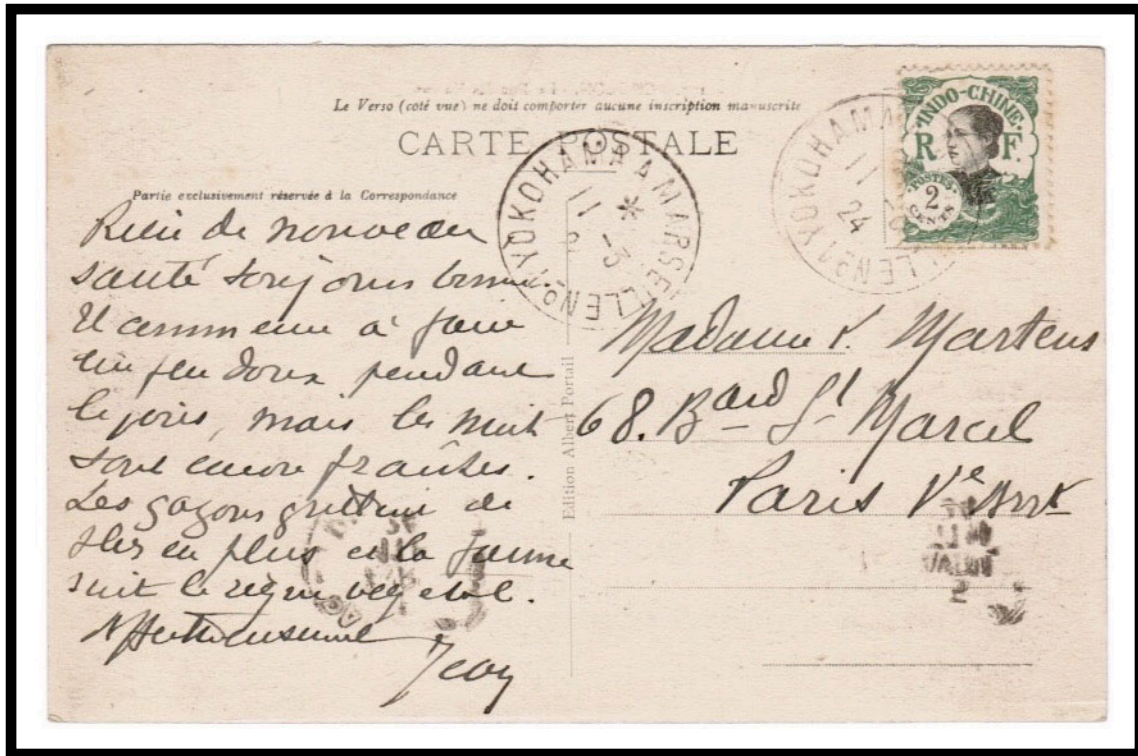
POSTAL MARKINGS
MARSEILLE A YOKOHAMA N° 1 7-11 27

YOKOHAMA A MARSEILLE N° 1

The "No 1" postmark was circular. It remained in service from 1911 until 1932. Here a 2-cent stamp from the Local Currency Native Women issue paid the postcard rate to France. The fact that the postmark cancels the stamp indicates that the postcard was posted aboard ship rather than a regular post office on land. The *Angers* was the vessel that transported this card to France early in 1924.



POSTMARK TYPE: 2.022/1
PERIOD OF USE: 1911-32



POSTAL MARKINGS

YOKOHAMA A MARSEILLE N° 1 11-3 24

YOKOHAMA A MARSEILLE N° 1

A picture postcard franked with a 4-cent Local Currency Native Woman stamp was mailed aboard the *Athos II* on the day she departed Saigon for her return journey to Europe. The original *Athos* was torpedoed in the Mediterranean during World War I.



POSTMARK TYPE: 2.022/1
PERIOD OF USE: 1911-32



POSTAL MARKINGS

YOKOHAMA A MARSEILLE N° 1 13-7 31

YOKOHAMA A MARSEILLE N° 1

Postal agents were able to accept and process registered mail as indicated by the mailing posted on the *Chenonceaux* during her return voyage from the Far East at the end of 1930. Sent by the French Consulate office in Colombo, Ceylon, the letter was addressed to a gardening magazine in Paris.



POSTMARK TYPE: 2.022/1
PERIOD OF USE: 1911-32

YOKOHAMA A MARSEILLE

POSTMARK TYPE: 2.034
PERIOD OF USE: 1919-32



POSTAL MARKINGS

YOKOHAMA A MARSEILLE N° 1 25-11 30
registration label with straight-line YOKOHAMA A MARSEILLE handstamp
"2" in blue crayon

MARSEILLE A YOKOAMA N° 2

A picture postcard depicting the market in Singapore was mailed to France aboard the *André Lebon* during the outbound leg of her voyage to the Far East. Since August 1926, France's internal postcard rate was only 25 centimes when the message did not exceed five words.



POSTMARK TYPE: 2.023/2
PERIOD OF USE: 1911-32



POSTAL MARKINGS

MARSEILLE A YOKOAMA N° 2 27-11 27

MARSEILLE A YOKOAMA N° 2

This letter to Avignon was sent using Messageries Maritimes company stationery made available to ship's passengers. The letter was mailed in October 1912 on the *Australien* of the outbound part of her trip to the Far East.



POSTMARK TYPE: 2.023/2
PERIOD OF USE: 1911-32



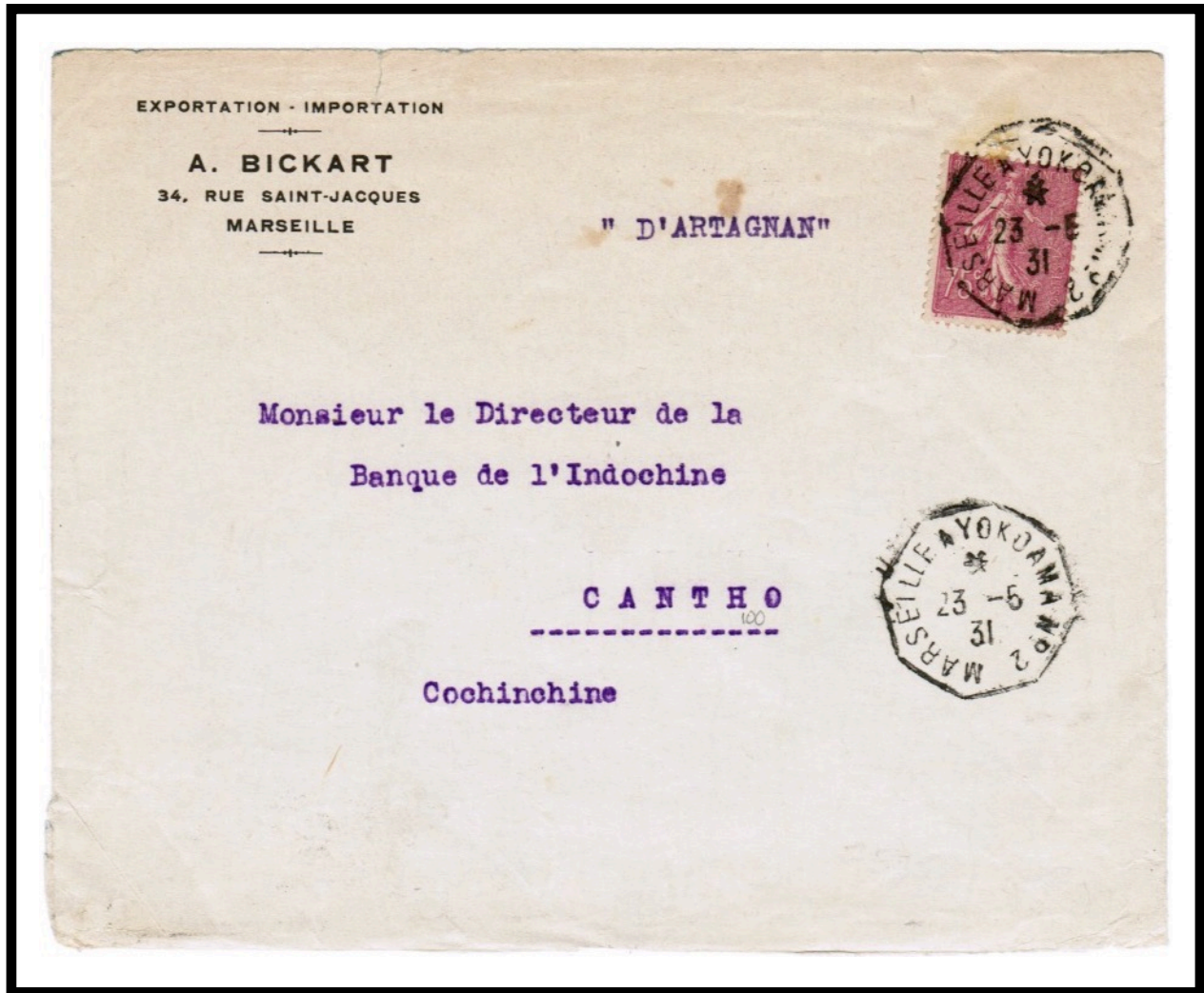
POSTAL MARKINGS
MARSEILLE A YOKOAMA N° 2 22-10 12
REVERSE
AVIGNON VAUCLUSE 8-11 12

MARSEILLE A YOKOAMA N° 2

Addressed to Cantho, Cochinchina, this letter was posted on the *D'Artagnan* one day after she had departed Marseille on 22 May 1931.



POSTMARK TYPE: 2.023/2
PERIOD OF USE: 1911-32



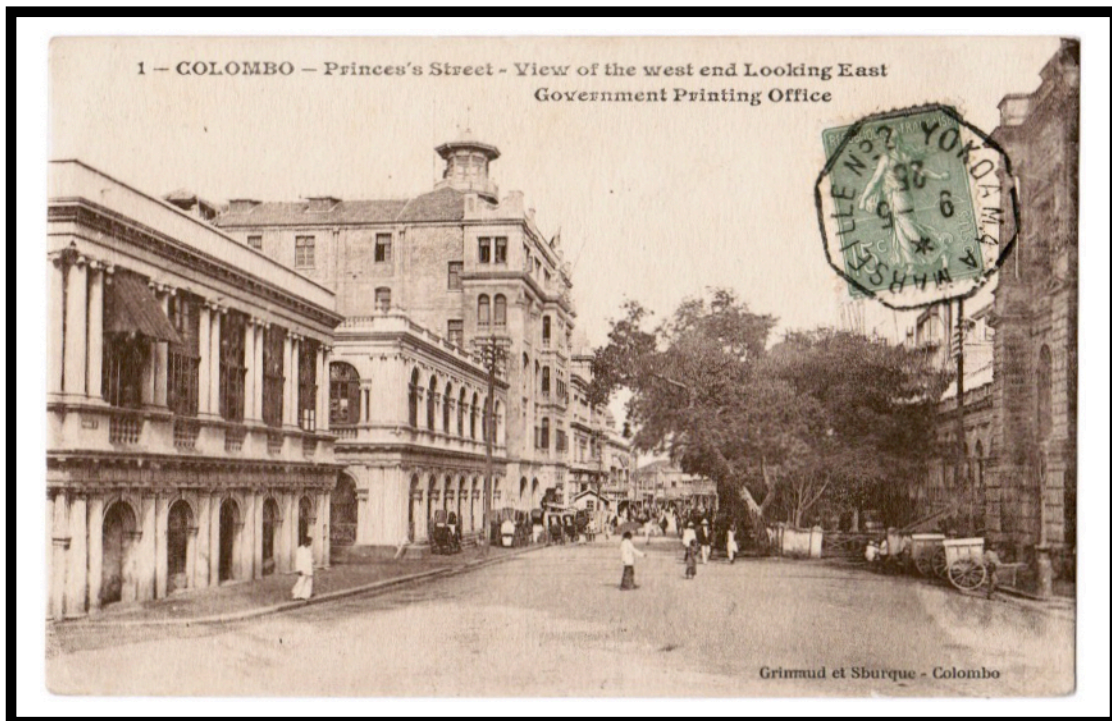
POSTAL MARKINGS
MARSEILLE A YOKOAMA N° 2 23-5 31
REVERSE
CANTHO COCHINCHINE 17-6 31

YOKOAMA A MARSEILLE N° 2

A picture postcard mailed depicting a street scene in Colombo, Ceylon was addressed to Haiphong, Tonkin in May 1925. Franked with a 15-centime French Sower stamp, the card was mailed on the *Paul Lecat* during her return voyage to France. The card was likely held at Colombo to await a westbound ship to Indochina



POSTMARK TYPE: 2.024/2
PERIOD OF USE: 1911-32



POSTAL MARKINGS
YOKOAMA A MARSEILLE N° 2 9-5 25

YOKOAMA A MARSEILLE N° 2

This voyage of the *Atlantique* deviated from the norm in that the ship stopped at Hong Kong without proceeding further to Shanghai. For her return trip to Europe, the ship left Hong Kong on 4 November and departed Saigon on 7 November 1913. This picture postcard, addressed to Switzerland and franked with a 10-centime Native Woman stamp, was mailed on board the day after the *Atlantique* had left Saigon.



POSTMARK TYPE: 2.024/2
PERIOD OF USE: 1911-32



POSTAL MARKINGS
YOKOAMA A MARSEILLE N° 2 8-11 13

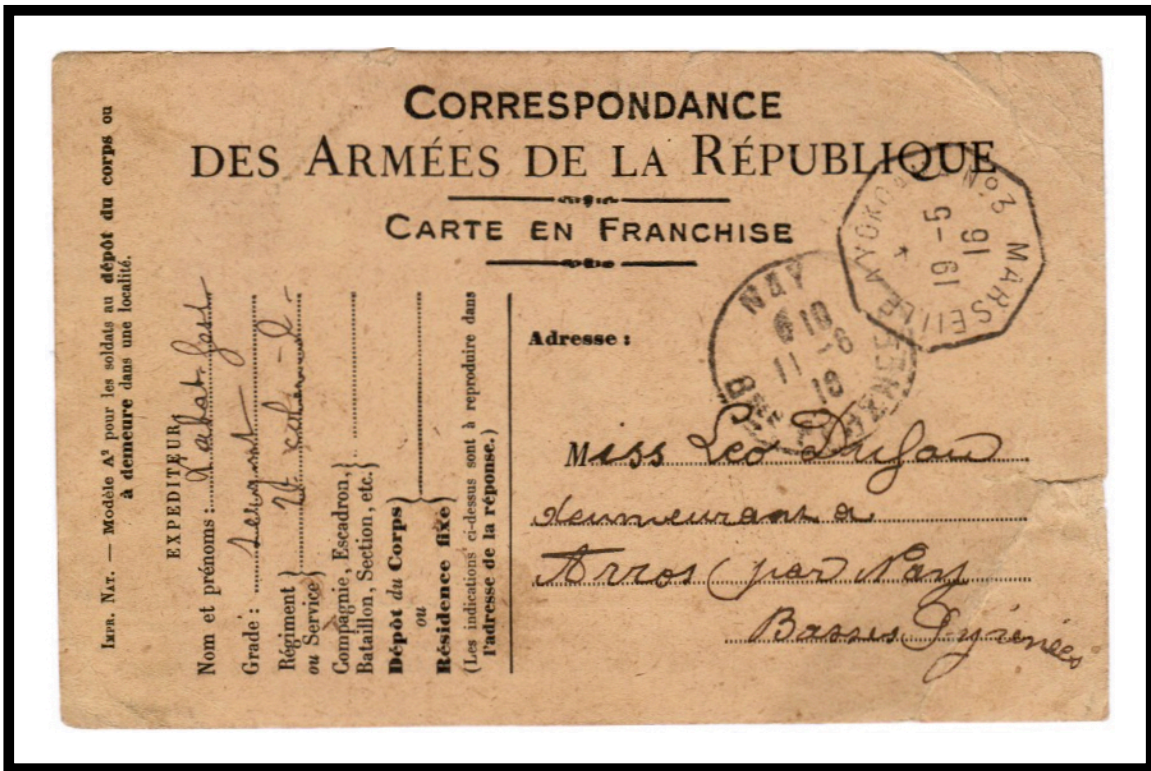
MARSEILLE A YOKOAMA N° 3

A free franchise military message card was posted on the *Magellan* during her eastward journey to the Far East. At one of the ship's stops, the card had to reverse direction toward France.

On her next trip, she was part of a convoy crossing the Mediterranean. The *Magellan* was torpedoed and sank within two hours on 11 December 1916.



POSTMARK TYPE: 2.023/3
PERIOD OF USE: 1911-16



POSTAL MARKINGS

MARSEILLE A YOKOAMA N° 3 19-5 16
NAY B^{SEE} PYRENEES 11-6 16

YOKOAMA A MARSEILLE N° 3

Here a 25-centime Native Woman stamp paid the foreign letter rate for a mailing to India posted aboard the *Atlantique* in 1913. The letter was postmarked on the day that the *Atlantique* departed Saigon on her way west.



POSTMARK TYPE: 2.024/3
PERIOD OF USE: 1911-16



POSTAL MARKINGS

YOKOAMA A MARSEILLE N° 3 12-4 13

REVERSE

TUITCORIN 20 AP 13
KOTTAIYUR 22 APR.13

MARSEILLE A YOKOHAMA N° 3

A picture postcard depicting Ferdinand de Lesseps, and the Suez Canal was mailed aboard the *Amazone*. The postcard is datelined "Port Said 29.2." Postmarked on 2 March, the card was likely mailed within a few days of transiting the canal.

Postmark 2.027/3 was a replacement for the original number 3 postmark which was lost when the *Magellan* was torpedoed in the Mediterranean on 11 December 1916.



POSTMARK TYPE: 2.027/3
PERIOD OF USE: 1917-32



POSTAL MARKINGS

MARSEILLE A YOKOHAMA N° 3 2-3 22
LE MANS SARTHE 10 • III 1922

MARSEILLE A YOKOHAMA N° 3

Addressed to Marseilles, this picture postcard showing a Saigon scene is datelined "13 juillet 1927, Saigon." The *Amazone* did not depart Saigon for some three weeks until 2 August and arrived at Marseille on 17 September 1927.



POSTMARK TYPE: 2.027/3
PERIOD OF USE: 1917-32



POSTAL MARKINGS

MARSEILLE A YOKOHAMA N° 3 2-8 27

YOKOHAMA A MARSEILLE N° 3

A picture postcard depicting a Japanese temple in Yokohama was datelined 7 August 1927. The *Amazon* departed Yokohama on the same day starting her return trip to Europe. The card was not postmarked until a few days later on the 12th of August.



POSTMARK TYPE: 2.028/3
PERIOD OF USE: 1917-32



POSTAL MARKINGS

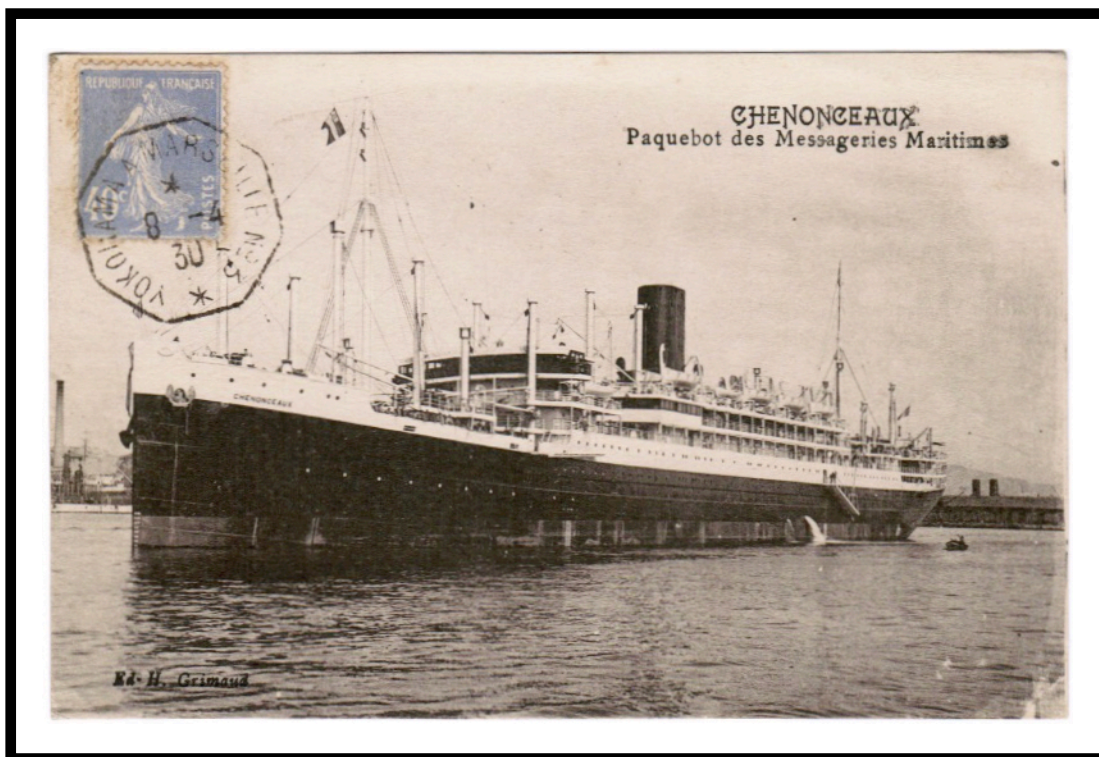
YOKOHAMA A MARSEILLE N° 3 12-8 27

YOKOAMA A MARSEILLE N° 3

The sender selected a postcard showing the *Chenonceaux* for his mailing addressed to Laokay, Tonkin. The card was posted a few days after the *Chenonceaux* had left Saigon on 1 April 1930.



POSTMARK TYPE: 2.028/3
PERIOD OF USE: 1917-32



POSTAL MARKINGS

YOKOHAMA A MARSEILLE N° 3 22-9 38

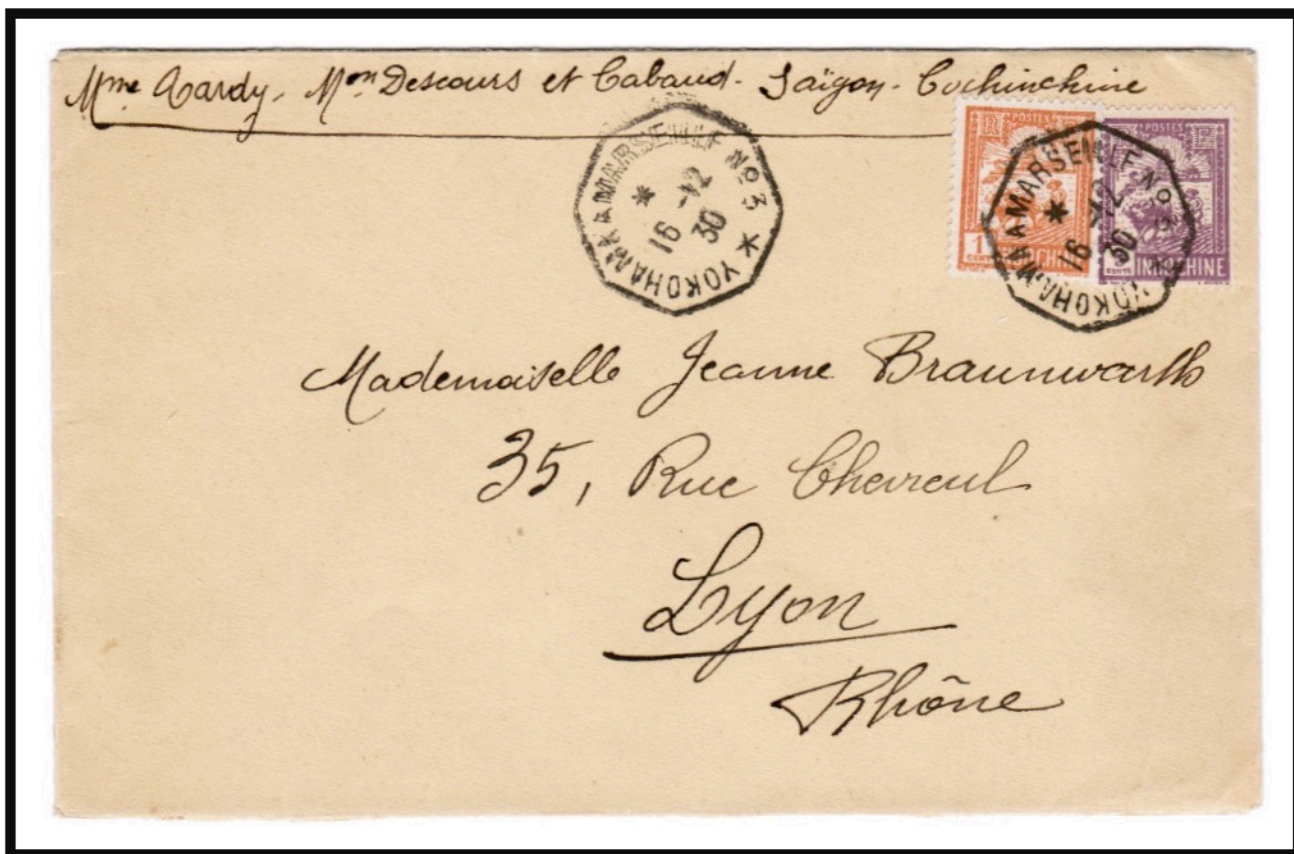
YOKOHAMA A MARSEILLE N° 3

Replacement number 3 postmarking devices were created for both voyage directions after the torpedo attack sank the *Magellan* in 1917. The new postmarks remained in service for a decade and a half.

A letter addressed to Lyon was postmarked on the *D'Artagnan* the day she departed Saigon for her return trip to Europe. She arrived at Marseille on 9 January 1931.



POSTMARK TYPE: 2.028/3
PERIOD OF USE: 1917-32



POSTAL MARKINGS

YOKOHAMA A MARSEILLE N° 3 16-12 30

YOKOHAMA A MARSEILLE N° 3

The last year of use for the number 3 postmark with an asterisk at the base was in 1932.

Here a picture postcard franked with a 4-cent Local Currency Native Woman stamp and addressed to France was postmarked aboard the *André Lebon* on 11 July 1931, the day she left Saigon for her return trip to Europe.

Leaving Djibouti, she collected many survivors of the fire on the *George Philippar* and transported them to Aden.



POSTMARK TYPE: 2.028/3
PERIOD OF USE: 1917-32



POSTAL MARKINGS
YOKOHAMA A MARSEILLE N° 3 1-7 32

MARSEILLE A YOKOAMA N° 4

This picture postcard of Hong Kong Harbor was mailed aboard the *Calédonien* during her westward voyage to Yokohama. The card is addressed to Marseilles, where the ship had left on 3 November 1912.



POSTMARK TYPE: 2.023/4
PERIOD OF USE: 1911-15



POSTAL MARKINGS

MARSEILLE A YOKOAMA A N° 4 9-12 12

YOKOAMA A MARSEILLE N° 4
First Voyage

This picture postcard, datelined on the reverse "Saigon 3 Mars 11" was posted on the *Salazie* on the first voyage of the Marseille-Yokohama Line. The ship left Saigon on 3 March 1911 to begin her eastward journey to Europe.

The postcard depicts a woman from Tonkin wearing a large hat was franked with a 5-centime Native Woman stamp for a card with a message of no more than five words.



POSTMARK TYPE: 2.024/4
PERIOD OF USE: 1911-15

POSTAL MARKINGS
YOKOAMA A MARSEILLE N° 4 3-3 11
REVERSE
SINGAPORE 6 MR 1911

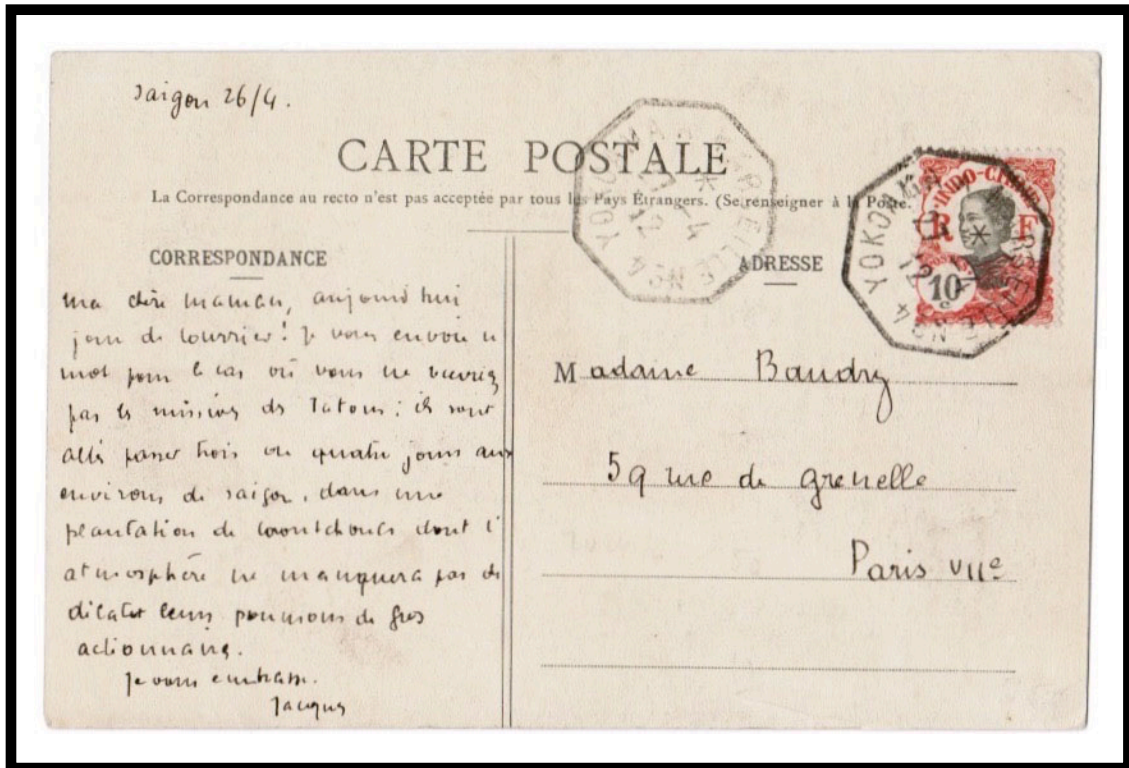
YOKOAMA A MARSEILLE N° 4

The type 2.024, number 4 postmark device was lost when the *Ville de La Ciotat* was torpedoed in the Mediterranean Sea on 24 December 1915.

Here a picture postcard franked with a 10-centime Native Woman stamp and addressed to Paris was postmarked aboard the *Polynésien* on the day she departed Saigon on 27 April 1912, continuing the return leg of her cruise.



POSTMARK TYPE: 2.024/4
PERIOD OF USE: 1911-15



POSTAL MARKINGS
YOKOAMA A MARSEILLE N° 4 27-4 12

MARSEILLE A YOKOHAMA
N° 4

After all post office materials including the postmarking devices were lost with the sinking of the *Ville de la Ciotat*, replacement devices changed the spelling of the name of the terminus city from "YOKOAMA" to "YOKOHAMA".

Here the replacement postmark was used on the *Angkor* marking a postcard showing an encampment near Port Said addressed to France.



POSTMARK TYPE: 2.025/4
PERIOD OF USE: 1916-32



POSTAL MARKINGS
MARSEILLE A YOKOHAMA N° 4 2-1 23

YOKOHAMA A MARSEILLE
N° 4

The original number 4 postmarks were lost when the *Ville de la Ciotat* was torpedoed in the Mediterranean Sea on 24 December 1915. In a format departure, the replacement cancelers, that were put into service in 1916 carried "N° 4" at the base of the postmark.

This postcard showing the Justice Building in Saigon was mailed aboard the *D'Artagnan* on the day she departed Indochina on her return to Europe, 22 March 1926.



POSTMARK TYPE: 2.026/4
PERIOD OF USE: 1916-32



POSTAL MARKINGS
YOKOHAMA A MARSEILLE N° 4 22-3 26
TORTENAY SUR LOIRE LOIRE 17-4 26

YOKOHAMA A MARSEILLE
N° 4

A magazine wrapper that originated with a member of the French Chamber of Commerce in Tokyo, was posted on the day that the *Angkor* departed Yokohama beginning the return leg of her Far East voyage.



POSTMARK TYPE: 2.026/4
PERIOD OF USE: 1916-32



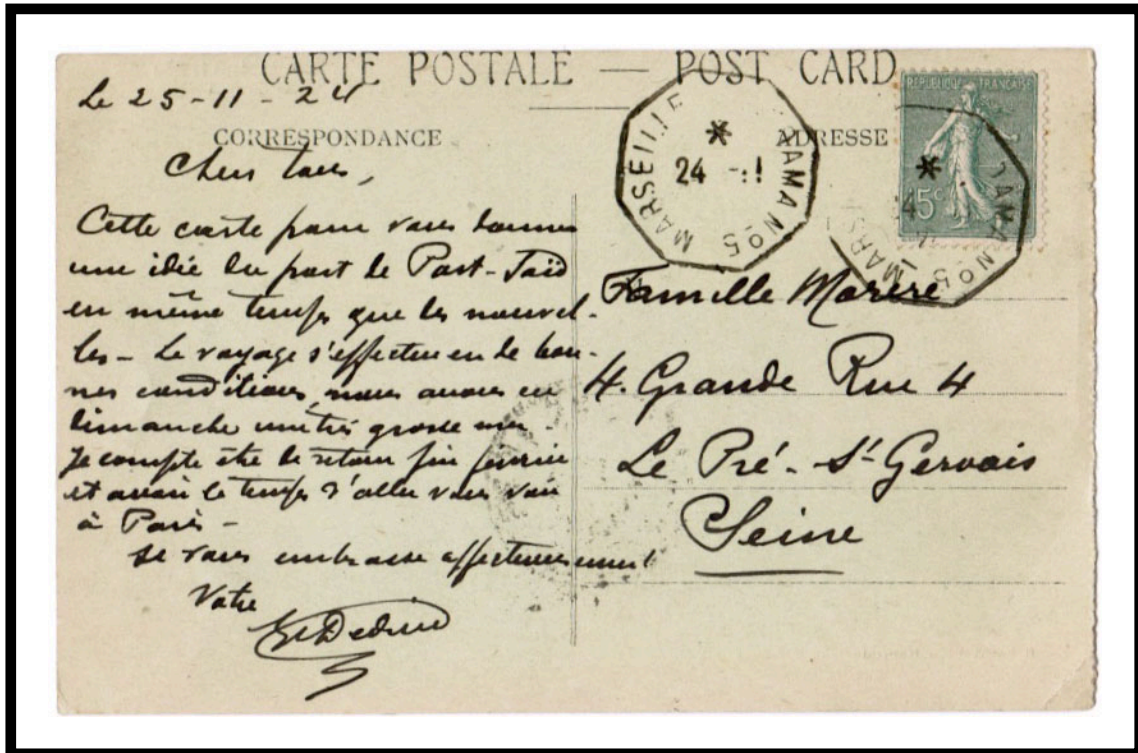
POSTAL MARKINGS
YOKOHAMA A MARSEILLE N° 4 8-8 24

MARSEILLE A YOKOHAMA N° 5

A picture postcard showing ships in near the docks of Port Said was mailed on the *André Lebon* during the outbound leg of her Far East voyage. At one of the ship's stops, the card would have been removed to await an eastward bound ship that could take the card to France.



POSTMARK TYPE: 2.023/5
PERIOD OF USE: 1911-32



POSTAL MARKINGS

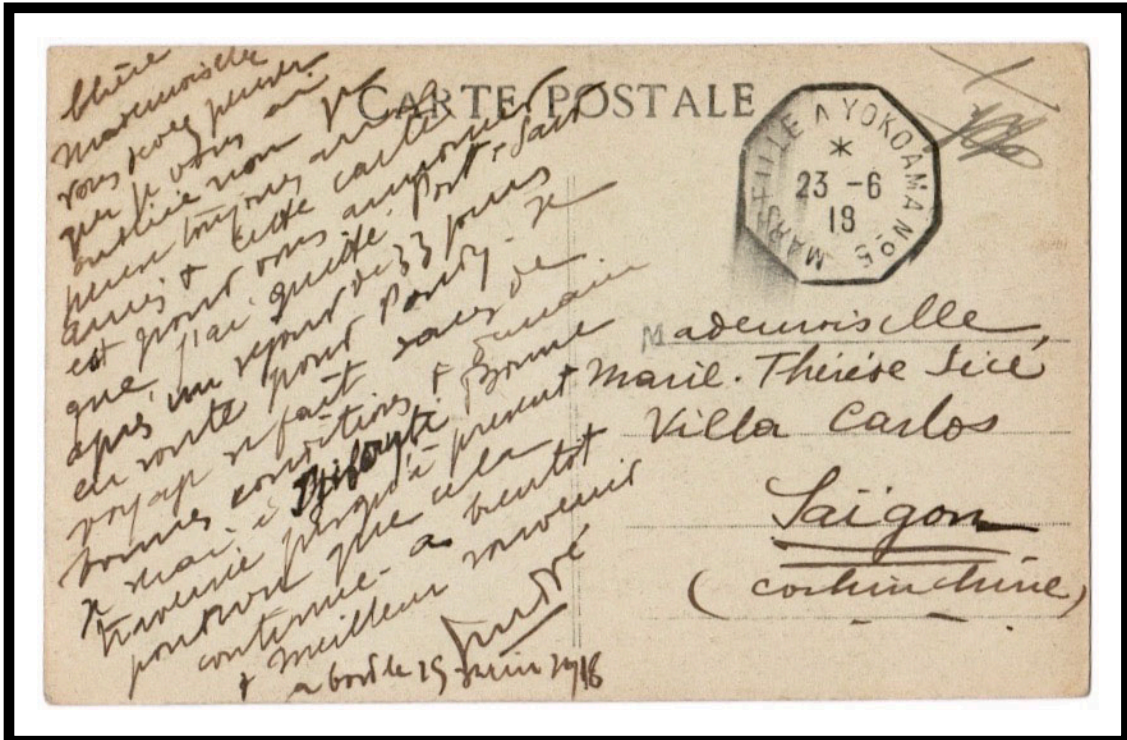
MARSEILLE A YOKOHAMA N° 5 24-11 24

MARSEILLE A YOKOAMA N° 5

Wartime disruptions played havoc with the regular ship schedules throughout 1918. This postcard showing the *Porthos* was posted on the outbound leg from France (Marseille-to-Yokohama) to an addressee in Saigon. During this time, many voyages only went as far as Saigon rather than Yokohama. Departing Marseille on 23 June, the *Porthos* could not reach the normal stops getting only as far as Saigon before returning to France in October 1918.



POSTMARK TYPE: 2.023/5
 PERIOD OF USE: 1911-32



POSTAL MARKINGS

MARSEILLE A YOKOAMA N° 5 23-6 18

YOKOAMA A MARSEILLE N° 5

The sender posted his picture postcard depicting a street scene in Colombo, Ceylon aboard the *Angers* on her return to France. The ship arrived at Marseilles on 27 September 1930.



POSTMARK TYPE: 2.024/5
PERIOD OF USE: 1911-32



POSTAL MARKINGS
YOKOAMA A MARSEILLE N° 5 9-9 30

YOKOAMA A MARSEILLE N° 5

The number 5 postmark was prepared in the octagonal format. It is curious that for all the original octagonal devices of 1911, the spelling of "YOKOAMA" omits the "H" found in the spelling used with the circular postmarks.

This letter was postmarked aboard the *Amazone* on 10 May 1913, the day she departed Saigon. The letter was offloaded at Singapore for delivery to India via a coastal service.



POSTMARK TYPE: 2.024/5
PERIOD OF USE: 1911-32



POSTAL MARKINGS
YOKOAMA A MARSEILLE N° 5 10-5 13
REVERSE
SINGAPORE 12 MY 1913

MARSEILLE A YOKOHAMA N° 6

The number 6 postmarking devices were one of the special cases where both circular and octagonal versions were in simultaneous use. Here the circular device was used to postmark a postcard on 27 February mailed soon after the *Angkor* departed Marseilles on 21 February 1924.



POSTMARK TYPE: 2.021/6
PERIOD OF USE: 1911-32



POSTAL MARKINGS

MARSEILLE A YOKOHAMA N° 6 8-5 36

REVERSE

CHALON SUR SAONE SAONE ET LOIRE 3 VI 36

YOKOHAMA A MARSEILLE N° 6

Postal agents were able to accept and process registered mail as indicated by this letter posted on the *Athos II* during her return voyage from the Far East at the end in 1929. Sent by the French Consulate office in Colombo, Ceylon, the letter was addressed to Paris.



POSTMARK TYPE: 2.022/6
PERIOD OF USE: 1911-32

YOKOHAMA A MARSEILLE

POSTMARK TYPE: 2.034
PERIOD OF USE: 1919-32



POSTAL MARKINGS

YOKOHAMA A MARSEILLE N° 6 10-9 29
registration label and straight-line YOKOHAMA À MARSEILLE
framed R with manuscript registration number

YOKOHAMA A MARSEILLE N° 6

Posted from aboard the *Atlantique*, this postcard was addressed to Bentre, Cochinchina. The *Atlantique* had departed Saigon on 24 April 1914. Postmarked a week later on 1 May 1914, the postcard was required to be transferred at Ceylon to an eastbound ship. Arriving at its destination on 13 May 1914, the card was in transit for a total of two weeks.

This example of a number 6 postmark spells out the name of the month rather than the usual numerical designation – a rare occurrence on Marseille-Yokohama Line.



POSTMARK TYPE: 2.022/6
 PERIOD OF USE: 1911-32



POSTAL MARKINGS

YOKOHAMA A MARSEILLE N° 6 1 MAI 14
 BENTRE COCHINCHINE 13-5 14

MARSEILLE A YOKOAMA N° 6

It is curious that the number 6 circular postmarks used the “YOKOHAMA” spelling whereas the octagonal versions used the “YOKOAMA” spelling. This letter was mailed on the *Paul Lecat* during the westward leg of her trip to the Orient.



POSTMARK TYPE: 2.023/6
PERIOD OF USE: 1911-32



POSTAL MARKINGS

MARSEILLE A YOKOAMA N° 6 3-8 24

REVERSE

SARLIAC s/ L'ISLES DORDOGNE 26-8 24

MARSEILLE A YOKOAMA N° 6

Here an outbound letter, postmarked on the *Angers* on 17 March 1930, was also handstamped with the straight-line route identifier normally reserved for registered letters.



POSTMARK TYPE: 2.023/6
PERIOD OF USE: 1911-32

MARSEILLE À YOKOHAMA

POSTMARK TYPE: 2.033
PERIOD OF USE: 1919-32



POSTAL MARKINGS

MARSEILLE A YOKOAMA N° 6 17-3 30
straight-line "YOKOHAMA À MARSEILLE"

YOKOAMA A MARSEILLE N° 6

A picture postcard showing the Imperial Palace in Peking was mailed aboard the *Sydney* on her return trip to Europe in late 1912. In conformance with postal rates in affect since May 1910, a 10-centime Sower stamp paid the internal postcard rate for the mailing.



POSTMARK TYPE: 2.024/6
PERIOD OF USE: 1911-32



POSTAL MARKINGS

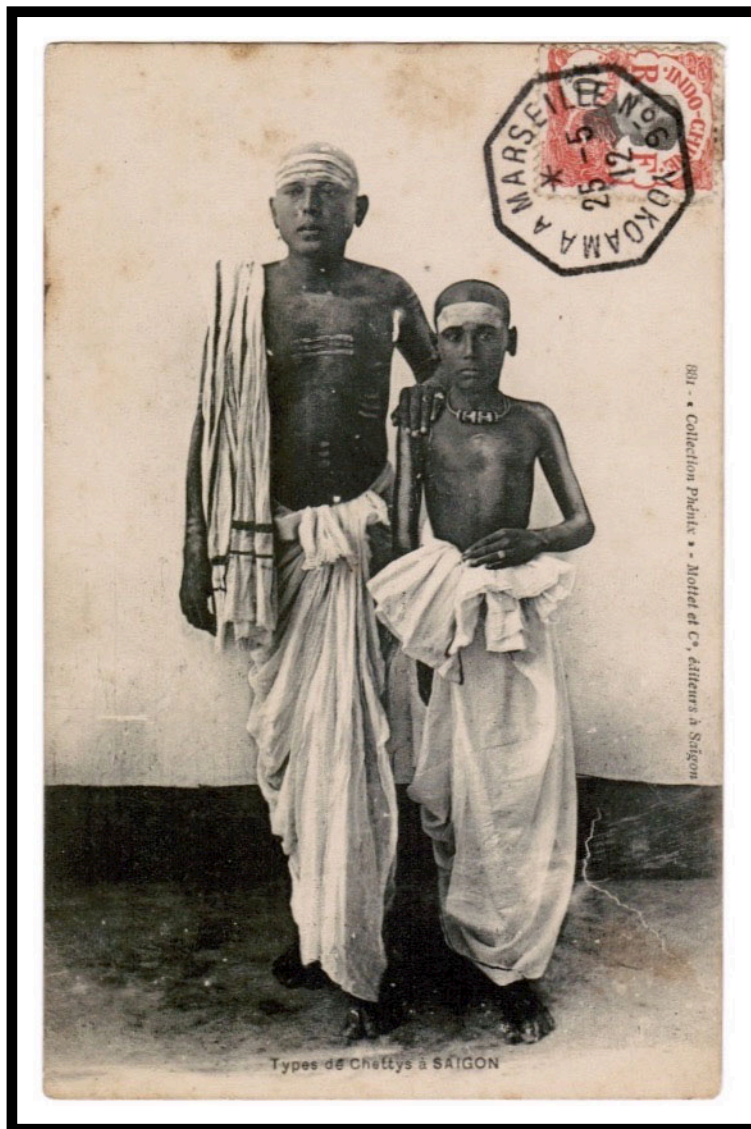
YOKOAMA A MARSEILLE N° 6 4-10 12

YOKOAMA A MARSEILLE N° 6

The number 6 postmark was applied aboard the *Yarra*, which had departed Saigon on 24 April 1912 for her return trip to France. She arrived at Marseilles on 19 June 1912.



POSTMARK TYPE: 2.024/6
PERIOD OF USE: 1911-32



POSTAL MARKINGS

YOKOAMA A MARSEILLE N° 6 25-5 12

REVERSE

YOKOAMA A MARSEILLE N° 6 25-5 12

MARSEILLE A YOKOAMA N° 7

Several varieties of number "7" postmarks served the Marseille-Yokohama Line. The earliest was the type 2.023 style. This example is from the first year of use. It was applied to the picture postcard on board the *Sydney* a few days after departing Marseilles on 17 December 1911.



POSTMARK TYPE: 2.023/7
PERIOD OF USE: 1911-18



POSTAL MARKINGS
MARSEILLE A YOKOAMA N° 7 21-12 11

YOKOAMA A MARSEILLE N° 7
First Voyage

Put into service in 1911, this example of type 2.024/7 is from the first voyage that used the number 7 postmark. This picture postcard shows the dining room on the *Tonkin*. The card is datelined at Aden "le 31 Mars 1911."

The number 7 postmarking devices were lost when the *Atlantique* was torpedoed in the Mediterranean Sea on 3 May 1918.



POSTMARK TYPE:
PERIOD OF USE: 1911-18



POSTAL MARKINGS
YOKOAMA A MARSEILLE N° 7 31-3 11

YOKOAMA A MARSEILLE N° 7

Addressed to Vinh-Yen, Tonkin, this postcard was mailed on the *Paul Lecat* a few days after she had left Saigon on 8 May. Likely at Singapore, the card was moved ashore to await the arrival of a ship heading west.



POSTMARK TYPE: 2.024/7
PERIOD OF USE: 1911-18



POSTAL MARKINGS

YOKOAMA A MARSEILLE N° 7 8-12 34
T in triangle with manuscript due amount

MARSEILLE A YOKOHAMA
N° 7

The original postmarking devices were lost when the *Atlantique* was torpedoed in the Mediterranean Sea on 3 May 1918. Replacement devices changed the name of the terminus city from "YOKOAMA" to "YOKOHAMA." In this case, the postmark was applied on the *Porthos* a few days before the ship had left Marseilles on cruise on 23 April 1925.



POSTMARK TYPE: 2.025/7
PERIOD OF USE: 1918-26



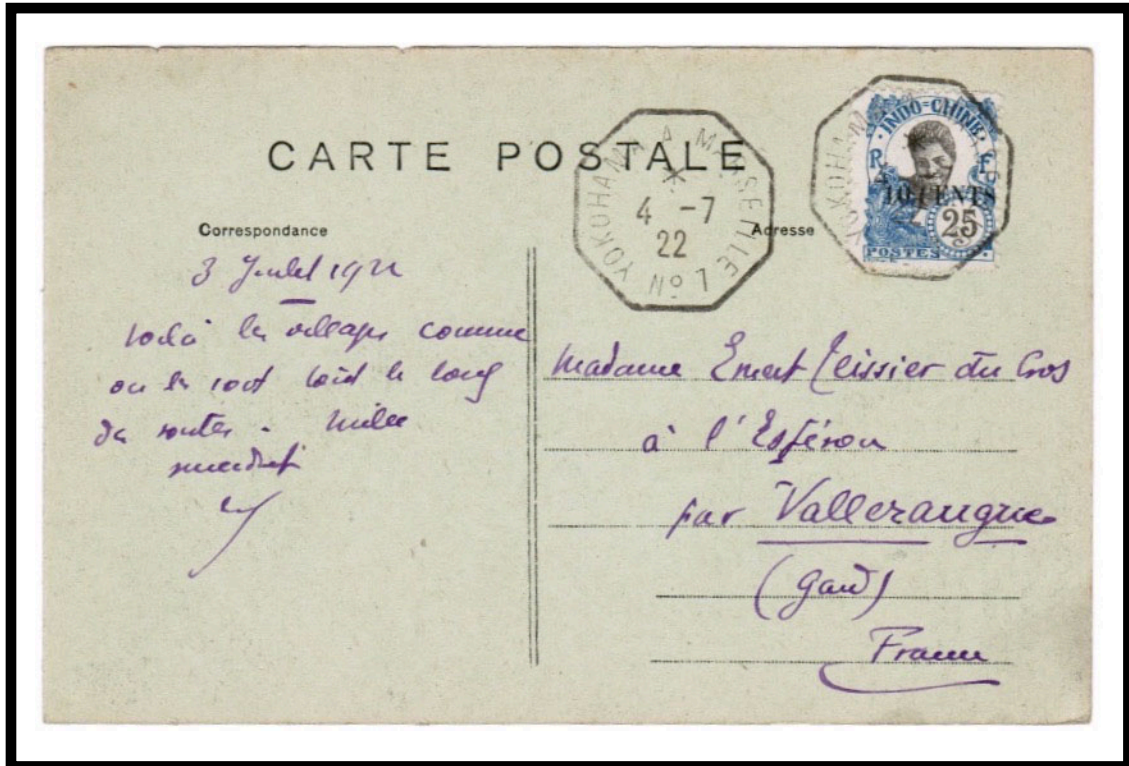
POSTAL MARKINGS
MARSEILLE A YOKOHAMA N° 7 29-4 25
REVERSE
MARSEILLAN HERAULT 7-5 25

YOKOHAMA A MARSEILLE N° 7

The canceller with the number "7" at its base was introduced after the original device was lost when the *Atlantique* was torpedoed and sunk on 3 May 1918. Franked with a 10-cent Overprinted Native Woman stamp, this picture postcard was mailed on the *Azay-Rideau* during the return leg of her voyage to the Far East in mid-1922.



POSTMARK TYPE: 2.026/7
PERIOD OF USE: 1918-26



POSTAL MARKINGS
YOKOHAMA A MARSEILLE N° 7 4-7 22

MARSEILLE A YOKOHAMA N° 7

Fire on the *Fontainebleau* on 12-13 July 1926 off Djibouti resulted in the loss of all postmarking devices. Replacement devices bear an asterisk at the base. Here the type 2.029 postmark was applied to a letter posted on the *Porthos* during the last year of Marseille-Yokohama Line postmarks.



POSTMARK TYPE: 2.029
PERIOD OF USE: 1927-32



POSTAL MARKINGS
MARSEILLE A YOKOHAMA N° 7 21-3 32
postman's routing handstamp

YOKOHAMA A MARSEILLE N° 7
First Voyage

With the loss of postmarks in the fire aboard the *Fontainebleu* near Djibouti on 12-13 July 1926, new devices were fabricated and put into service. The new format placed an asterisk in the six o'clock position at the base of the octagonal postmark. This example was from the *Athos II* on the first voyage when the postmarks were used.



POSTMARK TYPE: 2.030
PERIOD OF USE: 1927-32



POSTAL MARKINGS
YOKOHAMA A MARSEILLE N° 7 30-5 27

MARSEILLE A YOKOAMA N° 8

Circular and octagonal number 8 postmarking devices were in service at the same time. This picture postcard of a park in Shanghai was mailed on the *Paul Lecat* after she had departed Marseilles on 10 August 1913.



POSTMARK TYPE: 2.021/8
PERIOD OF USE: 1911-17



POSTAL MARKINGS

MARSEILLE A YOKOAMA N° 8 16-9 13

MARSEILLE A YOKOHAMA N° 8

A picture postcard depicting a native family was posted at Haiphong using a 5-centime Native Woman stamp. Addressed to Belgium, the card was taken aboard the *Nera* where the ship's postmark was applied as a transit marking. The card reached its destination two days after the *Nera* reached Marseilles on 20 July 1912.

All the number 8 cancellers were lost on 17 February 1917 when the *Athos* was torpedoed in the Mediterranean Sea on her return voyage to France.



POSTMARK TYPE: 2.022/8
 PERIOD OF USE: 1911-17



POSTAL MARKINGS

HAIPHONG TONKIN 11 JUN 12
 MARSEILLE A YOKOHAMA N° 8 17-6-12
 KORTRIJK COURTRAI 22 VII 1912
 4 in circle (postman's route identifier)

MARSEILLE A YOKOAMA N° 8

A picture postcard of a family council in Aden was postmarked aboard the *Ernest Simons* as she headed east during the first year of Marseille-Yokohama Line operations, 1911.

The *Ernest Simons* was lost on 3 April 1917 to a torpedo attack in the Mediterranean.



POSTMARK TYPE: 2.023/8
PERIOD OF USE: 1911-17



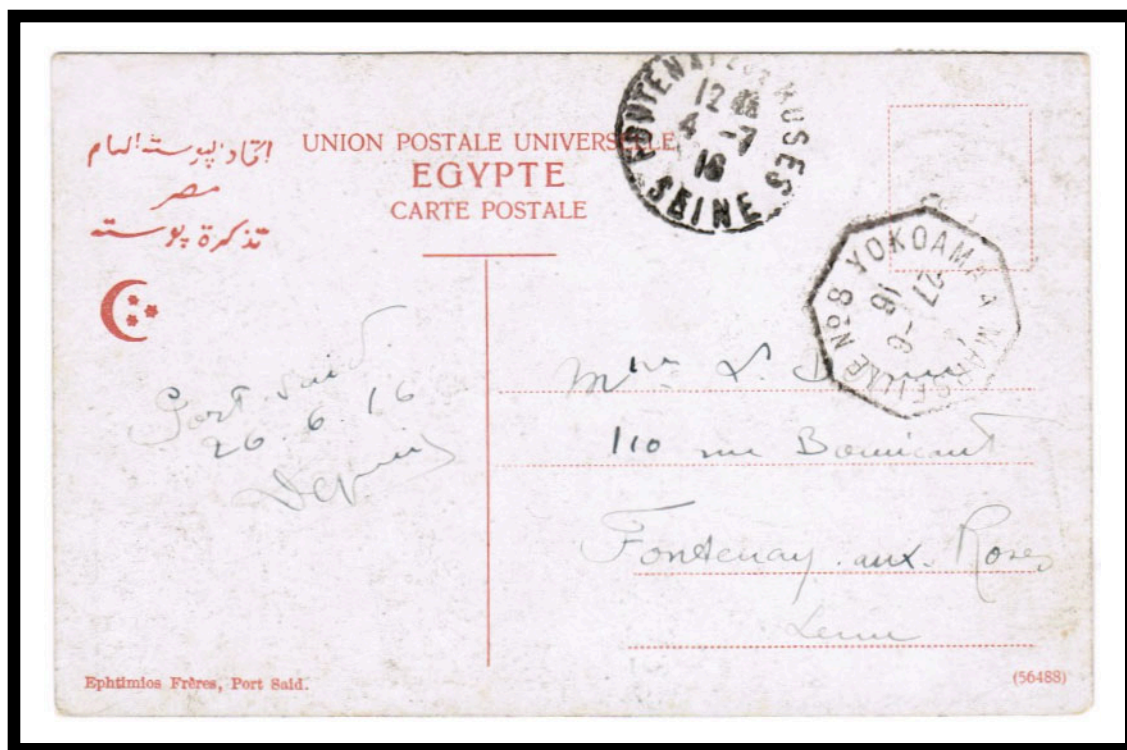
POSTAL MARKINGS
MARSEILLE A YOKOAMA N° 8 22-9 11

YOKOAMA A MARSEILLE N° 8

A picture postcard showing an Egyptian girl was posted at Port Said on 6 June 1916. Addressed to France, it was put aboard the *Porthos* returning from the Far East. She arrived at Marseilles on 3 July and the card reached its destination the next day.



POSTMARK TYPE: 2.024/8
PERIOD OF USE: 1911-17



POSTAL MARKINGS

YOKOAMA A MARSEILLE N° 8 27-6 16
FONTENAY AUX ROSES SEINE 4-7 16

REVERSE

PORT SAID 6.VI.16

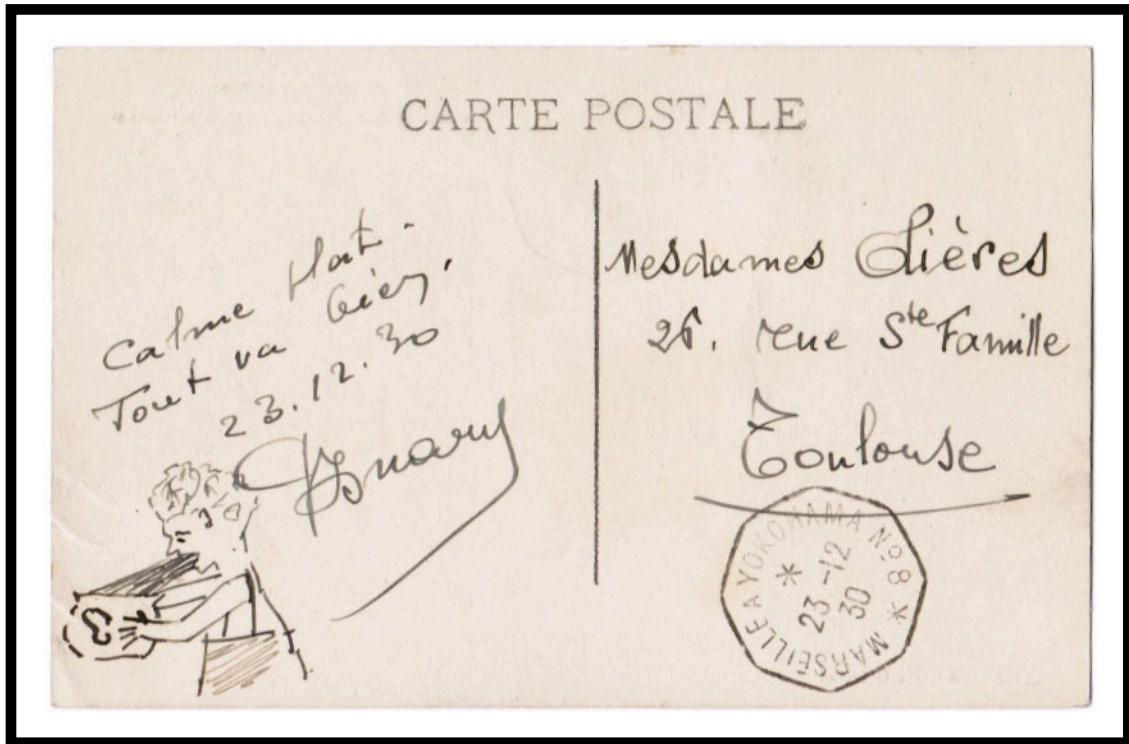
MARSEILLE A YOKOHAMA N° 8

The original number 8 postmarking devices were lost in the torpedo sinking of the *Athos* in the Mediterranean on 17 February 1917. Replacement devices corrected the spelling of "YOKOHAMA" and positioned an asterisk at the base of the octagon.

The new style postmark was applied to a postcard depicting the *Porthos* after she departed Marseilles on 18 December 1930.



POSTMARK TYPE: 2.027/8
PERIOD OF USE: 1919-32



POSTAL MARKINGS

MARSEILLE A YOKOHAMA N° 8 23-12 30

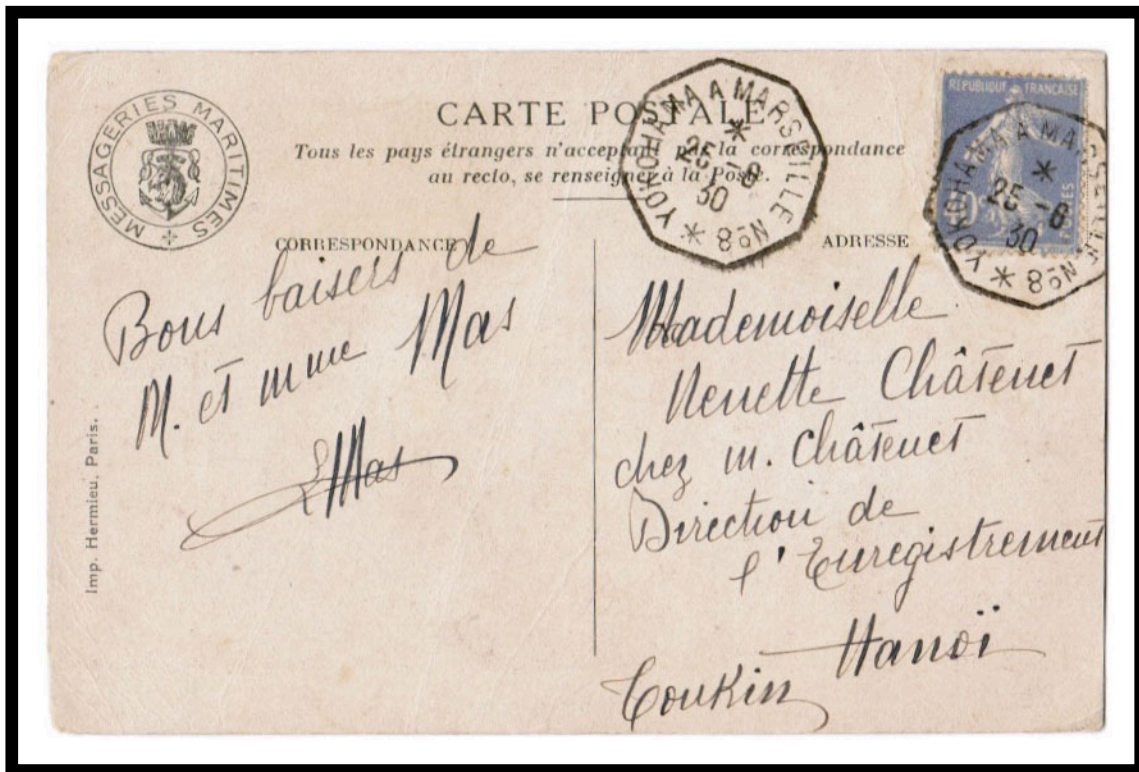
YOKOHAMA A MARSEILLE N° 8

Using a postcard supplied by Messageries Maritimes, the sender sent a best wishes message to a young lady in Hanoi, Tonkin. The card was mailed on the *Général Metzinger*, which had departed Saigon on 10 June 1930.

The *Général Metzinger* was sunk at the bombardment of Havre on 11 April 1940.



POSTMARK TYPE: 2.028/8
PERIOD OF USE: 1919-32



POSTAL MARKINGS

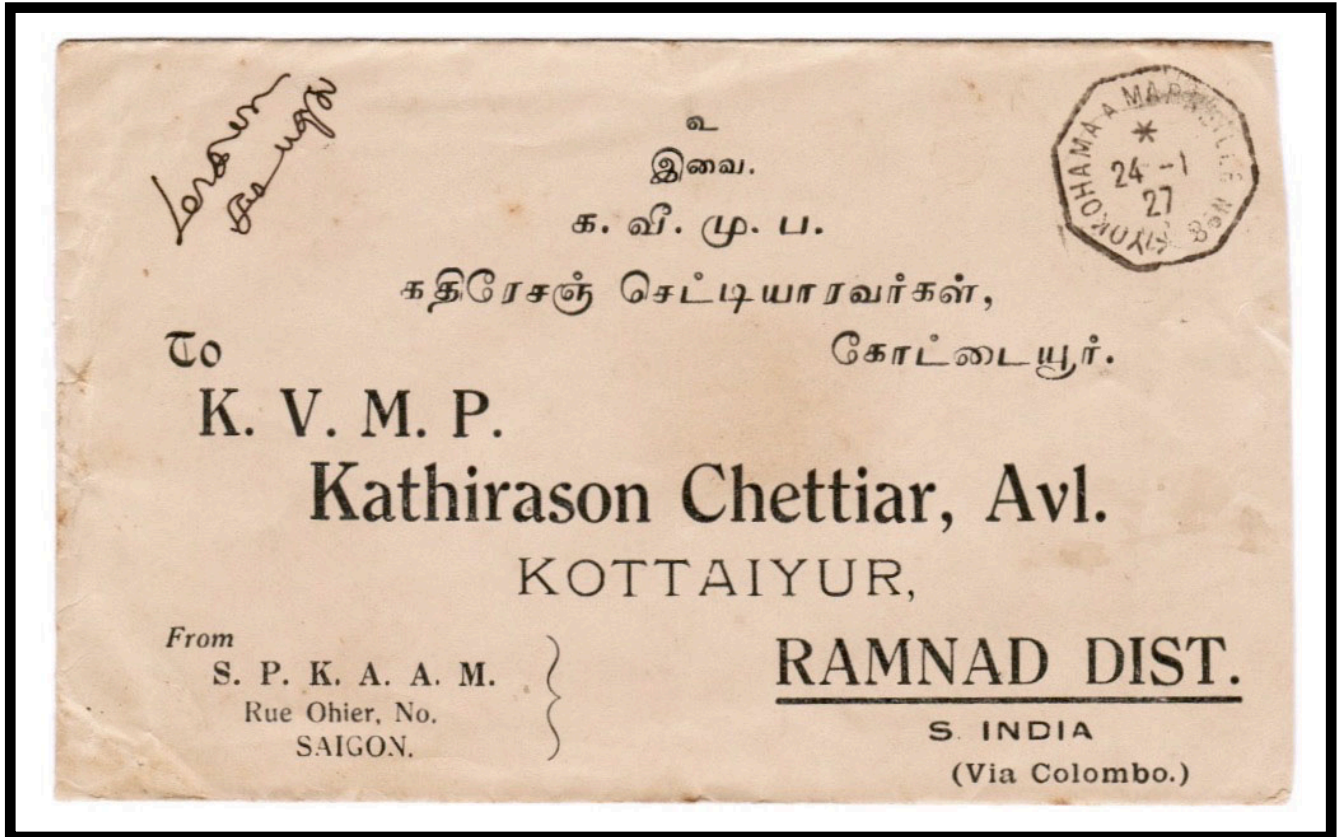
YOKOAMA A MARSEILLE N° 8 25-6 30

MARSEILLE A YOKOHAMA N° 8

Commercial correspondence addressed to South India carries imprinted routing directions "Via Colombo." This letter was posted aboard the Angers on 24 January, the day the ship departed Saigon. The mailing reached its destination a few days afterward.



POSTMARK TYPE: 2.028/8
PERIOD OF USE: 1919-32



POSTAL MARKINGS
YOKOHAMA A MARSEILLE N° 8 2-8 27
REVERSE
KOTTAIYUR 2 FEB. 27

YOKOHAMA A MARSEILLE N° 8

On this particular trip, the *Porthos* did not reach Yokohama. She only went as far as Shanghai. The letter was postmarked on Christmas Day 1928, the day the ship departed Saigon for her return trip to Europe.



POSTMARK TYPE: 2.028/8
PERIOD OF USE: 1919-32



POSTAL MARKINGS

YOKOHAMA A MARSEILLE N° 8 25-12-28

REVERSE

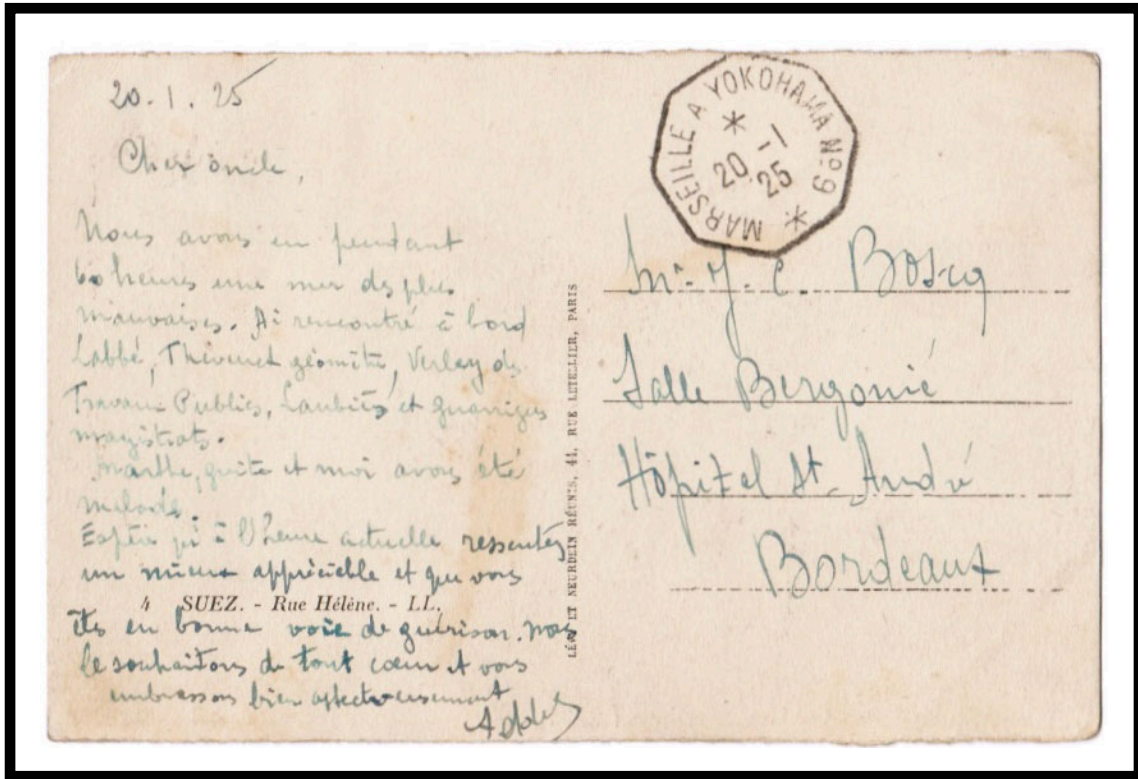
YOKOHAMA A MARSEILLE N° 8 25-12-28
KOTTAIYUR 3 JAN. 29

MARSEILLE A YOKOHAMA N° 9

The second largest numeral, sparingly used by the ships plying the Far East route in the 1930s, was "9." Here the number 9 postmark was applied to a postcard showing a street scene in Port Said aboard the *Angkor* which left Marseilles on 15 January 1925.



POSTMARK TYPE: 2.027
PERIOD OF USE: 1919-31



POSTAL MARKINGS

MARSEILLE A YOKOHAMA N° 9 20-1 25

YOKOHAMA A MARSEILLE N° 9

To accommodate a higher frequency of voyages, number “9” and “10” postmarks were introduced in 1919.

Addressed to Saigon, a picture postcard showing an oasis was posted at Port Said on 9 May. The 20-centime Sower stamp was cancelled with the number “9” postmark on 14 May 1926 as the ship proceeded toward the Far East.



POSTMARK TYPE: 2.028/9
PERIOD OF USE: 1919-31



POSTAL MARKINGS
PORT SAID 9.MA.26
YOKOHAMA A MARSEILLE N° 9 14-5 26

YOKOHAMA A MARSEILLE N° 9
First Voyage

The *Sphinx* was the first ship to put the replacement number 9 postmark into service. However, her outbound trip did not reach Yokohama. She went as far as Haiphong and started the return leg of the voyage from there. This letter was posted on board a day after the *Sphinx's* departure from Saigon on 11 July 1919.



POSTMARK TYPE: 2.028/9
PERIOD OF USE: 1919-31



POSTAL MARKINGS
MARSEILLE A YOKOHAMA N° 9 12-7 19
REVERSE
MONTESTRUC GERS 11-8 19

MARSEILLE A YOKOHAMA N° 10

Ten was the largest number employed for the YOKOHAMA A MARSEILLE maritime postmarks. In this case, the *Porthos* used the number 10 device on her Far East voyage that began on 7 October 1927. The message on the *Porthos* picture postcard indicates that the sender was “en route pour Shanghai.”



POSTMARK TYPE: 2.027/10
PERIOD OF USE: 1919-29



POSTAL MARKINGS

MARSEILLE A YOKOHAMA N° 10 2-11 27

MARSEILLE A YOKOHAMA N° 10

Aboard the *Cordillère*, this mailing was postmarked on 29 February 1924, the day the ship departed Saigon. Not often used, the number 10 postmarks were retired in 1929, a few years earlier than the others in the series.



POSTMARK TYPE: 2.028/10
PERIOD OF USE: 1919-29



POSTAL MARKINGS
MARSEILLE A YOKOHAMA N° 10 29-2 24
REVERSE
COLUMBO 8 MAR 24

Bogus YOKOHAMA MARSEILLE Postmark

The first piece of evidence against this marking is the fact that an airmail letter from Saigon to India in 1936, when airmail routes were well established, would not have had a maritime transit marking. The second piece of evidence rests on the fact that, at the end of 1933, the eastern terminus of the N line became Kobe, Japan. Octagonal datestamps of the 1934-1940 period read "KOBE A MARSEILLE." Further supporting evidence comes from the fact that the handstamp ties the 50-cent stamp to the cover. Except for letters mailed on board ship, these handstamps were always applied on a portion of the envelope well away from the postage. This handstamp has no date, which would have been almost a necessary feature for a transit marking. Perhaps most damning is the word in the center, "PAOBOT," which is a terrible misspelling of the French word "PAQUEBOT". The latter is the origin of "packet boat," the English expression for a mail steamer.



POSTAL MARKINGS

SAIGON-CENTRAL COCHINCHINE 3-2 36
registration label

T in circle

YOKOHAMA MARSEILLE No.2 (bogus)

REVERSE

CALCUTTA-G.P.O. REG. 10 FEB.36
OYAKONDAN-SIRUVAYAL 13 FEB 36