

## Native Scenes

In 1927, the long-lived Native Women series was replaced by a new definitive issue. The new stamps portrayed various cultural, geographical and historical aspects of Indochina.

### FARMER PLOWING AT TOWER OF CONFUCIUS



## Native Scenes

Following the precedent of preceding issues, the lower values of the Native Scenes set were printed in two small-size formats. Also consistent with past practice, the higher values employed larger formats.

### BAY OF ALONG



## Native Scenes

### ANGKOR RUINS



### WOOD CARVER



### THAT LUANG TEMPLE

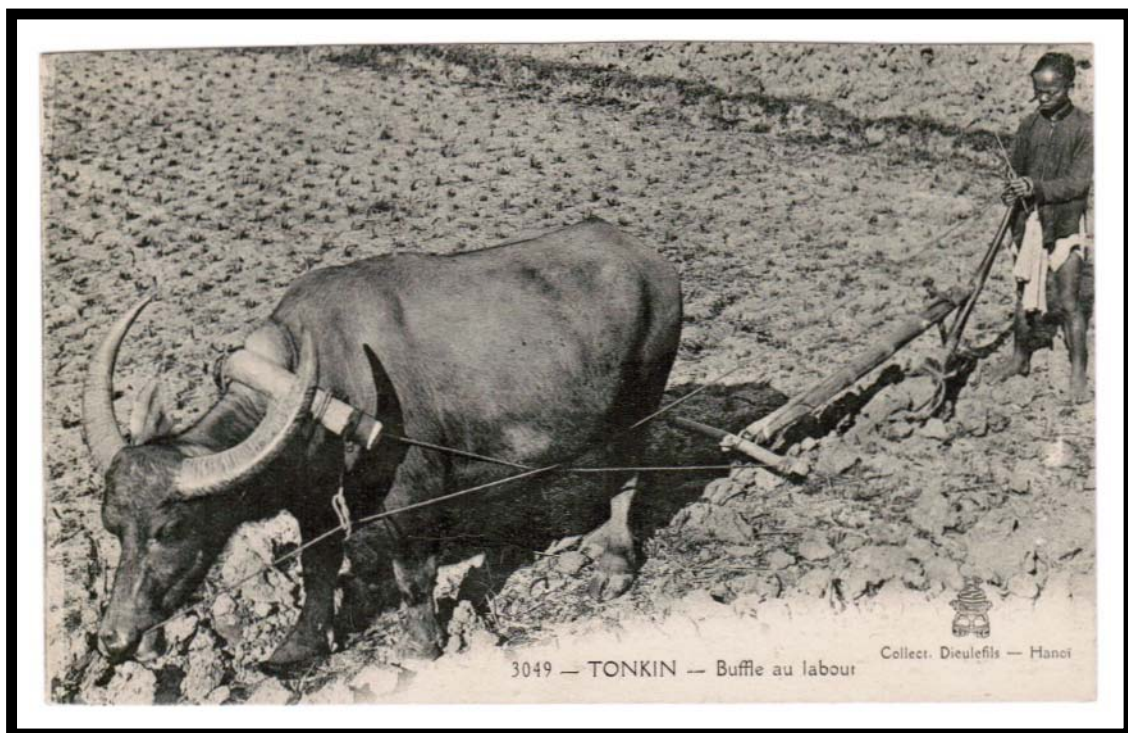


### FOUNDING OF SAIGON



## Native Scenes Farmer Plowing at Tower of Confucius

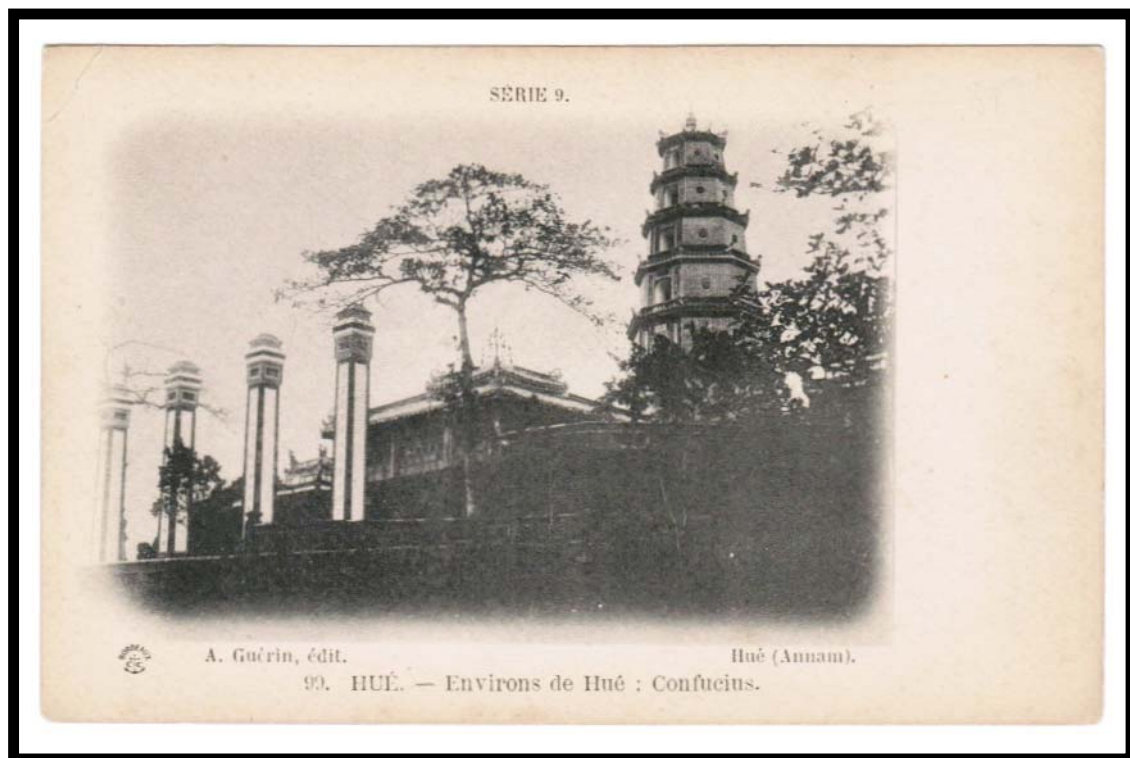
The lowest values of the Native Scenes stamps depict a farmer plowing with a water buffalo. Within Indochina, this method of farming was a common sight. It was the only practical method for the poor to till the land.



## Native Scenes

### Farmer Plowing at Tower of Confucius

In the background of the lowest values is the Tower of Confucius. Although the majority of temples in Indochina were Buddhist temples, Confucian temples played an important role in training for the civil service.

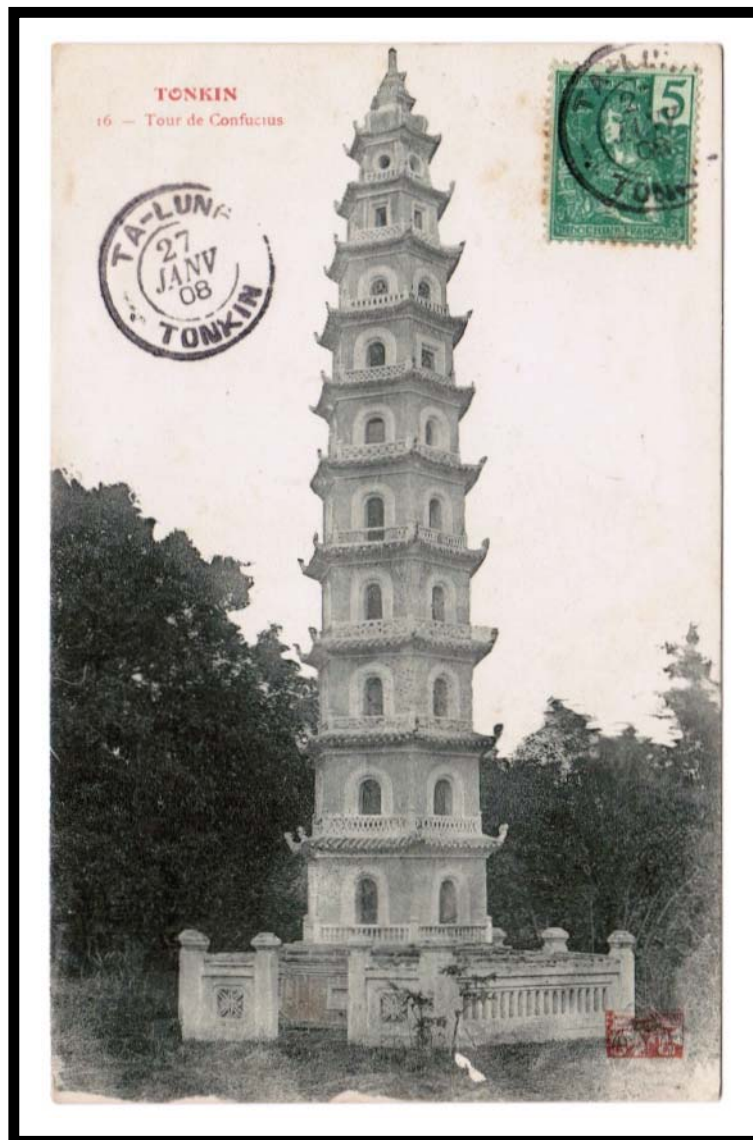




## Native Scenes

### Farmer Plowing at Tower of Confucius

There was more than one Tower of Confucius in Indochina. It is uncertain whether the Native Scenes definitive stamps honored one specific temple.



## Native Scenes Farmer Plowing

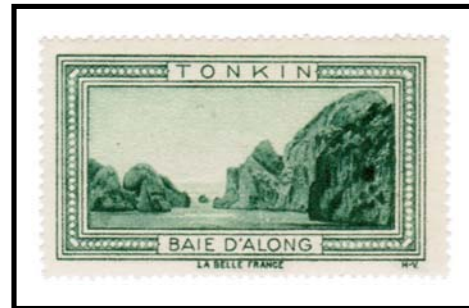
With its 5 cent stamp, this picture postcard combination approaches a maximum card. The central aspect of both the stamp and postcard image is a farmer using water buffalo for plowing a field.



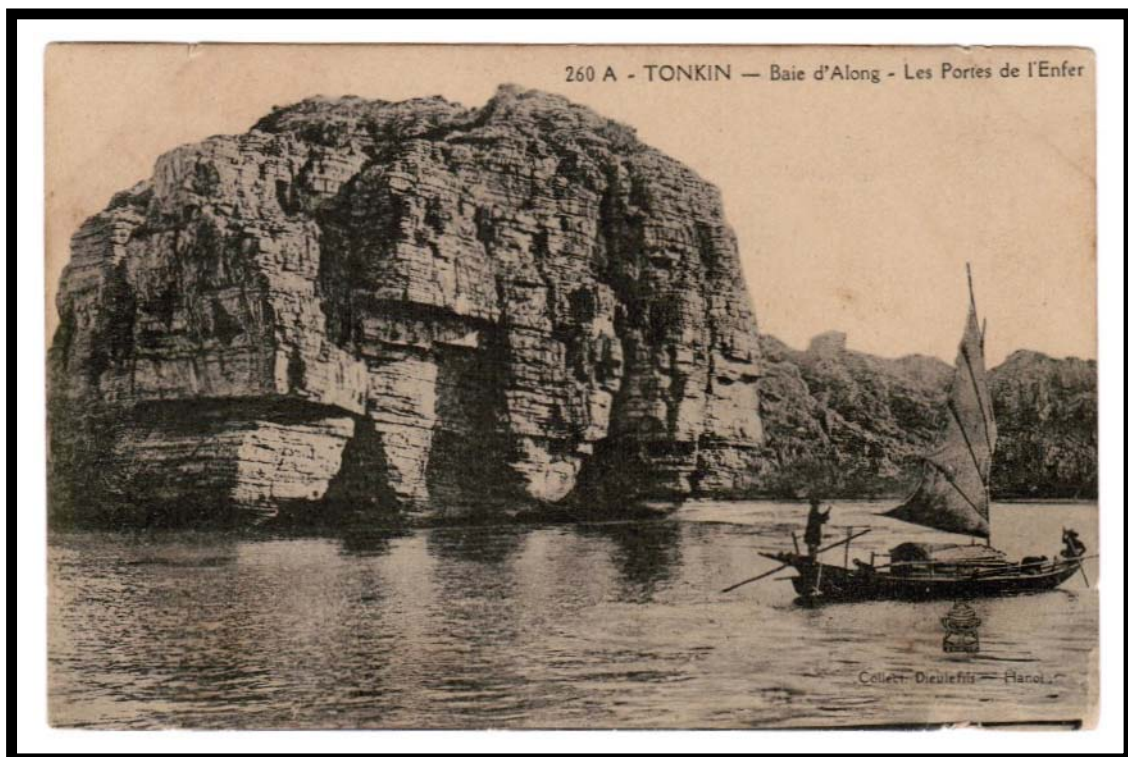
POSTAL MARKINGS  
TANAN COCHINCHINE 5-11 28

## Native Scenes Bay of Along

The central portion of the middle value stamps pictures a boat among rocky islets in the Bay of Along. Located near the port city of Haiphong, the bay is notable for the scenic cliffs on the many small islands.



TOURISM LABEL





## Native Scenes Angkor Ruins

Built in the twelfth century, Angkor Wat was the largest and best preserved temple in the Angkor complex. After its discovery in the jungle in the nineteenth century, it became a major cultural attraction.



TOURISM LABEL



POSTAL MARKINGS

QUANG-YEN TONKIN 16 DEC 10

## Native Scenes Woodcarver

The 25 and 30 cent denominations of the Native Scenes definitive series feature a woodcarver as the central design element. Indochina has had a long tradition of craftsmanship excellence in this area.



POSTCARD DEPICTS ANNAMITE WOODCARVERS' WORKSHOP.

## Native Scenes Thât Luang

A “thât” is a building that is constructed over a relic of Buddha or a highly respected abbot. More precisely, it is a mound constructed from earth and stone with a spire or umbrella on top containing the chamber for a Buddhist relic, thus making it a memorial shrine.

King Setthathirat I built Thât Luang in 1566. Thât Luang is the most sacred Buddhist monument in Laos and annually, it is the focus for the country's most important religious festival.



TOURISM LABEL



POSTAL MARKINGS

SAIGON A COCHINCHINE 18 AOUT 11



## Native Scenes Low Value Essays

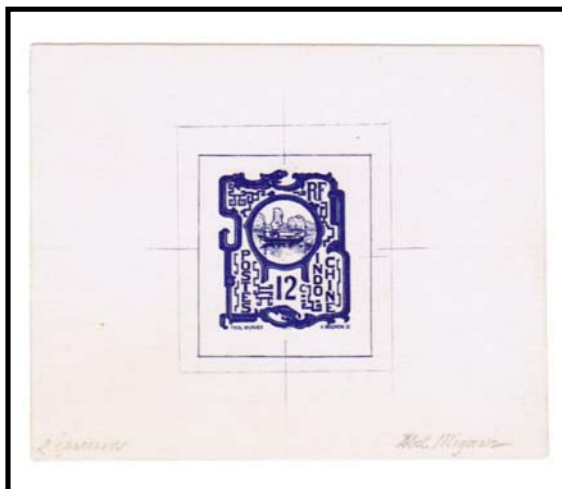
Essays were prepared as various steps in the printing process to ensure that the stamps fulfilled expectations. These essays differ in the denomination portion of each design.



ENGRAVER'S ESSAY



PRINTER'S ESSAY



ENGRAVER'S ESSAY



PRINTER'S ESSAY



Native Scenes  
Angkor Essays



PRINTER'S ESSAY WITHOUT DENOMINATION



PRINTER'S ESSAY OF 15 CENTS



ENGRAVER'S ESSAY  
15 CENTS

Native Scenes  
Angkor Essays



PRINTER'S ESSAY OF 20 CENTS

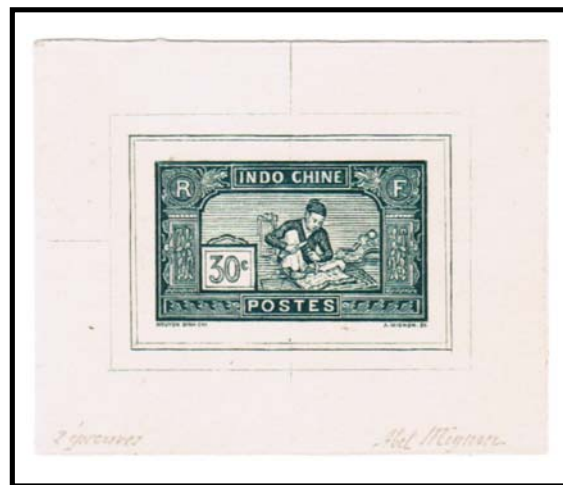


PRINTING MISREGISTRATION OF 20 CENTS

Native Scenes  
Wood Carver and That Luang Essays



PRINTER'S ESSAY



ENGRAVER'S ESSAY

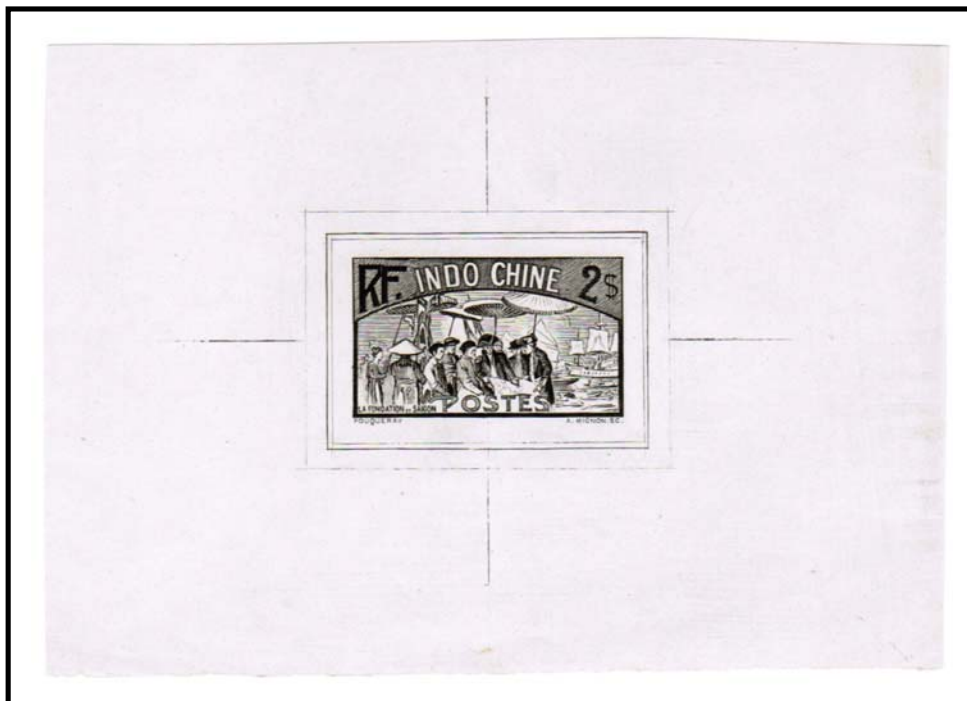


PRINTER'S ESSAY

Native Scenes  
High Value Essays



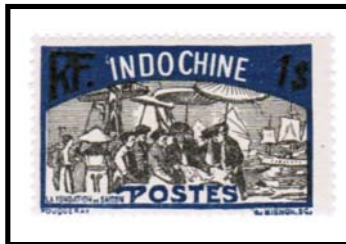
ENGRAVER'S ESSAY



ENGRAVER'S ESSAY



Native Scenes  
High Value Varieties



MISSING YELLOW ERROR



ESSAY SHOWING COLORS OF 1 PIASTER  
LACKING DENOMINATION



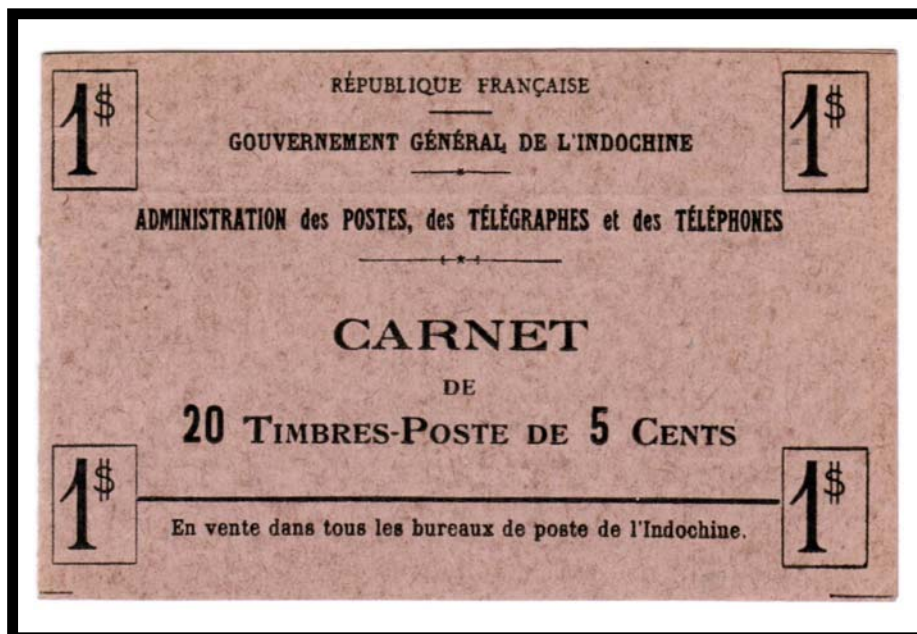
IMPERFORATE

Native Scenes  
High Value Essay



## Native Scenes 5-cent Booklet

In addition to regular panes, the 5 cent and 6 cent values were also sold in booklet form. For the booklets, the stamps were arranged in two panes of ten stamps. Marginal inscriptions in the selvedge promoted the post office.



## Native Scenes 5-cent Booklet Pane Variety

This pane from the 5-cent booklet was printed correctly and perforated properly. However, when the pane was positioned incorrectly cut when it was cut from the printed sheet. As a result, the selvedge elements along the margins vary considerably in shape and size





## Native Scenes 6-cent Booklet

The post office took advantage of the covers on the booklets by presenting rate information for letters, packages and telegraph services.



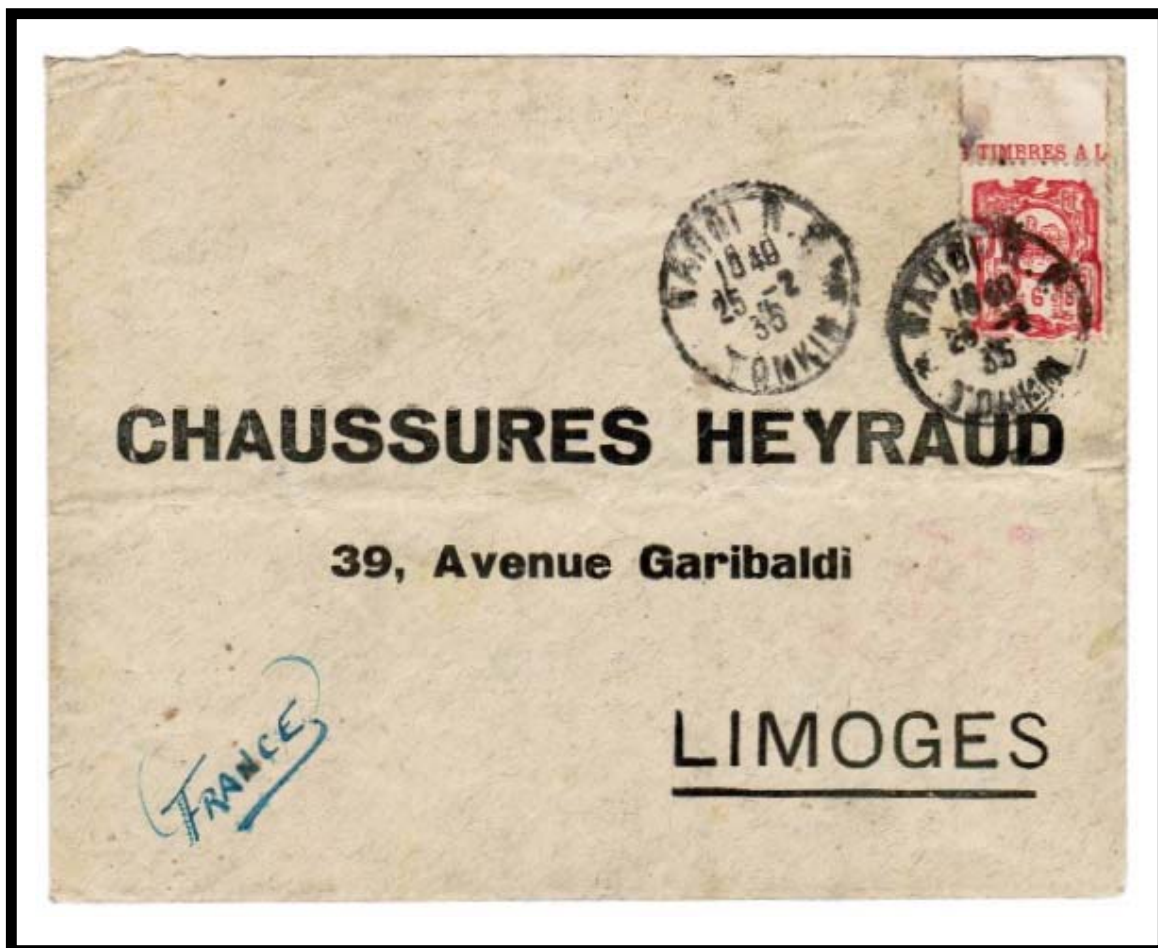
COLIS POSTAUX						
Tarifs (1)						
	4 KGR.	3 KGR.	5 KGR.	10 KGR.	DROIT D'ASSURANCE	CONTRE REMB. EXPRES
INDOCHINE (2) . . .		0 \$ 30 à 1 \$ 10	0 \$ 40 à 1 \$ 60	0 \$ 65 à 2 \$ 35	0 \$ 01 par 5 \$ de valeur déclarée	Admis
FRANCE . . . . .	2 fr 35		3 fr 75	6 fr 55	0 fr 20 par 300 fr.-or de valeur déclarée	-d-
ALGÉRIE & CORSE . .	2 fr 75		4 fr 40	7 fr 75	0 fr 30 par 300 fr.-or de valeur déclarée	-d-

*Pour les autres pays, se renseigner à la poste*

(1) Les taxes des colis à destination de la France, de l'Algérie, de la Corse sont indiquées en francs-or.  
 (2) Tarif variable suivant la catégorie des bureaux d'origine et de destination.

Native Scenes  
Use from 6-cent Booklet

When the selvedge is intact, the wording in the top and bottom margins can immediately identify stamps that originated from booklets.



POSTAL MARKINGS  
HANOI R.P. TONKIN 25-2 36

## Native Scenes Millesimes



## Native Scenes Millesimes





## Native Scenes Millesimes



## Native Scenes Millesimes



## Native Scenes Millesimes



Native Scenes  
Use of 1-cent Millesime

An unsealed mailing at the calling card postage rate only required 2 cents postage in 1929. In this case, the postage was paid with a pair of 1-cent Native Scenes stamps with the millesime "7" in the central gutter separating the two stamps.

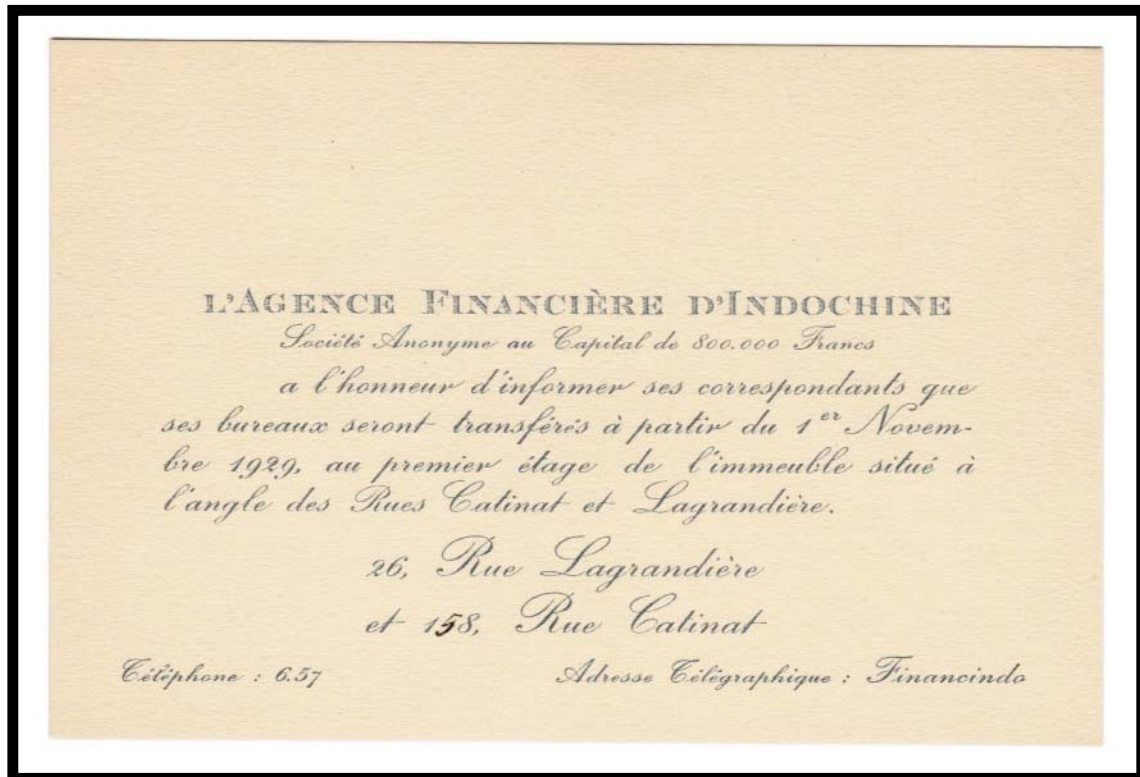


POSTAL MARKINGS  
SAIGON-CENTRAL COCHINCHINE 21-10 29



Native Scenes  
Use of 1-cent Millesime  
Enclosure

The enclosure to the unsealed 1929 envelope was an announcement that a financial company was changing the location of its office.



Native Scenes  
Use of Millesimes

Two millesime pairs, both from 1927 printings, contributed to the postage on a 1937 mailing to French India.



POSTAL MARKINGS  
SAIGON-CENTRAL COCHINCHINE 28-5 37  
REVERSE  
CALCUTTA G.P.O. D.B.N. 30 MAY 37

# Native Scenes Perfins



BI

Banque de l'indochine (Saigon Branch)



BC

Banque de l'indochine (Hanoi Branch)

## Native Scenes Perfins



L.J.C.

L. J. Chaffanjon



G.M.R.

Grand Magasins Reunis



H.S.  
B.C.

Hong Kong and Shanghai Banking Corporation



Native Scenes  
Use of BIC Perfin

The Hanoi branch of the Bank of Indochina utilized the "BIC" perfin as demonstrated by the 40 cent and 50 cent stamps on this airmail cover to the Paris branch of the bank.

BIC



POSTAL MARKINGS

HANOI R. P. TONKIN 22-6 31

airmail label

black "X" handstamp

REVERSE

SAIGON-CENTRAL COCHINCHINE 25-6 31

Native Scenes  
Use of HS/BC Perfin

The 1 piaster value from the Native Scenes series was perforated twice with "HS" over "BC", which stood for Hong Kong and Shanghai Banking Corporation. The letter was addressed to the bank's branch office in Zurich, Switzerland.

HS  
BC



POSTAL MARKINGS

SAIGON-CENTRAL COCHINCHINE 20-5 32

"Saigon-Marseille" route handstamp  
airmail label with black "X" handstamp

REVERSE

SAIGON-CENTRAL COCHINCHINE 20-5 32

MARSEILLE-GARE-AVION B<sup>CHES</sup> DU RHONE 29 • V 1932

Native Scenes  
Use of HS/BC Perfin

The high-value of the Native Scenes definitive series perforated with the HS/BC initials was affixed to a letter posted from Saigon to London in 1933.

HS  
BC



POSTAL MARKINGS  
SAIGON-CENTRAL COCHINCHINE 9-9 33  
REVERSE  
SAIGON-CENTRAL COCHINCHINE 9-9 33



## Native Scenes Use of LJC Perfin

Each of the four stamps on this 1931 mailing to Paris has been perforated with the initials "LJC." The meaning of the letters was recently found to stand for "L. J. Chaffanjon," proprietor of the store "Magasins Chaffanjon" located in Haiphong.

LJC



### POSTAL MARKINGS

HAI-PHONG TONKIN 29-931  
airmail and expedited service labels

### REVERSE

SAIGON-CENTRAL COCHINCHINE 1-10 31  
MARSEILLE-GARE-AVION BCHES DU RHONE 12 • X 1931